

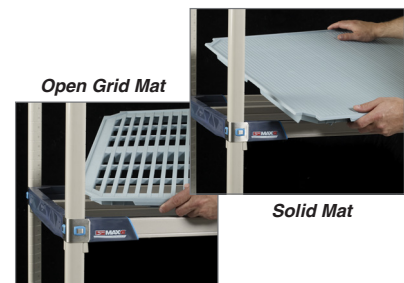
{9.20}



MetroMax® i Polymer Shelving

All polymer corrosion-proof shelving constructed of advanced polymers and Type 304 stainless corners. Open grid or solid shelf mats easily lift off the shelf frames. Shelves and polymer posts offer a lifetime warranty against rust and corrosion. Shelf mats have built-in Microban® antimicrobial product protection. Shelf has a rigid four-sided frame with center truss. Robust corner provides complete 360° capture of the wedge and post for added stability. Stationary units have maximum capacity of 2,000 lbs. (907kg) evenly distributed. Mobile units (with stem casters) offer a maximum total unit load of 900 lbs. (408kg). Units assemble easily — shelves mount on four one-piece wedges along numbered, grooved posts and adjust on 1" (25mm) increments.

- **Rust & Corrosion-Proof:** All-polymer and Type 304 stainless design withstands moisture, chemicals, and harsh environments.
- **Forever Guarantee:** Lifetime warranty against rust and corrosion.
- **Maximum Strength:** Proven corner connection and rigid four-sided frame with center truss assure stability and strength in stationary, mobile, and high-density track shelving configurations.
1000 lbs. (454kg) per shelf for lengths of 24" to 48" (610 to 1219mm)
750 lbs. (340kg) per shelf for lengths of 54" (1372mm) or longer
Stationary unit: 2000lbs (907kg) evenly distributed.
Mobile unit (with stem casters): Up to 900lbs. (408kg).
Multiply the caster load rating by 3 to determine actual rating.
- **Easiest to Clean:** Smooth surfaces easily wipe clean. Polymer mats can be easily removed and cleaned in a sink or commercial washer/dish machine.
- **Microban® Antimicrobial Product Protection** is built into the shelf mats to help fight the growth of stain and odor-causing bacteria, fungi, mold, and mildew to keep product cleaner between cleanings.
- **Smooth, Protective Surfaces:** Smooth, flat surfaces protect packaged shelf contents from unwanted rips, tears, or damage.
- **Efficient Use of Space:** Shelves adjust on 1" (25mm) increments along the post to maximize the use of available vertical space.
- **Fast, Easy Assembly:** Shelves are ready to use right out of the box. One-piece wedges securely attach to the posts — Raised beads on the back of each wedge snap into the grooves on the post. Window on wedge aligns with numbers on the post to locate the desired shelf position. Shelf seats into position over the posts and wedges. A unit can be assembled without tools in minutes.
- **Interchangeable:** Part of the MetroMax platform, corrosion proof MetroMax i shelves are compatible on the same shelving units with MetroMax Q and MetroMax 4 shelves.
- **Robust Open Grid and Solid Mat Options:** Shelf mats are sturdy and safely support concentrated loads from instrumentation and equipment. Built-in ship's edge helps contain supplies in mobile applications.
Open grid mats are sectioned and promote air circulation and light penetration.
One-piece solid mats offer maximum spill retention and are ideal to protect items on the bottom shelf from dirt or backsplashes from cleaning floors.
Note: 72" L (1829mm) solid shelf has two mat sections.
- **NSF Listed** for all environments.
- **Maximum Versatility:** complete line of accessories are found on spec sheet 9.25.



MICROBAN® and the MICROBAN® symbol are registered trademarks of the Microban® Products Company, Huntersville, NC. Microban® product protection does not by itself protect a user from food borne illness. Product must be routinely cleaned.



Supports good
HACCP
processes



All Metro Catalog Sheets are available on our website: metro.com

MetroMax® i Polymer Shelving

Material Specifications:

- **Shelf Mats:** Polypropylene with built-in Microban antimicrobial product protection.
- **Longitudinal Beams:** Pultrusions — continuous glass fibers and thermoset resin composite.
- **End Beams, Adjustable Foot and Socket, Shelf Wedge Connector:** Reinforced nylon.
- **Fasteners:** Type 304 stainless steel screws.
- **Posts:** Pultrusions — continuous glass fibers and thermoset resin composite.
- **Post Cap and Center Beam Cap:** High-density polyethylene.
- **“S” Hook Tab Hole Plug:** Vinyl.
- **Collar and “S” Hook:** Type 304 stainless steel.
- **Continuous Temperature:** MetroMax i® can be used continuously within a range of -20/120° F (-29/49° C) with intermittent exposure to 212° F (100° C) for cleaning.



Replacement MetroMax i Wedges
Cat. No. **MX9985**
Bag of 4 wedges

Standard Shelves

- Part number includes shelf with removable mats and one bag of wedges.

Shelf with Grid Mats Model No.	Approx. Pkd. Wt.		Shelf with Solid Mat Model No.	Approx. Pkd. Wt.		Nominal Size		Actual Size					
	(lbs.)	(kg)		(lbs.)	(kg)	Width (in.) (mm)	Length (in.) (mm)	Width (in.) (mm)	Length (in.) (mm)	Width (in.) (mm)	Length (in.) (mm)		
MX1824G	8.7	4.0	MX1824F	12.7	5.8	18	457	24	610	18 ¹ / ₄	464	23 ¹¹ / ₁₆	602
MX1830G	10.5	4.7	MX1830F	14.5	6.6	18	457	30	762	18 ¹ / ₄	464	29 ¹ / ₁₆	754
MX1836G	12.2	5.5	MX1836F	17.2	7.8	18	457	36	914	18 ¹ / ₄	464	35 ¹¹ / ₁₆	907
MX1842G	13.9	6.3	MX1842F	20.1	9.1	18	457	42	1067	18 ¹ / ₄	464	41 ¹¹ / ₁₆	1059
MX1848G	15.7	7.1	MX1848F	23.1	10.5	18	457	48	1219	18 ¹ / ₄	464	47 ¹¹ / ₁₆	1211
MX1854G	17.5	7.9	MX1854F	21.5	9.7	18	457	54	1372	18 ¹ / ₄	464	53 ¹¹ / ₁₆	1364
MX1860G	19.2	8.7	MX1860F	23.2	10.5	18	457	60	1524	18 ¹ / ₄	464	59 ¹¹ / ₁₆	1516
MX1872G	22.5	10.2	MX1872F	27.5	12.5	18	457	72	1829	18 ¹ / ₄	464	71 ¹¹ / ₁₆	1821
MX2424G	12.2	5.5	MX2424F	14.2	6.4	24	610	24	610	24 ¹ / ₄	616	23 ¹¹ / ₁₆	602
MX2430G	13.9	6.3	MX2430F	15.9	7.2	24	610	30	762	24 ¹ / ₄	616	29 ¹ / ₁₆	754
MX2436G	15.6	7.1	MX2436F	19.6	8.9	24	610	36	914	24 ¹ / ₄	616	35 ¹¹ / ₁₆	907
MX2442G	17.5	7.9	MX2442F	21.5	9.8	24	610	42	1067	24 ¹ / ₄	616	41 ¹¹ / ₁₆	1059
MX2448G	19.3	8.7	MX2448F	25.3	11.5	24	610	48	1219	24 ¹ / ₄	616	47 ¹¹ / ₁₆	1211
MX2454G	21.0	9.5	MX2454F	25.0	11.3	24	610	54	1372	24 ¹ / ₄	616	53 ¹¹ / ₁₆	1364
MX2460G	22.8	10.3	MX2460F	26.8	12.1	24	610	60	1524	24 ¹ / ₄	616	59 ¹¹ / ₁₆	1516
MX2472G	26.0	11.8	MX2472F	31.0	14.1	24	610	72	1829	24 ¹ / ₄	616	71 ¹¹ / ₁₆	1821

Heavy-Duty Dunnage Shelves

- Weight capacity per shelf evenly distributed: 1,200 lbs. (544kg) on shelves up to and including 48" (1220mm) long; 900 lbs. (408kg) for shelves 54" (1370mm) and longer.
- Dunnage shelves are recommended for use on units with four posts, not as part of an add-on unit with two posts.

Shelf with Grid Mat Model No.	Nominal Size		Approx. Pkd. Wt. (lbs.) (kg)
	Width (in.) (mm)	Length (in.) (mm)	
MHP2436G	24	610	36 914 21 9.5
MHP2448G	24	610	48 1220 27 12.2
MHP2454G	24	610	54 1370 29 13.2
MHP2460G	24	610	60 1524 33 15.0

Stationary Posts

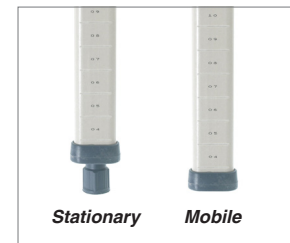
Model No.	Nominal Height		Actual Height*		Approx. Pkd. Wt.	
	(in.)	(mm)	(in.)	(mm)	(lbs.)	(kg)
MX13P	13	370	14 ³ / ₁₆	360	0.5	0.2
MX27P	27	685	28 ³ / ₁₆	716	0.9	0.4
MX33P	33	875	34 ³ / ₁₆	868	1.0	0.5
MX54P	54	1370	54 ³ / ₁₆	1376	1.6	0.7
MX63P	63	1585	62 ³ / ₁₆	1580	1.8	0.8
MX74P	74	1890	74 ³ / ₁₆	1884	2.2	1.0
MX86P	86	2195	86 ³ / ₁₆	2189	3.0	1.4

*Actual Height with leveling foot completely tightened. Leveling foot can be adjusted up to 1" (25mm) to compensate for uneven floors.

Mobile Posts — for use with stem casters

Model No.	Nominal Height		Actual Height		Approx. Pkd. Wt.	
	(in.)	(mm)	(in.)	(mm)	(lbs.)	(kg)
MX9UP	9	228	9 ³ / ₁₆	233	0.3	0.15
MX13UP	13	370	13 ³ / ₁₆	335	0.5	0.2
MX27UP	27	685	27 ³ / ₁₆	691	0.9	0.4
MX33UP	33	875	33 ³ / ₁₆	843	1.0	0.5
MX54UP	54	1370	53 ³ / ₁₆	1351	1.6	0.7
MX63UP	63	1585	61 ³ / ₁₆	1554	1.8	0.8
MX70UP	70	1778	69 ³ / ₁₆	1757	2.0	0.9
MX74UP	74	1890	73 ³ / ₁₆	1859	2.2	1.0
MX86UP	86	2195	85 ³ / ₁₆	2164	3.0	1.4

Consult spec sheet 9.25 for stem casters.



Note: For special height cut posts, consult your Metro representative.



Item # _____

We put space to work.

Job _____

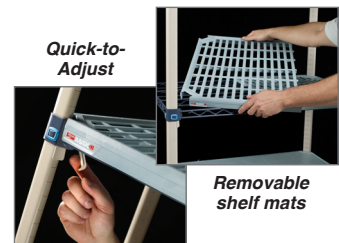
MetroMax Q® Polymer / Wire Shelving

Quick-to-adjust, corrosion resistant shelving constructed of removable polymer open grid shelf mats, wire shelf frames, and corner releases. Shelf frames and steel posts have an epoxy coating over an electroplated substrate. Shelves offer a 20 year warranty against rust and corrosion. Polymer posts are rust proof. Microban® antimicrobial product protection is built into the shelf mats and posts. Shelf has a rigid four-sided frame with center truss(es). Robust corner provides complete 360° capture of the wedge and post for added stability. Stationary units have maximum capacity of 2,000 lbs. (907kg) evenly distributed. Mobile units (with stem casters) offer a maximum total unit load of 900 lbs. (408kg). Units assemble easily — shelves mount on four one-piece wedges along grooved, numbered posts and adjust on 1" (25mm) increments.

- **Forever Strong:** Proven corner connection and four-sided shelf frame with center truss(es) assures stability and strength in stationary, mobile, and high-density track shelving configurations.
800 lbs. (363kg) per shelf for lengths of 24" to 48" (610 to 1219mm)
600 lbs. (272kg) per shelf for lengths of 54" (1372mm) or longer
Stationary unit: 2000lbs (907kg) evenly distributed.
Mobile unit (with stem casters): Up to 900lbs. (408kg).
Multiply the caster load rating by 3 to determine actual rating.
- **Long life Rust Resistance:** Shelves offer a 20 year limited corrosion warranty and are combined with rust proof polymer posts.
- **Easy to Clean and Maintain:** Polymer mats can be easily removed and cleaned in a sink or commercial washer / dish machine.
- **Microban® Antimicrobial Product Protection** is built into the shelf mats and posts to inhibit the growth of bacteria, mold, mildew, and fungus that cause odors and product degradation. Microban product protection keeps the product "cleaner between cleanings".
- **Quick-to-Adjust:** Patented corner release allows shelves to be adjusted without tools. Simply flip each corner release, relocate the wedge connectors on the posts, and reposition the shelf. Quickly adjust shelves to reclaim wasted vertical space.
- **Efficient Use of Space:** Shelves adjust on 1" (25mm) increments along the post to maximize the use of available vertical space.
- **Fast, Easy Assembly:** Shelves are ready to use right out of the box. One-piece wedges securely attach to the posts. Raised beads on the back of each wedge snap into grooves on the post. Window on wedge aligns with numbers on the post to locate the desired shelf position. Shelf mounts on four wedges. A unit can be assembled without tools in minutes.
- **Interchangeable:** Part of the MetroMax platform, MetroMax Q shelves are compatible on the same shelving units with MetroMax i and MetroMax 4 shelves.
- **Open Grid and Solid Mat Options:** MetroMax Q is available with open grid mats. Open grid shelves promote air circulation and light penetration. If a solid shelf is required, MetroMax i or MetroMax 4 solid shelves may be added to the MetroMax Q unit.
- **NSF Listed** for all environments.
- **Optional Accessories** are on spec sheet 9.25.

Material Specifications:

- **Shelf Mats:** Injection-molded polypropylene with exclusive built-in Microban® antimicrobial product protection.
- **Shelf frames:** Steel with electroplated substrate and highly durable, abrasion-resistant epoxy finish.
- **Epoxy-coated posts:** Steel with electroplated substrate and highly durable, abrasion-resistant epoxy finish. Epoxy finish has built-in Microban antimicrobial product protection. The adjustable foot is reinforced nylon.
- **Temperature range:** -20°F (-29°C) to 125°F (52°C) continuous use, with intermittent exposure to 200°F (93°C) for cleaning. Visit metro.com/service-support for cleaning guidelines.



Quick-to-Adjust

Removable shelf mats

*MICROBAN® and the MICROBAN® symbol are registered trademarks of the Microban® Products Company, Huntersville, NC. Microban® product protection does not by itself protect a user from food borne illness. Product must be routinely cleaned.



All Metro Catalog Sheets are available on our website: www.metro.com



InterMetro Industries Corporation
North Washington Street, Wilkes-Barre, PA 18705
Product Information. U.S. and Canada: 1.800.992.1776
Outside U.S. and Canada: www.metro.com/contactus

L02-178
Printed in U.S.A. 11/21

Information and specifications are subject to change without notice. Please confirm at time of order.

Copyright © 2021 InterMetro Industries Corp.



MetroMax Q® Polymer / Wire Shelving

9.21



MetroMax Q[®] POLYMER / WIRE SHELVING

We put space to work.™

Standard Interchangeable Shelves

Part number includes shelf with removable mats and one bag of wedges

Nominal Width/Length (in.) (mm)		Cat. No. Shelf w/ grid Mats	Nominal Width/Length (in.) (mm)		Cat. No. Shelf w/ grid Mats
14x24	355x610	MQ1424G	21x24	530x610	MQ2124G
14x30	355x760	MQ1430G	21x30	530x760	MQ2130G
14x36	355x914	MQ1436G	21x36	530x914	MQ2136G
14x42	355x1060	MQ1442G	21x42	530x1060	MQ2142G
14x48	355x1219	MQ1448G	21x48	530x1219	MQ2148G
-	-	-	21x54	530x1372	MQ2154G
14x60	355x1524	MQ1460G	21x60	530x1524	MQ2160G
14x72	355x1829	MQ1472G	21x60	530x1829	MQ2172G
18x24	457x610	MQ1824G	24x24	610x610	MQ2424G
18x30	457x760	MQ1830G	24x30	610x760	MQ2430G
18x36	457x914	MQ1836G	24x36	610x914	MQ2436G
18x42	457x1060	MQ1842G	24x42	610x1060	MQ2442G
18x48	457x1219	MQ1848G	24x48	610x1219	MQ2448G
18x54	457x1372	MQ1854G	24x54	610x1372	MQ2454G
18x60	457x1524	MQ1860G	24x60	610x1524	MQ2460G
18x72	457x1829	MQ1872G	24x60	610x1829	MQ2472G

Heavy-Duty Dunnage Shelves

- Weight capacity per shelf evenly distributed: 1,200 lbs. (544kg) on shelves up to and including 48" (1219mm) long; 900 lbs. (408kg) for shelves 54" (1370mm) and longer.
- Dunnage shelves must be used on shelving units with four posts.

Grid Mat Model No.	Nominal Width (mm)		Nominal Length (mm)		Approx. Pkd. Wt. (lbs./kg)	
	(in.)	(mm)	(in.)	(mm)	(lbs.)	(kg)
MHP2436G	24	610	36	914	21	9.5
MHP2448G	24	610	48	1220	27	12.2
MHP2454G	24	610	54	1370	29	13.2
MHP2460G	24	610	60	1524	33	15.0

Shelving Height Guidelines – MetroMax

Shelf Depth	14" (356mm)	18" (457mm)	21" (533mm)	24" (610mm)
Maximum Post Height Allowable	▼	▼	▼	▼
Stationary	63" (1600mm)	86" (2184mm)	86" (2184mm)	86" (2184mm)
Mobile	54" (1372mm)	74" (1880mm)	74" (1880mm)	86" (2184mm)

Note: 14" deep stationary shelving taller than 63" must be properly fastened to floor or the wall. Reference spec sheet 9.25, page 2 for options.

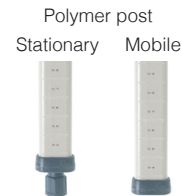
Rust Proof Polymer Posts - Lifetime warranty against rust.

Stationary - with leveling foot

Epoxy-Coated Steel Model No.	Approx. Pkd. Wt. (lbs.) (kg)	Nominal Height (in.) (mm)	Actual Height (in.) (mm)
MX13P	0.5 0.2	13 370	14 ³ / ₁₆ 360
MX27P	0.9 0.4	27 685	28 ³ / ₁₆ 716
MX33P	1.0 0.5	33 875	34 ³ / ₁₆ 868
MX54P	1.6 0.7	54 1370	54 ³ / ₁₆ 1376
MX63P	1.8 0.8	63 1585	62 ³ / ₁₆ 1580
MX74P	2.3 1.0	74 1690	74 ³ / ₁₆ 1884
MX86P	2.5 1.4	86 2195	86 ³ / ₁₆ 2189

Mobile - for stem casters

Polymer Model No.	Approx. Pkd. Wt. (lbs.) (kg)	Nominal Height (in.) (mm)	Actual Height (in.) (mm)
MX13UP	0.5 0.2	13 370	14 ³ / ₁₆ 360
MX27PE	2.0 0.9	27 685	28 ³ / ₁₆ 716
MX33UP	1.0 0.5	33 875	34 ³ / ₁₆ 868
MX54UP	1.6 0.7	54 1370	54 ³ / ₁₆ 1376
MX63UP	1.8 0.8	63 1585	62 ³ / ₁₆ 1580
MX70UP	2.0 0.9	70 1778	69 ³ / ₁₆ 1757
MX74UP	2.3 1.0	74 1690	74 ³ / ₁₆ 1884
MX86UP	3.0 1.4	86 2195	86 ³ / ₁₆ 2189



Shelf Wedge Connector:
Reinforced nylon. Replacement MetroMax Q Wedges Cat. No. MQ9985 (Bag of 4)

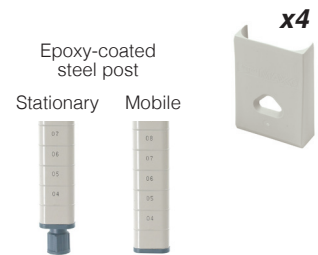
Epoxy Coated Steel Posts - For heavy-duty mobile applications. 15 year limited rust warranty.

Stationary - with leveling foot

Polymer Model No.	Approx. Pkd. Wt. (lbs.) (kg)	Nominal Height (in.) (mm)	Actual Height (in.) (mm)
MQ13PE	1.0 0.5	13 370	14 ³ / ₁₆ 360
MQ27PE	2.0 0.9	27 685	28 ³ / ₁₆ 716
MQ33PE	2.5 1.1	33 875	34 ³ / ₁₆ 868
MQ54PE	4.0 1.8	54 1370	54 ³ / ₁₆ 1376
MQ63PE	4.5 2.0	63 1585	62 ³ / ₁₆ 1580
MQ74PE	5.5 2.5	74 1690	74 ³ / ₁₆ 1884
MQ86PE	6.5 2.9	86 2195	86 ³ / ₁₆ 2189

Mobile - for stem casters

Epoxy-Coated Steel Model No.	Approx. Pkd. Wt. (lbs.) (kg)	Nominal Height (in.) (mm)	Actual Height (in.) (mm)
MQ13UPE	1.0 0.5	13 370	14 ³ / ₁₆ 360
MQ27UPE	2.0 0.9	27 685	28 ³ / ₁₆ 716
MQ33UPE	2.5 1.1	33 875	34 ³ / ₁₆ 868
MQ54UPE	4.0 1.8	54 1370	54 ³ / ₁₆ 1376
MQ63UPE	4.5 2.0	63 1585	62 ³ / ₁₆ 1580
MQ70UPE	2.0 0.9	70 1778	69 ³ / ₁₆ 1757
MQ74UPE	5.5 2.5	74 1690	74 ³ / ₁₆ 1884
MQ86UPE	6.5 2.9	86 2195	86 ³ / ₁₆ 2189





Item # _____

We put space to work.

Job _____

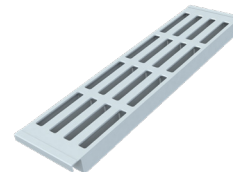


MetroMax® 4 Polymer Shelving

MetroMax® 4 Polymer Shelving

All-polymer corrosion proof shelving with removable open grid or solid shelf mat sections. Shelves and polymer posts offer a lifetime warranty against rust and corrosion. Shelf mats and posts have built-in Microban® antimicrobial product protection. Rigid four-sided shelf frame and robust corner with complete 360° capture of the wedge and post ensure stability, strength and structural integrity. Stationary units have maximum capacity of 2,000 lbs. (907kg) evenly distributed. Mobile units (with stem casters) offer a maximum total unit load of 750lbs. (340kg). Units assemble easily—shelves mount on four one-piece wedges along grooved, numbered posts. Shelves adjust on 1" (25mm) increments.

- **Rust & Corrosion Proof:** All-polymer construction withstands moisture, chemicals, and harsh environments.
- **Lifetime:** Polymer shelves and posts offer a Lifetime Warranty against rust and corrosion.
- **Proven Stability:** Proven Metro corner design and rigid four-sided shelf frame deliver sturdy stationary, mobile, or high-density track shelving configurations.
- **Easy-to-Clean:** 6" (152mm) wide shelf mats easily remove from the shelf for cleaning by hand or in a commercial washer / dish machine.
- **Microban® Antimicrobial Product Protection** is built into the shelf mats and posts to inhibit the growth of bacteria, mold, mildew, and fungus that cause odors and product degradation. Microban product protection keeps the product "cleaner between cleanings".
- **Smooth, Protective Surfaces:** Smooth, flat surfaces protect packaged shelf contents from unwanted rips, tears, or damage.
- **Weight Load Capacities (Evenly Distributed)**
Shelf up to and including 48" (1220mm) length: 800 lbs. (363kg)
Shelf 54" (1372mm) or longer: 600 lbs. (272kg)
Stationary Unit: 2,000 lbs. (907kg)
Mobile Unit (with stem casters): up to 750 lbs. (340kg). Multiply the caster load rating by 3 to determine actual rating [not to exceed 750 lbs. (340kg)].
- **Efficient Use of Space:** Shelves adjust on 1" (25mm) increments along the post to maximize the use of available vertical space.
- **Fast, Easy Assembly:** Shelves are ready to use right out of the box. One-piece wedges securely attach to the posts – Raised beads on the back of each wedge snap into the grooves on the post. Window on wedge aligns with numbers on the post to locate the desired shelf position. Shelf seats into position over the posts and wedges. A unit can be assembled without tools in minutes.
- **Interchangeable:** Part of MetroMax platform, MetroMax 4 is compatible on the same shelving units with MetroMax i® and MetroMax Q® shelves.
- **Two shelf styles:** All MetroMax 4 shelf mats have a 3/16" (5mm) tall ship's edge built into each end to help contain supplies during mobile applications.
Open Grid: Promotes air flow and light penetration.
Solid: Built-in recesses help contain spills. Solid bottom shelf serves as a barrier to dirt and debris.
- **NSF Listed** for all environments.
- **Optional Accessories** are on spec sheet 9.25.



Open Grid Mat



Solid Mat

*MICROBAN® and the MICROBAN® symbol are registered trademarks of the Microban® Products Company, Huntersville, NC. Microban® product protection does not by itself protect a user from food borne illness. Product must be routinely cleaned.

All Metro Catalog Sheets are available on our website: www.metro.com



Supports good **HACCP** processes



InterMetro Industries Corporation
North Washington Street, Wilkes-Barre, PA 18705
Product Information. U.S. and Canada: 1.800.992.1776
Outside U.S. and Canada: www.metro.com/contactus

L02-195
Printed in U.S.A. 6/22

Information and specifications are subject to change without notice. Please confirm at time of order.

Copyright © 2022 InterMetro Industries Corp.

9.22



We put space to work.®

MetroMax® 4 POLYMER SHELVING

Material Specifications:

- **Shelf Mats:** Polypropylene. Mats contain Microban® antimicrobial product protection.
- **Longitudinal Beams:** Pultrusions — continuous glass fibers and thermoset resin composite.
- **End Beams, Adjustable Foot and Socket, Shelf Wedge Connector:** reinforced nylon.
- **Posts:** Pultrusions — continuous glass fibers and thermoset resincomposite with built-in Microban® antimicrobial product protection.
- **Post Cap:** High-density polyethylene.
- **Continuous Temperature Exposure Range** (with shelves under load): -20/120° F (-29/49° C). For cleaning the maximum intermittent temperature exposure is 212° F (100° C).



MetroMax 4 Shelves

Part number includes shelf with removable mats and one bag of wedges.

Shelf with Grid Mats Model No.	Approx. Pkd. Wt.		Shelf with Solid Mats Model No.	Approx. Pkd. Wt.		Nominal Size			Actual Size				
	(lbs.)	(kg)		(lbs.)	(kg)	Width (in.)	Length (in.)	Width (mm)	Length (mm)	Width (mm)	Length (mm)		
MAX4-1824G	6.3	2.9	MAX4-1824F	6.5	3.0	18	457	24	610	18½	470	23½ ¹⁵ / ₁₆	608
MAX4-1830G	7.4	3.4	MAX4-1830F	7.7	3.5	18	457	30	762	18½	470	29½ ¹⁵ / ₁₆	760
MAX4-1836G	8.8	4.0	MAX4-1836F	9.2	4.2	18	457	36	914	18½	470	35½ ¹⁵ / ₁₆	913
MAX4-1842G	9.6	4.3	MAX4-1842F	10.0	4.5	18	457	42	1067	18½	470	41½ ¹⁵ / ₁₆	1065
MAX4-1848G	10.8	4.9	MAX4-1848F	11.3	5.1	18	457	48	1219	18½	470	47½ ¹⁵ / ₁₆	1218
MAX4-1854G	11.7	5.3	MAX4-1854F	12.3	5.6	18	457	54	1372	18½	470	53½ ¹⁵ / ₁₆	1370
MAX4-1860G	12.8	5.8	MAX4-1860F	13.5	6.1	18	457	60	1524	18½	470	59½ ¹⁵ / ₁₆	1522
MAX4-2124G	6.9	3.1	MAX4-2124F	7.2	3.2	21	530	24	610	21½	546	23½ ¹⁵ / ₁₆	608
MAX4-2130G	8.1	3.7	MAX4-2130F	8.5	3.8	21	530	30	762	21½	546	29½ ¹⁵ / ₁₆	760
MAX4-2136G	9.6	4.4	MAX4-2136F	10.1	4.6	21	530	36	914	21½	546	35½ ¹⁵ / ₁₆	913
MAX4-2142G	10.5	4.8	MAX4-2142F	11.0	5.0	21	530	42	1067	21½	546	41½ ¹⁵ / ₁₆	1065
MAX4-2148G	11.9	5.4	MAX4-2148F	12.5	5.7	21	530	48	1219	21½	546	47½ ¹⁵ / ₁₆	1218
MAX4-2154G	12.9	5.9	MAX4-2154F	13.6	6.2	21	530	54	1372	21½	546	53½ ¹⁵ / ₁₆	1370
MAX4-2160G	14.2	6.4	MAX4-2160F	15.0	6.8	21	530	60	1524	21½	546	59½ ¹⁵ / ₁₆	1522
MAX4-2424G	7.3	3.3	MAX4-2424F	7.8	3.5	24	610	24	610	24½	622	23½ ¹⁵ / ₁₆	608
MAX4-2430G	8.8	4.0	MAX4-2430F	9.3	4.2	24	610	30	762	24½	622	29½ ¹⁵ / ₁₆	760
MAX4-2436G	10.5	4.8	MAX4-2436F	11.9	5.0	24	610	36	914	24½	622	35½ ¹⁵ / ₁₆	913
MAX4-2442G	11.8	5.4	MAX4-2442F	12.3	5.6	24	610	42	1067	24½	622	41½ ¹⁵ / ₁₆	1065
MAX4-2448G	13.1	5.9	MAX4-2448F	13.9	6.3	24	610	48	1219	24½	622	47½ ¹⁵ / ₁₆	1218
MAX4-2454G	14.3	6.5	MAX4-2454F	15.4	7.0	24	610	54	1372	24½	622	53½ ¹⁵ / ₁₆	1370
MAX4-2460G	15.5	7.0	MAX4-2460F	17.0	7.7	24	610	60	1524	24½	622	59½ ¹⁵ / ₁₆	1522

Note: Mobile Units taller than 54" (1372mm) require four shelves or more.



x4

Replacement MetroMax 4 Wedges

Cat. No. MAX4-9985
Bag of four wedges

Stationary Posts

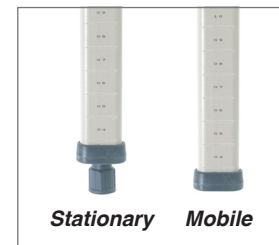
Model No.	Nominal Height (in.)	(mm)	Actual Height* (in.)	(mm)	Approx. Pkd. Wt. (lbs.)	(kg)
MX13P	13	370	14 ³ / ₁₆	360	0.5	0.2
MX27P	27	685	28 ³ / ₁₆	716	0.9	0.4
MX33P	33	875	34 ³ / ₁₆	868	1.0	0.5
MX54P	54	1370	54 ³ / ₁₆	1376	1.6	0.7
MX63P	63	1585	62 ³ / ₁₆	1580	1.8	0.8
MX74P	74	1890	74 ³ / ₁₆	1884	2.2	1.0
MX86P	86	2195	86 ³ / ₁₆	2189	3.0	1.4

*Actual Height with leveling foot completely tightened. Leveling foot can be adjusted up to 1" (25mm) to compensate for uneven floors.

Mobile Posts — for use with stem casters

Model No.	Nominal Height (in.)	(mm)	Actual Height (in.)	(mm)	Approx. Pkd. Wt. (lbs.)	(kg)
MX13UP	13	370	13 ³ / ₁₆	335	0.5	0.2
MX27UP	27	685	27 ³ / ₁₆	691	0.9	0.4
MX33UP	33	875	33 ³ / ₁₆	843	1.0	0.5
MX54UP	54	1370	53 ³ / ₁₆	1351	1.6	0.7
MX63UP	63	1585	61 ³ / ₁₆	1554	1.8	0.8
MX70UP	70	1778	69 ³ / ₁₆	1757	2.0	0.9
MX74UP	74	1890	73 ³ / ₁₆	1859	2.2	1.0
MX86UP	86	2195	85 ³ / ₁₆	2164	3.0	1.4

Consult spec sheet 9.25 for stem casters.



Note: For special height cut posts, consult your Metro representative.

Compatibility with MetroMax® i and MetroMax® Q

MetroMax 4 shelves may be combined with MetroMax i or MetroMax Q shelves on the same unit when a heavier duty shelf is required. All weight capacities are evenly distributed. See spec sheet 9.20 and 9.21 for model numbers.

- MetroMax Q: 48" (1219mm) length or shorter, 800 lbs. (363kg); 54" (1372mm) or longer, 600 lbs. (272kg).
- MetroMax i: 48" (1219mm) length or shorter, 1000 lbs. (454kg); 54" (1372mm) or longer, 750 lbs. (340kg).
- Dunnage shelves: 48" (1219mm) length or shorter, 1,200 lbs. (544kg); 54" (1370mm) length, 900 lbs. (408kg).

an Ali Group Company



The Spirit of Excellence





We put space to work.

Item # _____

Job _____

Super Erecta® Shelf Wire Shelving



- **Unique Design:** The open wire design of these shelves minimizes dust accumulation and allows free circulation of air, greater visibility of stored items and greater light penetration.
- **Durable Construction:** Super Erecta shelves and posts are constructed of heavy-gauge carbon steel or Type 304 stainless steel.
- **Choice of Finishes:** Super Erecta Brite™ and chrome-plated for dry storage; Metroseal™ Epoxy (green or gray), and Type 304 stainless steel for corrosive environments; and attractive epoxy color options for merchandising applications.
- **Metroseal:** Proprietary rust-resistant finish is a durable epoxy coating over a protective zinc substrate. Metroseal contains Microban® antimicrobial product protection which continuously fights the growth of bacteria, mold, and mildew that cause stains and odors. 12-year limited warranty against rust and corrosion.
- **Versatile:** Super Erecta® Shelf wire shelving can adapt to your changing needs. By using various accessories, hundreds of shelving configurations become possible.
- **Fast, Secure Assembly:** SiteSelect® Posts have a double groove visual guide feature every 8" (203mm), circular grooves at 1" (25mm) increments, and are numbered at 2" (50mm) intervals. A patented, tapered split sleeve snaps together around each post. Tapered openings in the shelf corners slide over the tapered split sleeves providing a positive lock. Shelf is assembled in minutes without the use of any special tools.
- **Adjustability:** Shelves can be adjusted at 1" (25mm) intervals along the entire length of the post.
- **Shelf Ribs:** Run front to back, allowing you to slide items on and off shelves smoothly.
- **Shelf Accessibility:** Shelves can be loaded/unloaded easily from all sides. This open construction allows maximum use of storage cube.
- **Adjustable Feet:** Bolt levelers compensate for surface irregularities.

Note: Stainless stationary posts are equipped with stainless steel leveling feet.



Super Erecta Chrome Wire



Super Erecta with Metroseal



Gray Metroseal Epoxy Finish with Microban



Green Metroseal Epoxy Finish with Microban



InterMetro Industries Corporation
 North Washington Street, Wilkes-Barre, PA 18705
 Product Information. U.S. and Canada: 1.800.992.1776
 Outside U.S. and Canada: www.metro.com/contactus

L02-006e
Printed in U.S.A. 6/20

Information and specifications are subject to change without notice. Please confirm at time of order.

Copyright © 2020 InterMetro Industries Corp.



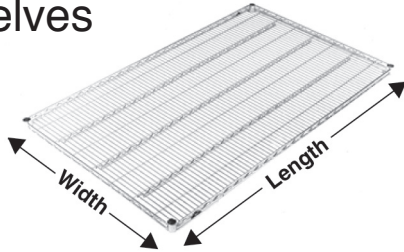
Super Erecta® Shelf Wire Shelving

10.01



Super Erecta® Shelf Wire Shelving

Wire Shelves



Aluminum Split Sleeve

- See spec sheet 10.14 for epoxy color options.
- Plastic split sleeves are included with each shelf. Replacements are available: Cat. No. **9985** (bag of 4)
- Aluminum split sleeves are recommended for abusive mobile applications. Sleeves with stainless C-rings must be used for cart wash applications (exceeding 200°F/93°C) and for all autoclave applications.
Cat. No. **9986Z** (bag of 4 with zinc C-rings)
Cat. No. **9986S** (bag of 4 with stainless steel C-rings)
- Weight capacity (evenly distributed) per shelf
800 lbs. (363kg) for lengths of 18" to 48" (457 to 1219mm)
600 lbs. (272kg) for lengths of 54" (1370mm) or longer
- Weight capacity (evenly distributed) per unit. Stationary shelving units have a maximum load capacity (evenly distributed) of 2,000 lbs. (907kg). Mobile units have a maximum capacity of three times the caster load rating up to but not exceeding 1,000 lbs. (453kg) total. Consult the Metro catalog for caster load ratings.

Cat. No. Super Erecta Brite	Cat. No. Chrome	Cat. No. Metroseal Green (K3) with Microban	Cat. No. Metroseal Gray (K4) with Microban	Cat. No. Stainless	Nominal Width/Length		Approx. Pkd. Wt.	
					(in.)	(mm)	(lbs.)	(kg)
1424BR	1424NC	1424NK3	1424NK4	1424NS	14x24	355x610	5.3	2.4
1430BR	1430NC	1430NK3	1430NK4	1430NS	14x30	355x760	6.3	2.8
1436BR	1436NC	1436NK3	1436NK4	1436NS	14x36	355x914	7.5	3.4
1442BR	1442NC	1442NK3	1442NK4	1442NS	14x42	355x1066	8.3	3.8
1448BR	1448NC	1448NK3	1448NK4	1448NS	14x48	355x1219	9.4	4.3
1460BR	1460NC	1460NK3	1460NK4	1460NS	14x60	355x1524	11.8	5.4
1472BR	1472NC	1472NK3	1472NK4	1472NS	14x72	355x1829	14.4	6.5
-	1818NC	1818NK3	1818NK4	-	18x18	457x457	5.3	2.4
1824BR	1824NC	1824NK3	1824NK4	1824NS	18x24	457x610	6.1	2.7
1830BR	1830NC	1830NK3	1830NK4	1830NS	18x30	457x760	7.1	3.2
1836BR	1836NC	1836NK3	1836NK4	1836NS	18x36	457x914	8.2	3.7
1842BR	1842NC	1842NK3	1842NK4	1842NS	18x42	457x1066	9.3	4.2
1848BR	1848NC	1848NK3	1848NK4	1848NS	18x48	457x1219	10.7	4.9
1854BR	1854NC	1854NK3	1854NK4	1854NS	18x54	457x1370	11.9	5.4
1860BR	1860NC	1860NK3	1860NK4	1860NS	18x60	457x1524	13.4	6.1
1872BR	1872NC	1872NK3	1872NK4	1872NS	18x72	457x1829	14.6	6.6
2124BR	2124NC	2124NK3	2124NK4	2124NS	21x24	530x610	10.1	4.6
2130BR	2130NC	2130NK3	2130NK4	2130NS	21x30	530x760	10.5	4.8
2136BR	2136NC	2136NK3	2136NK4	2136NS	21x36	530x914	10.7	4.9
2142BR	2142NC	2142NK3	2142NK4	2142NS	21x42	530x1066	11.5	5.2
2148BR	2148NC	2148NK3	2148NK4	2148NS	21x48	530x1219	11.9	5.4
2154BR	2154NC	2154NK3	2154NK4	2154NS	21x54	530x1370	12.9	5.8
2160BR	2160NC	2160NK3	2160NK4	2160NS	21x60	530x1524	13.4	6.1
2172BR	2172NC	2172NK3	2172NK4	2172NS	21x72	530x1829	14.4	6.5
2424BR	2424NC	2424NK3	2424NK4	2424NS	24x24	610x610	6.5	3.0
2430BR	2430NC	2430NK3	2430NK4	2430NS	24x30	610x760	8.3	3.8
2436BR	2436NC	2436NK3	2436NK4	2436NS	24x36	610x914	10.1	4.6
2442BR	2442NC	2442NK3	2442NK4	2442NS	24x42	610x1066	11.9	5.4
2448BR	2448NC	2448NK3	2448NK4	2448NS	24x48	610x1219	14.2	6.4
2454BR	2454NC	2454NK3	2454NK4	2454NS	24x54	610x1370	16.1	7.3
2460BR	2460NC	2460NK3	2460NK4	2460NS	24x60	610x1524	18.0	8.2
2472BR	2472NC	2472NK3	2472NK4	2472NS	24x72	610x1829	21.4	9.7

Note: The actual length of the shelves is 1/8" (3.2mm) shorter than the nominal dimension shown. The actual depth of the shelves is 1/8" (3.2mm) greater than the nominal dimension shown.

Note: The following restrictions apply to shelving units that utilize 14" (355mm) wide shelves:
Free-standing units: Units taller than 63" (1600mm) must be properly fastened to the floor or wall using Metro foot plates or wall brackets.
Mobile units: maximum allowable post height is 54" (1370mm).

Super Erecta® Shelf Wire Shelving

SiteSelect® Posts

Stationary Posts - Equipped with a leveling bolt to account for uneven floors.

- Height includes leveling bolt (completely tightened) and post cap. Leveling bolt can be adjusted 0.5" (13mm).
- Foot plates may be ordered separately and installed in place of leveling foot.
- Replacement leveling bolts: Zinc Cat. No. **RPF04-004**, Stainless Steel Cat. No. **RPF04-004C**
- Replacement post cap for standard posts: Black Cat. No. **RPC06-035**



SiteSelect Posts feature double grooves every 8" (203mm) to aid assembly.

Cat. No. Chrome	Cat. No. Metroseal Green (K3) with Microban	Cat. No.. Metroseal Gray (K4) with Microban	Cat. No. Stainless Steel	Actual Height		Approx. Pkd. Wt.	
				(in.)	(mm)	(lbs.)	(kg)
7P	7PK3	7PK4	-	7.375	187	0.5	0.3
13P	13PK3	13PK4	13PS	14.375	365	1	0.5
27P	27PK3	27PK4	27PS	28.375	720	1.75	0.75
33P	33PK3	33PK4	33PS	34.375	873	2	0.9
54P	54PK3	54PK4	54PS	54.4375	1382	3	1.4
63P	63PK3	63PK4	63PS	62.4375	1585	3.5	1.6
74P	74PK3	74PK4	74PS	74.5	1892	4	1.8
86P	86PK3	86PK4	86PS	86.5	2197	5	2.3
*96P	-	-	-	96.5	2450	5.5	2.5

*96P should not be used on units less than 24" (610mm) deep. Consult Metro Engineering for alternate recommendations.



Stationary Post



Post for Stem Caster

Mobile Posts (For use with Stem Casters)

- Height includes post cap.

Cat. No. Chrome	Cat. No. Metroseal Green (K3) with Microban	Cat. No. Metroseal Gray (K4) with Microban	Cat. No. Stainless Steel	Actual Height		Approx. Pkd. Wt.	
				(in.)	(mm)	(lbs.)	(kg)
13UP	13UPK3	13UPK4	13UPS	13.75	349	1	0.5
27UP	27UPK3	27UPK4	27UPS	27.75	704	1.75	0.75
33UP	33UPK3	33UPK4	33UPS	33.75	857	2	0.9
54UP	54UPK3	54UPK4	54UPS	53.8125	1366	3	1.4
63UP	63UPK3	63UPK4	63UPS	61.8125	1570	3.5	1.6
-	70UPK3	70UPK4	-	69.75	1771	3.75	1.7
74UP	74UPK3	74UPK4	74UPS	73.875	1876	4	1.8
86UP	86UPK3	86UPK4	86UPS	85.875	2181	4.5	2.0

Special Length Posts

Cut posts are available. Consult your Metro representative for more information.

Staked Posts (For use with Truck Dollies)

- Each post connects to the truck dolly through the stem receptacle. The stem receptacle is staked into the bottom of the post to ensure a durable connection in abusive mobile applications. Each includes a leveling/connecting bolt.

Cat. No. Chrome	Cat. No. Stainless Steel	Actual Height		Approx. Pkd. Wt.	
		(in.)	(mm)	(lbs.)	(kg)
54P-STKD	54PS-STKD	54.4375	1382	3	1.4
63P-STKD	63PS-STKD	62.4375	1585	3.5	1.6
74P-STKD	74PS-STKD	74.5	1892	4	1.8



Staked Post



Swaged Post

Swaged Posts (For use with Stem Casters in Cart Wash Applications)

- Each post has an aluminum cap swaged into the top of the post.

Cat. No. Stainless Steel	Actual Height		Approx. Pkd. Wt.	
	(in.)	(mm)	(lbs.)	(kg)
33UPS-SW	33.75	857	2	.9
54UPS-SW	53.8125	1366	3	1.4
63UPS-SW	61.8125	1570	3.5	1.6



We put space to work.

Super Erecta Shelf® Wire Shelving

Super Wide Shelving

- **High-density Storage:** Super Wide shelves have a greater storage area for holding large quantities of supplies, especially large, bulky objects, providing maximum storage in minimum space.

- **Load Capacity (evenly distributed) per shelf:**

Depths: 30" and 36" (760 and 914mm)

800 lbs. (363kg) for lengths 48" (1219mm) or shorter.

600 lbs. (272kg) for lengths 54" (1370mm) or longer.

Cat. No. Chrome	Cat. No. Metroseal Green (K3) with Microban	Cat. No.. Metroseal Gray (K4) with Microban	Cat. No. Stainless Steel	Nominal Width/Length		Approx. Pkd. Wt.	
				(in.)	(mm)	(lbs.)	(kg)
3036NC	3036NK3	3036NK4	3036NS	30x36	760x914	14.2	6.4
3048NC	3048NK3	3048NK4	3048NS	30x48	760x1219	17.7	8.0
3060NC	3060NK3	3060NK4	3060NS	30x60	760x1524	20.2	9.2
3072NC	3072NK3	3072NK4	3072NS	30x72	760x1829	22.7	10.3
3636NC	3636NK3	-	3636NS	36x36	910x914	16.7	7.6
3648NC	3648NK3	-	3648NS	36x48	910x1219	21.6	9.8
3660NC	3660NK3	-	3660NS	36x60	910x1524	26.4	12.0
3672NC	3672NK3	-	3672NS	36x72	910x1829	31.6	14.3

Note: The actual length of the shelves is 1/8" (3.2mm) shorter than the nominal dimension shown. The actual depth of the shelves is 1/8" (3.2mm) greater than the nominal dimension shown.



Foot Plates

- Use to bolt units to the floor, or when a broader, more stable foot is desired. Foot plates also help to protect floors by distributing the point load of the shelving unit across a larger contact point.
- Foot plates (completely tightened) add .125" (3mm) to the specified heights of each stationary post on the table.

Zinc Cat. No. **9993Z**

Stainless Steel Cat. No. **9993S**



"S" Hook

- Used to add on shelving units with only two posts required. Order two per shelf level.

Cat. No. **9995Z**



{10.20}



Super Erecta® Shelf Solid Shelving (18-Gauge)

Shelves and Posts

- **Strength:** Two-fold thickness of 18-gauge steel forms $\frac{1}{8}$ " (3.2 mm) raised edges on all four sides of the shelving. This ship's edge gives all-around rigidity and high strength.
- **Weight Load Capacity:** 48" (1219 mm) and shorter holds 800 lbs. (363 kg) per shelf, 60" (1524 mm) holds 600 lbs. (272 kg) per shelf, 72" (1829 mm) holds 300 lbs. (136 kg) per shelf.
- **Sanitary:** Flat, solid style with the raised ship's edge on all four sides and at the corners contains spills, minimizes contamination and permits easier clean-up. Louvered/embossed shelf design allows air circulation under packages and containers.
- **Versatile Construction:** Super Erecta® Shelf solid shelving can change as quickly as your needs change. By using various accessories hundreds of shelving configurations become possible.
- **Shelf Accessibility:** Shelves can be loaded/unloaded from all sides. This open construction allows use of the maximum storage space of the cube.
- **Adjustability:** Shelves can be adjusted in 1" (25 mm) intervals along the entire length of the post.
- **Adjustable Feet:** Leveling bolts compensate for surface irregularities. Note: Stainless steel stationary posts include stainless leveling bolts.

Shelving Units

- **Metro Super Erecta** solid shelving ships knock down. Shelves mount to two-piece split sleeves along grooved 1" diameter posts. Shelves can be installed and adjusted along the entire length of the posts without tools. Solid and Wire shelves may be intermixed on the same shelving units.
- **Stationary units** can be leveled by adjusting the built-in levelling bolts on the stationary posts. **Stem casters** install into stem caster ready mobile posts.
- **Weight Load Capacities** for shelving units are based on evenly distributed load, the type of configuration and in accordance with the stability guidelines and configuration guidelines of the shelving.
 - Stationary shelving units: 2000 lbs. (907 kg)
 - Mobile units on stem casters: 3 times the caster load rating not to exceed 900 lbs. (408 kg).
 - Mobile units on dolly bases: up to 1000 lbs. (454 kg)



All Metro Catalog Sheets are available on our website: metro.com

{10.20} Super Erecta® Shelf Solid Shelving (18-Gauge)



• **Galvanized Shelves:** Formed galvanized 18-gauge sheet with continuous 1/8" (3.2 mm) raised perimeter edge attaches to four uncoated cast aluminum collars with zinc plated hardware. Hemmed two-fold sheet around the perimeter gives overall rigidity and high strength. Each shelf includes a bag of plastic spilt sleeves (high impact polystyrene). Available in flat solid and louvered/embossed styles.

• **Standard Type 304 Stainless Steel Shelves:** Formed Type 304 Stainless Steel 18-gauge sheet with continuous 1/8" (3.2 mm) raised perimeter edge attaches to four e-coated cast aluminum collars with zinc plated hardware. Hemmed two-fold sheet around the perimeter gives overall rigidity and high strength. Each shelf includes a bag of plastic spilt sleeves (high impact polystyrene). Available in flat solid and louvered/embossed styles.



	Width/Length (in.)	Width/Length (mm)	Approx. Pkd. Wt. (lbs.)	Approx. Pkd. Wt. (kg)	GALVANIZED		STANDARD STAINLESS STEEL	
					Flat Galvanized	Louvered/Embossed Galvanized	Flat Stainless	Louvered/Embossed Stainless
	14x24	355x610	10	4.5	1424FG	1424LG	1424FS	1424LS
	14x30	355x760	12	5.4	1430FG	1430LG	1430FS	1430LS
	14x36	355x914	14	6.4	1436FG	1436LG	1436FS	1436LS
	14x42	355x1066	15	6.8	1442FG	1442LG	1442FS	1442LS
	14x48	355x1219	17	7.7	1448FG	1448LG	1448FS	1448LS
	14x60	355x1524	22	9.9	1460FG	1460LG	1460FS	1460LS
	18x24	457x610	11	5.0	1824FG	1824LG	1824FS	1824LS
	18x30	457x760	14	6.4	1830FG	1830LG	1830FS	1830LS
	18x36	457x914	16	7.3	1836FG	1836LG	1836FS	1836LS
	18x42	457x1066	18	8.2	1842FG	1842LG	1842FS	1842LS
	18x48	457x1219	20	9.1	1848FG	1848LG	1848FS	1848LS
	18x54	457x1372	22	9.9	1854FG	—	1854FS	—
	18x60	457x1524	24	10.9	1860FG	1860LG	1860FS	1860LS
	18x72	457x1829	29	13.2	1872FG	—	1872FS	—
	21x24	530x610	13	5.9	2124FG	2124LG	2124FS	2124LS
	21x30	530x760	15	6.8	2130FG	2130LG	2130FS	2130LS
	21x36	530x914	18	8.2	2136FG	2136LG	2136FS	2136LS
	21x42	530x1066	21	9.5	2142FG	2142LG	2142FS	2142LS
	21x48	530x1219	23	10.4	2148FG	2148LG	2148FS	2148LS
	21x60	530x1524	26	11.8	2160FG	2160LG	2160FS	2160LS
	24x24	610x610	15	6.8	2424FG	2424LG	2424FS	2424LS
	24x30	610x760	17	7.7	2430FG	2430LG	2430FS	2430LS
	24x36	610x914	19	8.6	2436FG	2436LG	2436FS	2436LS
	24x42	610x1066	21	9.5	2442FG	2442LG	2442FS	2442LS
	24x48	610x1219	24	10.9	2448FG	2448LG	2448FS	2448LS
	24x54	610x1372	27	12.2	2454FG	—	2454FS	—
	24x60	610x1524	29	14.0	2460FG	2460LG	2460FS	2460LS
	24x72	610x1829	33	15.0	2472FG	—	2472FS	—

Autoclavable/Cart Washable Premium Stainless Steel:

Durable materials for environments subject to harsh cleaning protocols, autoclave sterilization or high temperature cart wash chambers.

• Premium Type 304 Stainless Steel:

Complete Type 304 Stainless Steel construction.

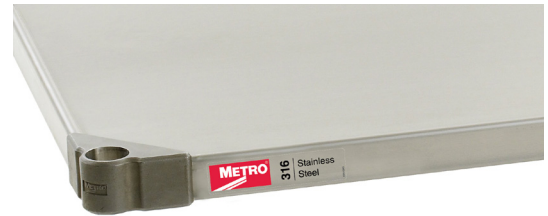
Formed Type 304 Stainless Steel 18-gauge sheet with continuous 1/8" (3.2 mm) raised perimeter edge attaches to four cast Type 304 Stainless Steel collars with Type 304 Stainless Steel hardware. Hemmed two-fold sheet around the perimeter gives overall rigidity and high strength. Each shelf includes a bag of plastic split sleeves (high impact polystyrene). Optional Aluminum Split Sleeves are available.



• Premium Type 316 Stainless Steel:

Complete Type 316 Stainless Steel construction.

Formed Type 316 Stainless Steel 18-gauge sheet with continuous 1/8" (3.2 mm) raised perimeter edge attaches to four cast Type 316 Stainless Steel collars with Type 316 Stainless Steel hardware. Hemmed two-fold sheet around the perimeter gives overall rigidity and high strength. Each shelf includes a bag of plastic split sleeves (high impact polystyrene). Optional Aluminum Split Sleeves are available.



	Width/Length		Approx. Pkd. Wt.		PREMIUM TYPE 304	PREMIUM TYPE 316
	(in.)	(mm)	(lbs.)	(kg)	Stainless Steel Flat Solid	Stainless Steel Flat Solid
14x24	355	610	10	4.5	1424NFS	—
14x30	355	760	12	5.4	1430NFS	—
14x36	355	914	14	6.4	1436NFS	—
14x42	355	1066	15	6.8	1442NFS	—
14x48	355	1219	17	7.7	1448NFS	—
14x60	355	1524	22	9.9	1460NFS	—
18x24	457	610	11	5.0	1824NFS	1824NFS-T316
18x30	457	760	14	6.4	1830NFS	1830NFS-T316
18x36	457	914	16	7.3	1836NFS	1836NFS-T316
18x42	457	1066	18	8.2	1842NFS	1842NFS-T316
18x48	457	1219	20	9.1	1848NFS	1848NFS-T316
18x54	457	1372	22	9.9	—	—
18x60	457	1524	24	10.9	1860NFS	1860NFS-T316
18x72	457	1829	29	13.2	*	—
21x24	530	610	13	5.9	2124NFS	—
21x30	530	760	15	6.8	2130NFS	—
21x36	530	914	18	8.2	2136NFS	—
21x42	530	1066	21	9.5	2142NFS	—
21x48	530	1219	23	10.4	2148NFS	—
21x60	530	1524	26	11.8	2160NFS	—
24x24	610	610	15	6.8	2424NFS	2424NFS-T316
24x30	610	760	17	7.7	2430NFS	2430NFS-T316
24x36	610	914	19	8.6	2436NFS	2436NFS-T316
24x42	610	1066	21	9.5	2442NFS	2442NFS-T316
24x48	610	1219	24	10.9	2448NFS	2448NFS-T316
24x54	610	1372	27	12.2	—	—
24x60	610	1524	29	14.0	2460NFS	2460NFS-T316
24x72	610	1829	33	15.0	*	—

*Contact your Metro representative for availability.

Super Erecta® Shelf Solid Shelving (18-Gauge)

SiteSelect Posts

Type 304 Stainless Steel Posts

- **General construction:** All SiteSelect stainless steel posts consist of 1" (25 mm) outside diameter 18 gauge Type 304 Stainless Steel tubing grooved at 1" increments beginning approximate 2-1/8" (54 mm) from the base of the tube. Grooves are numbered every 2" (51 mm) and there is a double groove every 8" (203 mm) to help visually identify the desired shelf position during assembly.
- **Stationary Standard Post:** Includes a low density polyethylene post cap, cast zinc alloy post insert and Type 304 Stainless Steel leveling bolt (shoulder bolt with domed head) – all pre-installed.
- **Mobile Post for Stem Caster:** Includes a low density polyethylene post cap pre-installed. Bottom is open to accept a Metro stem caster [with 0.845" (21 mm) diameter stem and c-ring].

Chrome Plated Posts

- **General construction:** All SiteSelect chrome plated posts consist of 1" (25 mm) outside diameter 16 gauge cold rolled steel tubing with chrome plating grooved at 1" increments beginning approximate 2-1/8" (54 mm) from the base of the tube. Grooves are numbered every 2" (51 mm) and there is a double groove every 8" (203 mm) to help visually identify the desired shelf position during assembly.
- **Stationary Standard Post:** Includes a low density polyethylene post cap, cast zinc alloy post insert and zinc plated steel leveling bolt (shoulder bolt with domed head) – all pre-installed.
- **Mobile Post for Stem Caster:** Includes a low density polyethylene post cap pre-installed. Bottom is open to accept a Metro stem caster [with 0.845" (21 mm) diameter stem and c-ring].



SiteSelect Posts feature double grooves every 8" (203mm) to aid assembly.

STATIONARY*				MOBILE				Approx. Pkd. Wt	
Actual Height* (in.)	Actual Height* (mm)	Cat. No. Plated	Cat. No. Stainless	Actual Height* (in.)	Actual Height* (mm)	Cat. No. Plated	Cat. No. Stainless	(lbs.)	(kg)
7.375	187	7P	—	6.75	171	7UP	—	0.5	0.3
14.375	365	13P	13PS	13.75	349	13UP	13UPS	1	0.5
28.375	720	27P	27PS	27.75	704	27UP	27UPS	1.75	0.75
34.375	873	33P	33PS	33.75	857	33UP	33UPS	2	0.9
54.4375	1382	54P	54PS	53.8125	1366	54UP	54UPS	3	1.4
62.4375	1585	63P	63PS	61.8125	1570	63UP	63UPS	3.5	1.6
—	—	—	—	69.75	1771	—	—	3.75	1.7
74.5	1892	74P	74PS	73.875	1876	74UP	74UPS	4	1.8
86.5	2197	86P	86PS	85.875	2181	86UP	86UPS	4.5	2.0
96.5	2450	96P	—	—	—	—	—	5.5	2.5

*Actual height for the stationary post includes the post cap and the leveling bolt completely tightened.



Stationary Post



Post for Stem Caster

Autoclavable/Cart Washable Stainless Steel Post with Aluminum Cap – Mobile, for stem casters

- Autoclavable/cart washable stainless posts consist of 1" (25 mm) outside diameter 18 gauge Type 304 Stainless Steel tubing grooved at 1" increments beginning approximate 2-1/8" (54 mm) from the base of the tube. Grooves are numbered every 2" (51 mm) and there is a double groove every 8" (203 mm) to help visually identify the desired shelf position during assembly. A black anodized aluminum post cap is swaged in place at the top – pre-installed at the factory.



Stainless Post with aluminum cap swaged in place.



Order aluminum split sleeves with stainless "C" rings for corrosive, high-temperature autoclave or cart washing applications.

Model No. **9986S**
One bag required per shelf.

Actual Height (in.)	Actual Height (mm)	Approx. Pkd. Wt (lbs.)	Approx. Pkd. Wt (kg)	Cat. No. Stainless Steel
33.75	857	2	0.9	33UPS-SW
53.8125	1366	3	1.4	54UPS-SW
61.8125	1570	3.5	1.6	63UPS-SW