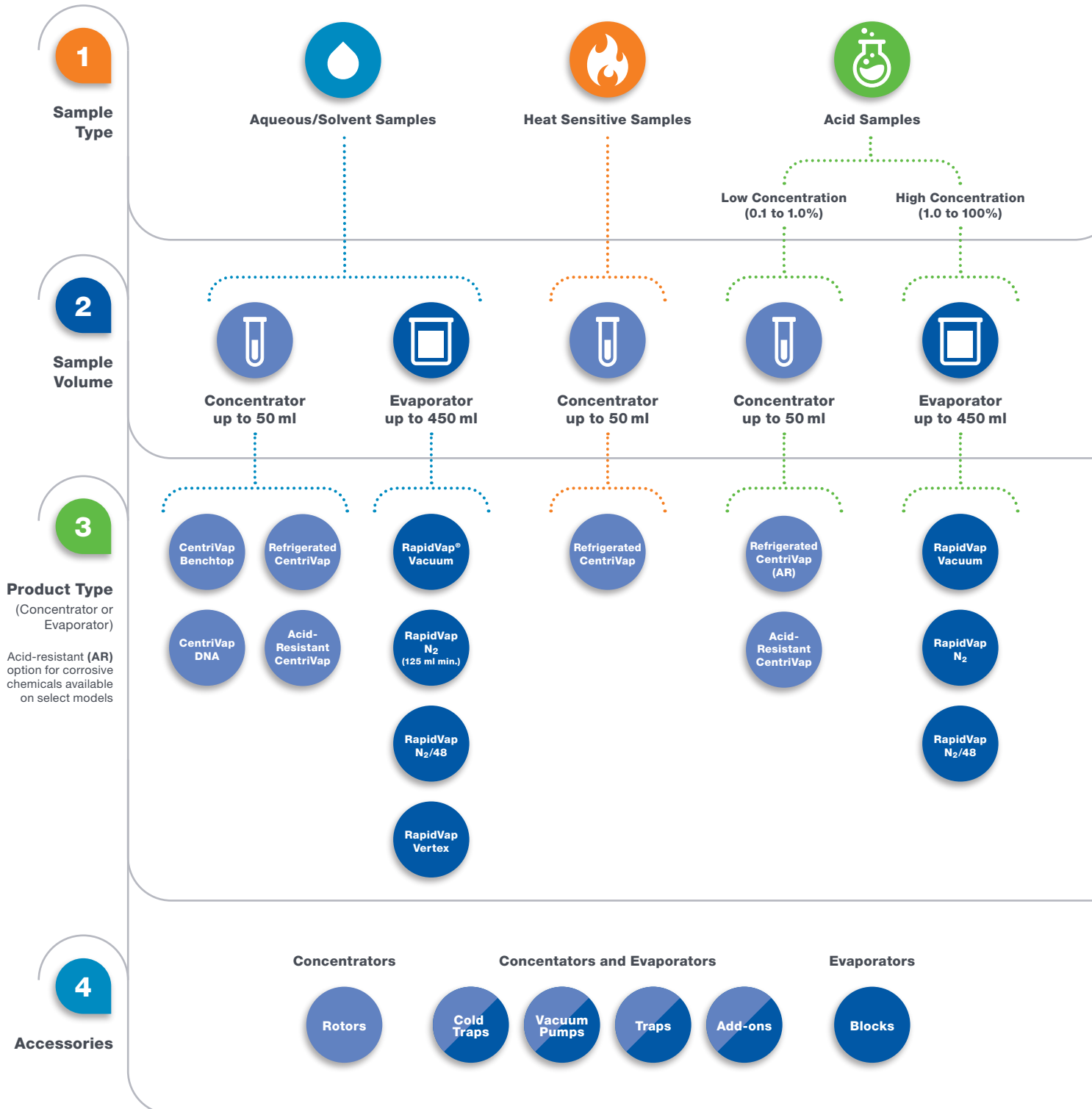


CentriVap® Centrifugal Vacuum Concentrators & Cold Traps



CentriVap® Vacuum Concentrators

Steps to Selecting a Vacuum Concentrator or Evaporator



CentriVap® Vacuum Concentrators

CentriVap and RapidVap® Product Lines

CentriVap Pro Vacuum Concentrators



Benchtop



Acid-Resistant



Refrigerated



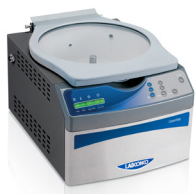
AR



DNA



CentriVap Standard Vacuum Concentrators



Benchtop



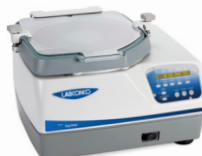
DNA



RapidVap Evaporation Systems



Vertex



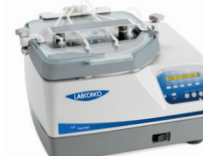
Vacuum



N₂



125 ml min.



N₂/48



Accessories



Rotors



Cold Traps



Vacuum Pumps



Traps



Add-ons



Blocks



Table of Contents

CentriVap® Vacuum Concentrators At-a-glance			
Steps to Selecting a Vacuum Concentrator or Evaporator	2	Cold Traps	16
CentriVap Product Lines	3	Traps and Inserts	18
CentriVap Pro Introduction	5	Standard CentriVap Introduction	19
CentriVap Pro Key Features	6	Standard CentriVap Vacuum Concentrators	20
Refrigerated CentriVap Pro Vacuum Concentrators	8	Standard CentriVap DNA Vacuum Concentrators	21
CentriVap Pro DNA Vacuum Concentrators	9	Standard CentriVap Accessories	
CentriVap Pro Benchtop Vacuum Concentrators	10	Rotors	22
Acid Resistant CentriVap Pro Vacuum Concentrators	11	Additional Accessories	24
CentriVap Pro Accessories		Specifications	
Rotors	12	Refrigerated CentriVap Pro Vacuum Concentrators	25
System Accessories	13	CentriVap Pro DNA Vacuum Concentrators	26
Configuring Your CentriVap System	14	CentriVap Pro Benchtop Vacuum Concentrators	27
Vacuum Pumps and Components	15	Acid Resistant CentriVap Pro Vacuum Concentrators	28
		Cold Traps	29
		Standard CentriVap Vacuum Concentrators	30
		Standard CentriVap DNA Vacuum Concentrators	31



CentriVap® Pro Vacuum Concentrator

Supercharge your laboratory sample workflow with Labconco's newest addition to the CentriVap product lineup. CentriVap Pro Vacuum Concentrators are designed to rapidly concentrate multiple small samples using centrifugal force, vacuum and heat, making them perfect for biology, microbiology, biochemistry, pharmaceutical research and analytical chemistry laboratories. As many as 312 sample tubes

or six standard microtiter plates may be processed at once with rotors that support stacking, and a new suite of smart features make sample processing easier than ever before! With a fully configurable selection of concentrators, cold traps, vacuum pumps and accessories, the CentriVap Pro system is sure to deliver the perfect setup for your lab.

Methods				
Name	Run Time	Last Modified		
Aqueous	∞	Jan 23, 2025		
Aqueous Heat Sensitive	∞	Jan 23, 2025		
Low BP Solvent	∞	Jan 23, 2025		
Low BP Solvent Heat	∞	Jan 23, 2025		
Mixed Solvent	∞	Jan 23, 2025		
Mixed Solvent Heat	∞	Jan 23, 2025		
DMSO	∞	Jan 23, 2025		

NEW VIEW COPY DELETE

Introducing VaporWorks™ OS

The VaporWorks Operating System in your CentriVap Pro Vacuum Concentrator is more than just a touchscreen display. It's a set of powerful controls and useful insights for your lab. VaporWorks gives you greater control over vacuum pressure, run time, chamber temperature, rotor speed, programming, diagnostics, data, and more.

CentriVap® Pro Vacuum Concentrators



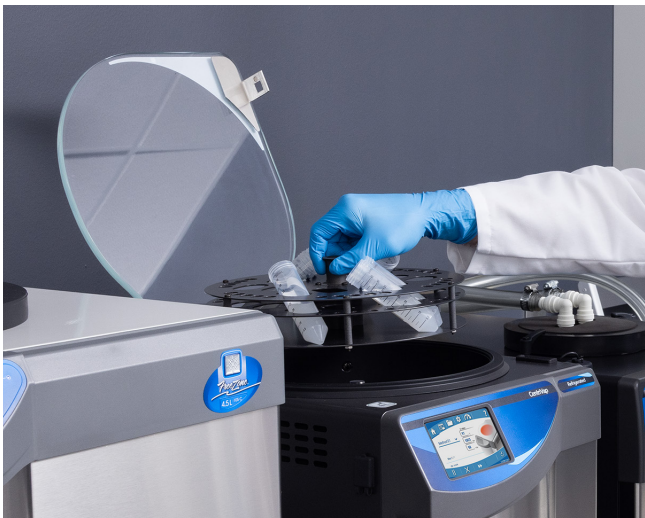
Full Color 5" Touch Screen Display

Touch screen controls allow users to control run parameters, monitor and download data, and edit settings directly from the CentriVap Pro without any external equipment.



Stackable Sample Rotors

Double your sample capacity and process up to 312 sample tubes or six standard microtiter plates per cycle. Stackable configurations available on select rotor styles.



Rotor Imbalance Detection

Protect your instrument with all new rotor imbalance detection designed to alert the user to minor issues and stop the instrument when extreme imbalance is detected.



Versatile System Configurations

Configure the perfect CentriVap Pro system with a diverse selection of concentrators, rotors, cold traps, vacuum pumps, secondary traps, mobile carts and other accessories.

CentriVap® Pro Vacuum Concentrators



Data Collection, Plotting, and Export

Easily view, plot, and export sample run data for analysis and publication directly within the VaporWorks operating system. CSV and PDF file formats supported.



In-Run Visual Sample Monitoring

The CentriZap Pro Strobe Light allows for easy in-run sample monitoring without terminating the program currently in progress.



Ethernet Connectivity

Connect your CentriVap Pro to receive automatic software updates and alerts for sample run data, method parameters and maintenance.



Smart Dry and End Point Assist

Accelerate evaporation by flushing filtered air across samples with new Smart Dry technology and gain valuable insight into sample dryness with End Point Assist.

Refrigerated **CentriVap® Pro** Vacuum Concentrators

Features & Benefits



Perfect for heat-sensitive samples

Process multiple samples such as RNA and proteins, using controlled centrifugal force, vacuum and temperature while ensuring they maintain stability.

Exclusive temperature range

CentriVap Pro is the only available concentrator that combines a refrigeration system that cools to -10 °C with a heater that warms to +100 °C to reach user defined temperatures.

Environmentally friendly natural gas refrigerant

Reduce your laboratory's environmental impact with low global warming potential (GWP), environmentally friendly natural gas refrigerant.

Unlimited user-set programs

Pressure, temperature, rotor speed and run time can be easily set with the touch of a few buttons and stored in the methods menu. User may also alter all run parameters while the program is in progress.

High sample capacity

The large chamber accommodates a variety of rotors including a selection that can be double stacked for added capacity up to 312 sample tubes or 6 microtiter plates per run.

VaporWorks OS

A full suite of advanced smart features puts you in complete control of your samples. Customize run parameters, record and download sample data, set up automated device alerts through Ethernet, and configure device settings on an integrated 5" full color touch screen.

Acid resistant components available on select models

Safely process 0.1 to 1% TFA, hydrochloric acid, acetic acid, hydrobromic acid, ammonium hydroxide and sodium hydroxide.

Pre-programmed methods

Built in methods menu for processing common laboratory sample types. Includes modes for small-scale lyophilization and vacuum desiccation.

Full one year warranty

8 5 2 1

Select the **ACID RESISTANT MATERIALS** of your CentriVap. This is the fourth digit.

1 = Glass lid

2 = Acid resistant bearings, rotor shaft, PTFE chamber, and glass lid

Select the **ELECTRICAL CONFIGURATION** and **OUTLET TYPE** of your CentriVap. These are sixth and seventh digits.

00 = 115V, 60 Hz, with 20A plug for North America

10 = 230V, 60 Hz, with plug for North America

15 = 230V, 60 Hz, with plug for Saudi Arabia

30 = 230V, 50 Hz, with Schuko plug

40 = 230V, 50 Hz, with plug for China/Australia

50 = 230V, 50 Hz, with plug for Great Britain (UK)

70 = 230V, 50 Hz, with plug for India

90 = 230V, 50 Hz, with Schuko, China/Australia, Great Britain (UK) and India



CentriVap® Pro DNA Vacuum Concentrators

Features & Benefits



Compact, efficient design

All-in-one configuration designed to speed evaporation of solvents from DNA samples and other very small samples. Ready for sample processing right out of the box. Stainless Steel DNA Rotor included.

Two integrated glass traps

Protect the vacuum pump and the environment. One is located between the chamber and vacuum pump. The other is located at the pump's exhaust outlet.

Integrated diaphragm pump

Corrosion-resistant. Achieves vacuum of 7 mBar and has a pumping capacity of 38 L/min. The built-in pump is easily removed for service.

Unlimited user-set programs

Pressure, temperature, rotor speed and run time can be easily set with the touch of a few buttons and stored in the methods menu. User may also alter all run parameters while the program is in progress.

High sample capacity

The large chamber accommodates a variety of rotors including a selection that can be double stacked for added capacity up to 312 sample tubes or 6 microtiter plates per run.

VaporWorks OS

A full suite of advanced smart features puts you in complete control of your samples. Customize run parameters, record and download sample data, set up automated device alerts through Ethernet, and configure device settings on an integrated 5" full color touch screen.

DNA rotor included

Accommodates up to 72 each 1.5 ml and 84 each 0.5 ml microcentrifuge tubes.

Pre-programmed methods


Built in methods menu for processing common laboratory sample types.


Full one year warranty


8 5 3 1 1

Select the **ELECTRICAL CONFIGURATION** and **OUTLET TYPE** of your CentriVap. These are sixth and seventh digits.

00 =  115V, 60 Hz, with 20A plug for North America


10 =  230V, 60 Hz, with plug for North America

15 =  230V, 60 Hz, with plug for Saudi Arabia

30 =  230V, 50 Hz, with Schuko plug

40 =  230V, 50 Hz, with plug for China/Australia

50 =  230V, 50 Hz, with plug for Great Britain (UK)

70 =  230V, 50 Hz, with plug for India

90 =  230V, 50 Hz, with Schuko, China/Australia, Great Britain (UK) and India

CentriVap® Pro Vacuum Concentrators

Features & Benefits



Rapidly concentrates multiple samples

CentriVap Pro Vacuum Concentrators are designed to rapidly concentrate multiple small samples using centrifugal force, vacuum and heat within a compact, bench top footprint

Advanced data logging

Easily view, plot, and export sample run data for analysis and publication. CSV and PDF file formats supported.

Rotor imbalance detection

Protects the instrument by notifying users of potential rotor balance issues. Alerts the user to minor issues and stops the instrument when extreme imbalance is detected.

Unlimited user-set programs

Pressure, temperature, rotor speed and run time can be easily set with the touch of a few buttons and stored in the methods menu. User may also alter all run parameters while the program is in progress.

High sample capacity

The large chamber accommodates a variety of rotors including a selection that can be double stacked for added capacity up to 312 sample tubes or 6 microtiter plates per run.

VaporWorks OS

A full suite of advanced smart features puts you in complete control of your samples. Customize run parameters, record and download sample data, set up automated device alerts through Ethernet, and configure device settings on an integrated 5" full color touch screen.

Optional heat boost

Additional 300W Heat Boost speeds chamber heating for faster sample processing and increased performance.

Pre-programmed methods

Built in methods menu for processing common laboratory sample types. Includes modes for small-scale lyophilization and vacuum desiccation.

Full one year warranty

8 5 1 1

Select the **HEATING CAPACITY** of your CentriVap. This is the fifth digit.

- 1 = Standard 300W heater (ambient to 100 °C)
- 2 = Standard 300W heater and additional 300W Heat Boost for faster evaporation

Select the **ELECTRICAL CONFIGURATION** and **OUTLET TYPE** of your CentriVap. These are sixth and seventh digits.

- 00 = 115V, 60 Hz, with 20A plug for North America
- 10 = 230V, 60 Hz, with plug for North America

- 15 = 230V, 60 Hz, with plug for Saudi Arabia
- 30 = 230V, 50 Hz, with Schuko plug
- 40 = 230V, 50 Hz, with plug for China/Australia
- 50 = 230V, 50 Hz, with plug for Great Britain (UK)
- 70 = 230V, 50 Hz, with plug for India
- 90 = 230V, 50 Hz, with Schuko, China/Australia, Great Britain (UK) and India



Acid-Resistant **CentriVap® Pro** Vacuum Concentrators

Features & Benefits



Rapidly concentrates multiple samples with corrosive chemicals

Safely process 0.1 to 1% TFA, hydrochloric acid, acetic acid, hydrobromic acid, ammonium hydroxide and sodium hydroxide.

Durable acid-resistant components

Aluminum chamber is PTFE-coated. Glass lid and other components in the vapor path are constructed of acid-resistant materials for long life.

Rotor imbalance detection

Protects the instrument by alerting users of potential rotor balance issues. Alerts the user to minor issues and stops the instrument when extreme imbalance is detected.

Unlimited user-set programs

Pressure, temperature, rotor speed and run time can be easily set with the touch of a few buttons and stored in the methods menu. User may also alter all run parameters while the program is in progress.

High sample capacity

The large chamber accommodates a variety of rotors including a selection that can be double stacked for added capacity up to 312 sample tubes or 6 microtiter plates per run.

VaporWorks OS

A full suite of advanced smart features puts you in complete control of your samples. Customize run parameters, record and download sample data, set up automated device alerts through Ethernet, and configure device settings on an integrated 5" full color touch screen.

Optional heat boost

Additional 300W Heat Boost speeds chamber heating for faster sample processing and increased performance.

Pre-programmed methods

Built in methods menu for processing common laboratory sample types. Includes modes for small-scale lyophilization and vacuum desiccation.

Full one year warranty

8 5 1 2

Select the **HEATING CAPACITY** of your CentriVap. This is the fifth digit.

- 1** = Standard (ambient to 100 °C)
- 2** = 300W Heat Boost

Select the **ELECTRICAL CONFIGURATION** and **OUTLET TYPE** of your CentriVap. These are sixth and seventh digits.

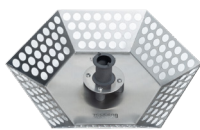
- 00** = 115V, 60 Hz, with 20A plug for North America
- 10** = 230V, 60 Hz, with plug for North America

- 15** = 230V, 60 Hz, with plug for Saudi Arabia
- 30** = 230V, 50 Hz, with Schuko plug
- 40** = 230V, 50 Hz, with plug for China/Australia
- 50** = 230V, 50 Hz, with plug for Great Britain (UK)
- 70** = 230V, 50 Hz, with plug for India
- 90** = 230V, 50 Hz, with Schuko, China/Australia, Great Britain (UK) and India



CentriVap® Pro Accessories

Rotors



7555600



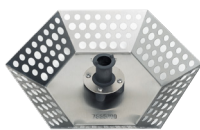
7555300



7551500



7555400



7555700



7555500



7556500

Metal Rotors for Tubes. Rotors hold tubes at an angle to maximize surface area. Depending on the rotor, made of stainless steel or PTFE-coated metal with polypropylene hub. Easily interchangeable. The DNA Rotor (7555700) is included with each CentriVap Pro DNA Concentrator. Hexagonal, DNA, High Capacity Micro, and 15 x 45 mm rotors support double stacking within the CentriVap Pro chamber. **Sample containers are not included.** Shipping weight 2.5 lbs. (1.1 kg)

Rotor Type	Catalog Number		Number of Holes	Number of Tubes*	Tube Volume**	Tube Description				
	Aluminum	PTFE-coated								
Hexagonal	7555600	7555601	156	156	1.5 ml	1.5 ml microcentrifuge tubes				
				156	2 ml	2 ml microcentrifuge tubes				
12-17 mm	7555300	7555301	52	52	2 ml	12.2 x 46.5 mm				
				52	5 ml	13 x 51 mm				
				44	3 ml	12 x 55 mm				
				36	5-6 ml	12 x 75 mm				
				36	5-6 ml	12 x 95 mm				
				36	6 ml	13 x 75 mm				
				36	10 ml	13 x 100 mm				
				24	11-15 ml	16 x 100 mm				
				24	5 ml	5 ml microcentrifuge tubes				
				18	15-19 ml	16 x 125 mm				
12-13 mm	7551500	7551501	40	40	1.5 ml	1.5 ml microcentrifuge tubes				
				40	2 ml	2 ml microcentrifuge tubes				
				108	16	3 ml	12 x 55 mm			
				100†	5 ml	12 x 75 mm				
				64	5 ml	12 x 95 mm				
				100†	6 ml	13 x 75 mm				
				64	10 ml	13 x 100 mm				
				28 mm	7555400	7555401	30	30	1.5 ml	1.5 ml microcentrifuge tubes
								30	2 ml	2 ml microcentrifuge tubes
							12	12	40-50 ml	28 x 115 mm
				12	40-50 ml	28 x 135 mm				
				12	50 ml	28 x 140 mm				
DNA	7555700	7555701	84	84	0.5 ml	0.5 ml microcentrifuge tubes				
				72	1.5 ml	1.5 ml microcentrifuge tubes				
				72	2 ml	2 ml microcentrifuge tubes				
High Capacity Micro	7555500	7555501	148	148	1.5-2 ml	1.5 or 2 ml autosampler vials, approximately 12 mm x 35 mm				
15 x 45 mm	7556500	7556501	72	72	1.5-2 ml	15 x 45 mm				

* Rotors do not necessarily hold all the tubes described simultaneously.

** Tubes should be filled no more than 1/3 to 1/2 of tube volume to prevent loss of sample during rotation.

† Rotor holds a maximum of 92 each 12 or 13 x 75 mm tubes when 16 each 12 x 55 mm tubes are also loaded.

CentriVap® Pro Accessories

Rotors and System Accessories



7555800



7555900

Microtiter Plate Rotors. Depending on the rotor, made of stainless steel or PTFE-coated metal with polypropylene hub. Easily interchangeable. **Microtiter Plates are not included.** Shipping weight 2.5 lbs. (1.1 kg)

Rotor Type	Catalog Number		Capacity	Plate Description
	Aluminum	PTFE-coated		
4-Place Microtiter Plate	7555800	7555801	4	standard microtiter plates
			2	deep well microtiter plates
6-Place Microtiter Plate	7555900	7555901	6	standard microtiter plates
			3	deep well microtiter plates

Metal Rotors for Pear-Shaped Flasks. Depending on the rotor, made of anodized aluminum or PTFE-coated metal with polypropylene hub. Easily interchangeable. **Flasks are not included.** Shipping weight 2.5 lbs. (1.1 kg)



Rotor Type	Catalog Number		Number of Holes	Number of Flasks
	Aluminum	PTFE-coated		
Rotor for use with 100 ml* Pear-shaped Flasks	7556600	7556601	8	8

*Containers should be filled no more than 1/3 to 1/2 of total volume to prevent loss of sample during rotation.



8547200 - CentriZap Pro Strobe Light. For use with Labconco CentriVap Pro Vacuum Concentrators. The CentriZap Pro Strobe Light enables users to view samples as if they were stationary while rotor is spinning, eliminating the need to pause a cycle to check sample volume. Includes mounting holster and hardware for attachment to the right side of the CentriVap Pro Vacuum Concentrator. Shipping weight 2.0 lbs. (0.9 kg)



8544000 - CentriVap Cart. For use with Labconco CentriVap Pro and CentriVap Standard Vacuum Concentrator Systems. Powder-coated steel cart supports CentriVap Vacuum Concentrators, CentriVap Cold Traps, and vacuum pumps during use, storage, and transportation. Ergonomic design allows for easy access to all key components of the system. Shipping weight 132.0 lbs. (59.9 kg)

CentriVap® Pro Concentrator Systems

Configuring Your CentriVap System

Choosing the right configuration for your CentriVap Pro Vacuum Concentrator is paramount for optimizing your laboratory's concentration process and ensures efficient solvent removal, sample throughput, and ease of use. Selecting compatible components, such as the appropriate vacuum pump and cold trap, directly impacts the speed and effectiveness of the concentration process. Mismatched components can lead to compromised results, extended run times, or even damage to sensitive samples. Thankfully, Labconco offers a range of options and accessories to configure your CentriVap Pro to meet your unique laboratory needs.

Step 1

Choose your CentriVap and sample rotors

Select your concentrator model, acid resistant options, and sample rotors suited to your laboratory application(s). Ensure sample rotors correspond to the correct concentrator model.

Step 2

Choose your cold trap

Select your Cold Trap model and temperature based on solvent(s) used within your lab's sample workflows.

Step 3

Choose your vacuum pump

Select your Vacuum Pump style, displacement, voltage, and chemical resistance based on application needs. Ensure you are selecting a rotary vane pump for applications requiring a deeper vacuum level.

Step 4

Choose your accessories

Perfect your setup by adding a CentriVap Cart, CentriZap Strobe Light, secondary trap, Cold Trap insert, or Cold Trap manifold to your system configuration.



Accessories

Vacuum Components



Diaphragm Vacuum Pumps. The wetted parts of these pumps are PTFE or other fluoropolymers for corrosion resistance. Vacuum outlet is 1/2" OD.

Solvents used: **aqueous and high boiling point, volatile and low boiling point, and combination of solvents**

Catalog Number	Electrical Configuration	Vacuum (mBar)	Displacement L/min	Shipping Weight
7393000	115V, 60 Hz, 3.5A	1.5	63	40 lbs. (18 kg)
7393001*	230V, 50/60 Hz, 2A	1.5	56/63**	40 lbs. (18 kg)
7359020	115V, 50/60 Hz, 3.5A	7	33/38**	38 lbs. (17 kg)
7359030*	230V, 50/60 Hz, 2A	7	33/38**	38 lbs. (17 kg)

* International electrical configuration ** Displacement at 50/60 Hz



Rotary Vane Direct Drive Vacuum Pumps. These pumps are two-stage and oil-sealed with gas ballast control. Isolation valve seals the inlet to prevent oil and air contamination of the system in the event of power failure. Oil mist exhaust filter, vacuum pump oil and inlet adapters suitable for 1/2" OD and 3/4" OD are provided.

Solvents used: **aqueous and high boiling point**

Catalog Number	Electrical Configuration	Ultimate Vacuum (Partial Pressure) (mBar)	Displacement at 60 Hz L/min	Shipping Weight
1472100	115V, 50/60 Hz, 4.6A	2×10^{-3}	117	62 lbs. (28 kg)
7739402*	230V, 50/60 Hz, 2.4A	2×10^{-3}	117	65 lbs. (30 kg)

* International electrical configuration



7991000—Vacuum Controller. Provides manual control and monitoring of vacuum levels. Analog gauge shows vacuum from 0-30" Hg. At the end of concentration, the control valve may be opened to break the vacuum. **For use with Diaphragm Vacuum Pumps only.** Shipping weight 3.0 lbs. (1.4 kg)



7474000—Three-Way Valve. Allows connection of other laboratory equipment to CentriVap System. Polypropylene, 0.5" OD. Shipping weight 0.5 lb. (0.25 kg)

7814300—Bleed Valve. Bleeds vacuum manually when using the Cold Trap with other laboratory equipment. Shipping weight 0.5 lb. (0.25 kg)

7814500—Vacuum Tubing Kit. Two each 1/2" ID vacuum tubing, 48" length, and 4 tubing clamps. Shipping weight 6.0 lbs. (2.7 kg)

⚠ WARNING: Cancer — P65Warnings.ca.gov (California only)

CentriVap® Cold Traps

Features & Benefits



An integral part of every CentriVap system

Cold traps protect the vacuum pump by trapping moisture, vapors and corrosive fumes as they evaporate from the samples. Three collector temperatures are offered: -50° C, -84° C and -105° C; selection should be based on the freezing point of solvents being trapped.

Eco-Cool™ refrigerant

Reduce your laboratory's environmental impact with environmentally friendly natural gas refrigerant available on select models.

HCFC/CFC-free refrigeration system

The -50° C Cold Traps have a high capacity 1/3 hp compressor to lower cold trap temperature to -50° C (-58° F) in less than 30 minutes and accelerate start up procedures. The -84° C Cold Traps have two compressors to lower cold trap temperature to -84° C (-119° F) in less than 40 minutes. The -105° C Cold Traps have two compressors to lower cold trap temperature to -105° C (-157° F) in less than 40 minutes.

Temperature graph

Displays relative collector coil temperature. Green LED lights indicate conditions are right for beginning a process.

Stainless steel collector

Holds up to four liters of liquid and accommodates an optional Glass Insert 7397605 for use with corrosives.

Corrosion-resistant collector drain

Corrosion-resistant polypropylene valve and stainless steel plumbing speed clean up and eliminate need for glass insert with non-corrosives.

Acrylic or stainless steel lid

Has two Quick-Disconnect fittings for 1/2" ID hose for connecting the Cold Trap and Concentrator. Lid is acrylic or stainless steel on -50° C Cold Traps and stainless steel on -84° C and -105° C Cold Traps.

Optional secondary chemical traps

Trap Inserts for removing acids, moisture, radiochemicals and solvents minimize release of contaminants into the atmosphere.

Full one year warranty



CentriVap® Cold Traps

Ordering Information

CentriVap Cold Traps are critical components designed to collect evaporated liquid from CentriVap Vacuum Concentrators. Condensing and trapping volatile solvents protects the vacuum pump and the laboratory environment from the harmful effects of vapors, fumes and corrosives while also ensuring the solvents can be easily collected for analysis or disposal. The CentriVap Cold Trap is available as an integral component within configured CentriVap concentration systems or separately for a wide range of laboratory applications such as freeze drying and desiccation.

CentriVap Cold Traps are available in -50° C, -84° C, and -105° C collector temperatures to support a wide range of solvent types.



CentriVap -50° C Cold Trap



CentriVap -84° C Cold Trap



CentriVap -105° C Cold Trap

8 6 1

Select the **REFRIGERATION TEMPERATURE** of your Cold Trap. This is the third digit.

- 0** = -50 °C (-58 °F). For samples containing water.
- 1** = -84 °C (-119 °F). For low eutectic point samples containing water or acetonitrile.
- 2** = -105 °C (-157 °F). For low eutectic point samples containing water, acetonitrile or dilute methanol or ethanol.

Select the **LID MATERIAL** and **REFRIGERANT GAS** of your Cold Trap. This is the fifth digit.

- 0** = Acrylic lid, standard refrigerant (-50 °C models only)
- 1** = Stainless steel lid, standard refrigerant
- 5** = Acrylic lid, Eco-Cool (-50 °C models ending in -30,-50, and -90 only)
- 6** = Stainless steel lid, Eco-Cool (models ending in -30,-50, and -90 only)

Select the **ELECTRICAL CONFIGURATION** and **OUTLET TYPE** of your CentriVap. These are sixth and seventh digits.

- 00** = 115V, 60 Hz, with 20A plug for North America
- 10** = 230V, 60 Hz, with plug for North America
- 15** = 230V, 60 Hz, with plug for Saudi Arabia
- 30** = 230V, 50 Hz, with Schuko plug
- 40** = 230V, 50 Hz, with plug for China/Australia
- 50** = 230V, 50 Hz, with plug for Great Britain (UK)
- 70** = 230V, 50 Hz, with plug for India
- 90** = 230V, 50 Hz, with Schuko, China/Australia, Great Britain (UK) and India

Accessories

Traps & Inserts



Chemical Trap. Traps are connected between the cold trap and the accessory vacuum pump to provide additional protection to the vacuum pump.

7460900—Clear Polypropylene Canister with mounting bracket. Attaches to the CentriVap Cold Trap. Includes 17" PVC tubing and two clamps. Accommodates any trap insert listed below. Shipping weight 5.0 lbs. (2.3 kg)

⚠ WARNING: Cancer—P65Warnings.ca.gov (California only)

7815300—Clear Polypropylene Canister with stand. Recommended when more than one chemical trap is required. Accommodates any trap insert listed below. Shipping Weight 5.0 lbs. (2.3 kg)



Trap Inserts. Shipping weight 4.0 lb. (1.8 kg)

7814800—Acid. Contains acid neutralizing desiccant which changes from off-white to purple when exhausted.

7814900—Moisture. Contains desiccant which changes from blue to pink when exhausted.

7815000—Radioisotope. Contains activated carbon.

7815200—Solvent. Contains molecular sieve.

7995600—Ammonia. Contains impregnated carbon.



7397605—Glass Trap. Protects CentriVap Cold Trap reservoir and lid from corrosives. Included with CentriVap Acid Systems. Not compatible with pre-2005 Cold Traps or Mobile Systems. Shipping weight 4.0 lbs. (1.8 kg)



7386700—Stainless Steel Lid. May be installed in place of the acrylic lid on -50° C CentriVap Cold Trap when applications involve solvents which attack acrylic. Included on CentriVap Solvent and Proteomic Systems and -84° C and -105° C CentriVap Cold Traps. Shipping weight 8.0 lbs. (3.6 kg)



7397700—Two-Port Manifold. Has neoprene rubber valves to allow freeze drying of small volume samples in freeze dry flasks, serum bottles or ampules. Connects to CentriVap Cold Trap, Ultra-Low Cold Trap or Mobile System. **Requires use of Rotary Vane Pump.** Not compatible with pre-2005 Cold Traps or Mobile Systems. Shipping weight 1.0 lb. (0.5 kg)

Standard CentriVap® Concentrator

Standard CentriVap Vacuum Concentrators use a combination of centrifugal force, vacuum and heat to speed laboratory evaporation of multiple small samples, making them perfect for biology, microbiology, biochemistry, pharmaceutical research and analytical chemistry laboratories. These laboratory evaporators can process as many as 148 samples at once with sample sizes ranging from a few microliters up to 50 milliliters.



An easy-to-read LCD display prompts the user to set program parameters and displays program number, actual and set point temperatures, heat time remaining, and run time remaining. Heat and run times are set separately, each from 1 to 999 minutes, and internal memory can store up to 9 user-set programs with parameters of temperature, heat time and run time.



Program

LCD shows program from 1 to 9, R for run.

Temperature

LCD shows heat from OFF to 99° C or HI (100° C).

Quick-Start™ Buttons

Initiate user-set Program 1, 2 or 3 with a single push of a button.

Preheat Button

Press to turn on heater to preheat chamber prior to loading samples.

Standard CentriVap® Vacuum Concentrators

Features & Benefits



Rapidly concentrate samples

Utilizes centrifugal force, vacuum and heat.

Heat and run times are set separately

Each from 1 to 999 minutes. Heat may be programmed to shut down sooner than the run to protect heat-sensitive samples from excessive heat exposure after the solvent has evaporated. Once user-set run time has expired, all functions cease.

Large chamber holds up to 148 samples for maximum throughput

The 12" diameter chamber accommodates a variety of rotors. The 6-Place Microtiter Plate Rotor holds six standard 96-well plates or three deep well plates.

Stores 9 user-set programs

Parameters of temperature, heat time and run time can be easily set with the touch of a few buttons. User may also alter temperature and times while the program is in progress.

Quick-Start™






One Button Start Up

Start the rotor, heater, timers and vacuum pump simultaneously.

Quick-Stop™ System

Once run time has expired or the RUN/STOP button is pressed, within seconds the vacuum pump stops, the valve opens to bleed air into the chamber, and the rotor stops.

Full one year warranty

Catalog Number	Electrical Requirements	Receptacle & Plug Type	Overall Dimensions (w x d x h)	Shipping Weight
7810010	115V, 50/60 Hz, 12A*	 North America, 115V, 15A	14.7" x 19.3" x 11.7"	48 lbs. (22 kg)
7810011	230V, 50/60 Hz, 6A**	 North America, 230V	14.7" x 19.3" x 11.7"	48 lbs. (22 kg)
7810030	230V, 50/60 Hz, 6A**	 Schuko	14.7" x 19.3" x 11.7"	48 lbs. (22 kg)
7810034	230V, 50/60 Hz, 6A**	 British (UK)	14.7" x 19.3" x 11.7"	48 lbs. (22 kg)
7810038	230V, 50/60 Hz, 6A**	 China/Australia	14.7" x 19.3" x 11.7"	48 lbs. (22 kg)

All models require (not included):

- Vacuum Pump
- CentriVap Cold Trap
- Rotor
- Sample tubes

*System amperage shown includes 8 amp maximum vacuum pump rating. **System amperage shown includes 4.5 amp maximum vacuum pump rating.

Standard CentriVap® DNA Vacuum Concentrators

Features & Benefits



Compact, efficient design

Speeds evaporation of solvents from DNA samples and other very small samples.

Two 177 milliliter glass traps

Protect the vacuum pump and the environment. One is located between the chamber and vacuum pump. The other is located at the pump's exhaust outlet.

Integrated diaphragm pump

Corrosion-resistant. Achieves vacuum of 7 mBar and has a pumping capacity of 38 L/min. The built-in pump is easily removed for service.

Large chamber holds up to 148 samples for greater throughput

The 12" diameter chamber accommodates a variety of rotors. The 6-Place Microtiter Plate Rotor holds six standard 96-well plates or three deep well plates.

Stores 9 user-set programs

Parameters of temperature, heat time and run time can be easily set with the touch of a few buttons. User may also alter temperature and times while the program is in progress.

Quick-Start™

One Button Start Up

Start the rotor, heater, timers and vacuum pump simultaneously.

Quick-Stop™ System

Once run time has expired or the RUN/STOP button is pressed, within seconds the vacuum pump stops, the valve opens to bleed air into the chamber, and the rotor stops.

Versatile DNA Rotor

Accommodates up to 60 each 1.5 ml and 72 each 0.5 ml microcentrifuge tubes.

Full one year warranty

Catalog Number	Electrical Requirements	Receptacle & Plug Type	Overall Dimensions (w x d x h)	Shipping Weight
7970010	115V, 60 Hz, 12A	North America, 115V, 15A	15.1" x 28.5" x 11.2"	100 lbs. (45 kg)
7970011	230V, 50/60 Hz, 6A	North America, 230V	15.1" x 28.5" x 11.2"	100 lbs. (45 kg)
7970030	230V, 50/60 Hz, 6A	Schuko	15.1" x 28.5" x 11.2"	100 lbs. (45 kg)
7970035	230V, 50/60 Hz, 6A	British (UK)	15.1" x 28.5" x 11.2"	100 lbs. (45 kg)
7970037	230V, 50/60 Hz, 6A	China/Australia	15.1" x 28.5" x 11.2"	100 lbs. (45 kg)

All models require (not included):

- Sample tubes. Contact your laboratory supply dealer.

Accessories

Rotors



7450700



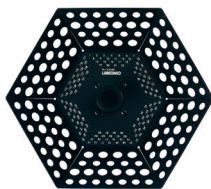
7455000



7455100



7455200



7462900



7553500

Metal Rotors for Tubes. Rotors hold tubes at an angle to maximize surface area. Depending on the rotor, made of anodized aluminum or PTFE-coated metal with polypropylene hub. Easily interchangeable. The DNA Rotor 7462900 is included with each CentriVap DNA Concentrator. Sample containers are not included. Shipping weight 2.5 lbs. (1.1 kg)

Rotor Type	Catalog Number		Number of Holes	Number of Tubes*	Tube Volume**	Tube Description	
	Aluminum	PTFE-coated					
Hexagonal	7450700	7450701	132	132	1.5 ml	1.5 ml microcentrifuge tubes	
				132	2 ml	2 ml microcentrifuge tubes	
12-17 mm	7455000	7455001	52	52	2 ml	12.2 x 46.5 mm	
				52	5 ml	13 x 51 mm	
				44	3 ml	12 x 55 mm	
				36	5-6 ml	12 x 75 mm	
				36	5-6 ml	12 x 95 mm	
				36	6 ml	13 x 75 mm	
				36	10 ml	13 x 100 mm	
				24	11-15 ml	16 x 100 mm	
				24	5 ml	5 ml microcentrifuge tubes	
				18	15-19 ml	16 x 125 mm	
12-13 mm	7455100	7455101	40	40	1.5 ml	1.5 ml microcentrifuge tubes	
				40	2 ml	2 ml microcentrifuge tubes	
				108	16	3 ml	12 x 55 mm
				100†	5 ml	12 x 75 mm	
				64	5 ml	12 x 95 mm	
				100†	6 ml	13 x 75 mm	
28 mm	7455200	7455201	32	32	1.5 ml	1.5 ml microcentrifuge tubes	
				32	2 ml	2 ml microcentrifuge tubes	
				12	12	40-50 ml	28 x 115 mm
				12	40-50 ml	28 x 135 mm	
				12	50 ml	28 x 140 mm	
DNA	7462900	7462901	72	72	0.5 ml	0.5 ml microcentrifuge tubes	
			60	60	1.5 ml	1.5 ml microcentrifuge tubes	
			60	60	2 ml	2 ml microcentrifuge tubes	
High Capacity Micro	7553500	7553501	148	148	1.5-2 ml	1.5 or 2 ml autosampler vials, approximately 12 mm x 35 mm	

* Rotors do not necessarily hold all the tubes described simultaneously.

** Tubes should be filled no more than 1/3 to 1/2 of tube volume to prevent loss of sample during rotation.

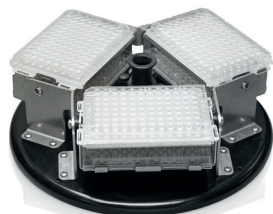
† Rotor holds a maximum of 92 each 12 or 13 x 75 mm tubes when 16 each 12 x 55 mm tubes are also loaded.

Accessories

Rotors



7461900



7553000

Microtiter Plate Rotors. Depending on the rotor, made of anodized aluminum or PTFE-coated metal with polypropylene hub. Easily interchangeable. **Microtiter Plates are not included.** Shipping weight 2.5 lbs. (1.1 kg)

Rotor Type	Catalog Number		Capacity	Plate Description
	Aluminum	PTFE-coated		
4-Place Microtiter Plate	7461900	7461901	4	standard microtiter plates
			2	deep well microtiter plates
6-Place Microtiter Plate	7553000	7553001	6	standard microtiter plates
			3	deep well microtiter plates

Acid-Resistant Thermoplastic Rotors. Thermoplastic rotors hold tubes at an angle to maximize surface area. Easily interchangeable. **Sample containers are not included.** Shipping weight 3.0 lbs. (1.4 kg)



7824702

Rotor Type	Catalog Number	Number of Holes	Number of Tubes	Container Volume*	Tube Description
12 x 32 mm	7824700	66	66	2 ml	auto sample vials, 12 x 32 mm
15 x 45 mm	7824702	56	56	4 ml	auto sample vials, 15 x 45 mm

*Containers should be filled no more than 1/3 to 1/2 of total volume to prevent loss of sample during rotation.

Metal Rotors for Pear-Shaped Flasks. Depending on the rotor, made of anodized aluminum or PTFE-coated metal with polypropylene hub. Easily interchangeable. **Flasks are not included.** Shipping weight 2.5 lbs. (1.1 kg)



Rotor Type	Catalog Number		Number of Holes	Number of Flasks
	Aluminum	PTFE-coated		
Rotor for use with 100 ml* Pear-shaped Flasks	7553100	7553101	8	8

*Containers should be filled no more than 1/3 to 1/2 of total volume to prevent loss of sample during rotation.

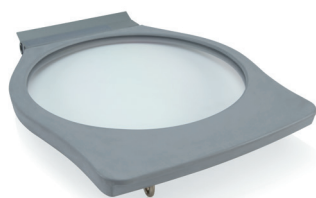


7551600—100 ml Pear-Shaped Flask. Borosilicate glass 100 milliliter flask with 19/22 STJ. Shipping weight 0.5 lb. (0.2 kg)

Accessories



7464300—CentriZap™ Standard Strobe Light. Enables user to shine a strobe light into the Standard CentriVap's chamber to easily view samples while the rotor is spinning. Includes mounting holster and hardware for attachment to the right side of the Standard CentriVap. Shipping weight 2.0 lbs. (0.9 kg)



7456600—Standard CentriVap Glass Lid. May be installed in place of the acrylic lid on the Standard CentriVap Concentrator when applications involve solvents which attack acrylic. Shipping weight 8.0 lbs. (3.6 kg)



8544000 - CentriVap Cart. For use with Labconco CentriVap Pro and CentriVap Standard Vacuum Concentrator Systems. Powder-coated steel cart supports CentriVap Vacuum Concentrators, CentriVap Cold Traps, and vacuum pumps during use, storage, and transportation. Ergonomic design allows for easy access to all key components of the system. Shipping weight 132.0 lbs. (59.9 kg)



8060000 - Mobile Bench. Provides auxiliary bench space and transports equipment from lab to lab. Supports loads up to 540 pounds and features 5" diameter, nonmarking polyurethane casters with toe locks; ready-to-roll, full factory assembly; durable glacier white, epoxy-coated 18 gauge welded tubular steel frame; lifetime guarantee. Dimensions: 48.0" l x 24.0" w x 37.2" h (121.9 x 61 x 94.5 cm) Shipping weight 105 lbs. (48 kg)



8075000 - Vairable Height Mobile Bench. Provides auxiliary bench space and transports equipment from lab to lab. Four adjustable heights range from 29.63" to 37.38" using steel pins with nuts inserted in vertical frame members. Supports loads up to 540 pounds and features 5" diameter, non-marking polyurethane casters with toe locks; ready-to-roll, full factory assembly; durable glacier white, epoxy-coated 18 gauge welded tubular steel frame; lifetime guarantee. Dimensions: 38.0" l x 28.0" w x 27.7" h (96.5 x 71.1 x 70.4 cm) Shipping weight 105 lbs. (48 kg)

Refrigerated **CentriVap**[®] Pro Vacuum Concentrator

Specifications

All models feature:

- * HCFC/CFC-free natural gas refrigeration system to cool chamber to -10° C
- * Real time chamber temperature monitoring and control from -10° C to +100° C
- * VaporWorks™ OS for customization and storage of run parameters, data monitoring and output and device diagnostics
- * 5" full color touchscreen display
- * In-run and programmed parameter changes for full manipulation of rotor speed, chamber temperature, chamber preheat, run time and vacuum pressure
- * Pre-programmed menu of methods for a wide variety of sample types
- * Desiccant mode for vacuum desiccation of samples and Lyo-mode for small scale benchtop lyophilization when combined with a rotary vane vacuum pump and Cold Trap
- * End point assist aids in determining dryness on select sample volumes and temperatures
- * Ethernet connectivity for automated alerts about sample run data, method parameters, maintenance, and software updates
- Automatic vacuum release valve
- Built-in vacuum delay allows rotor to achieve speed before applying vacuum
- Audible alarm to signal completion of set point run time
- Solvent resistant glass lid
- Lid latch with safety sensor
- Phenol-free lid gasket
- Powder-coated aluminum chamber or PTFE-coated aluminum chamber with Hastelloy* shaft, depending on the model
- * Centrifugal motion provided by a brushless motor featuring customizable rotor speed from 500 to 1800 RPM
- 300-watt chamber heater speeds evaporation
- * Brushed stainless steel and charcoal, powder-coated steel exterior with blue accents
- 1/2" OD polypropylene hose fitting for connection to vacuum tubing. Vacuum pump is not included
- * Vacuum port with quick disconnect fitting for 1/4" ID tubing
- Electrical receptacle on the back for connection to an accessory vacuum pump
- One year warranty on materials and workmanship
- Overall dimensions: 15" w x 27.2" d x 13.9" h
- Actual weight 90 lbs. (41 kg). Shipping weight 164 lbs. (74 kg)

Standards conformance & regulations:

- UL Standard 61010-1 (115V, 60 Hz models)
- CAN/CSA C22.2 No. 61010-1 (115V, 60 Hz models)
- CE Conformity marking (230V, 50/60 Hz models)
- ⚠ **WARNING:** Cancer — P65Warnings.ca.gov (California only)

Options include:

- Acid-Resistant, PTFE-coated aluminum chamber with Hastelloy* shaft
- Standard voltage and frequency configurations
 - 115V, 60 Hz, 7.25A
 - 230V, 60 Hz, 3.60A
 - 230V, 50 Hz, 3.60A
- Region-specific electrical plug configurations

All models require (not included):

- Vacuum Pump
- CentriVap Cold Trap
- Rotor(s)
- Sample tubes. Contact your laboratory supply dealer

Optional accessories:

- CentriZap™ Pro Strobe Light
- CentriVap Cart
- Secondary Trap

*Hastelloy® is a registered trademark of Haynes International, Inc.

- * Labconco exclusive feature



CentriVap[®] Pro DNA Vacuum Concentrators

Specifications

All models feature:

- * VaporWorks™ OS for customization and storage of run parameters, data monitoring and output and device diagnostics
- * 5" full color touchscreen display
- * In-run and programmed parameter changes for full manipulation of rotor speed, chamber temperature from off to 100° C, chamber preheat, run time and vacuum pressure
- * Pre-programmed menu of methods for a wide variety of sample types
- * End point assist aids in determining dryness on select sample volumes and temperatures
- * Ethernet connectivity for automated alerts about sample run data, method parameters, maintenance, and software updates
- Built-in diaphragm pump achieves vacuum of 7 mBar and has displacement capacity of 38 L/min. All wetted parts are PTFE or other chemical-resistant fluoropolymers
- Automatic vacuum release valve
- Built-in vacuum delay allows rotor to achieve speed before applying vacuum
- Audible alarm to signal completion of set point run time
- Solvent resistant glass lid
- Lid latch with safety sensor
- Phenol-free lid gasket
- Powder-coated aluminum chamber
- * Two integrated glass traps with 1/2" OD polypropylene hose fitting for connection to vacuum tubing
- * Centrifugal motion provided by a brushless motor featuring customizable rotor speed from 500 to 1800 RPM
- * 300-watt chamber heater speeds evaporation
- * Brushed stainless steel and charcoal, powder-coated steel exterior with blue accents
- Vacuum port with quick disconnect fitting for 1/4" ID tubing
- Includes stainless steel DNA Rotor 7555700. Accommodates up to 72 each 1.5 ml and 84 each 0.5 ml microcentrifuge tubes
- One year warranty on materials and workmanship
- Overall dimensions: 15" w x 26.9" d x 13.9" h
- Actual weight 88 lbs. (40 kg). Shipping weight 162 lbs. (73.5 kg)

* Labconco exclusive feature

Standards conformance & regulations:

- UL Standard 61010-1 (115V, 60 Hz models)
- CAN/CSA C22.2 No. 61010-1 (115V, 60 Hz models)
- CE Conformity marking (230V, 50/60 Hz models)
- ⚠ **WARNING:** Cancer — P65Warnings.ca.gov (California only)

Options include:

- Standard voltage and frequency configurations
 - 115V, 60 Hz, 5.10A
 - 230V, 60 Hz, 3.25A
 - 230V, 50 Hz, 3.25A
- Region-specific electrical plug configurations

All models require (not included):

- Sample tubes. Contact your laboratory supply dealer

Optional accessories:

- CentriZap™ Pro Strobe Light
- Rotor(s)
- CentriVap Cart



CentriVap® Pro Benchtop Vacuum Concentrators

Specifications

All models feature:

- * VaporWorks™ OS for customization and storage of run parameters, data monitoring and output and device diagnostics
- * 5" full color touchscreen display
- * In-run and programmed parameter changes for full manipulation of rotor speed, chamber temperature from off to 100° C, chamber preheat, run time and vacuum pressure
- * Pre-programmed menu of methods for a wide variety of sample types
- * Desiccant mode for vacuum desiccation of samples and Lyo-mode for small scale benchtop lyophilization when combined with a rotary vane vacuum pump and Cold Trap
- * End point assist aids in determining dryness on select sample volumes and temperatures
- * Ethernet connectivity for automated alerts about sample run data, method parameters, maintenance, and software updates
- Automatic vacuum release valve
- Built-in vacuum delay allows rotor to achieve speed before applying vacuum
- Audible alarm to signal
- Solvent resistant glass lid
- Lid latch with safety sensor
- Phenol-free lid gasket
- Powder-coated aluminum chamber
- * Centrifugal motion provided by a brushless motor featuring customizable rotor speed from 500 to 1800 RPM
- * 300-watt chamber heater speeds evaporation
- * Brushed stainless steel and charcoal, powder-coated steel exterior with blue accents
- 1/2" OD polypropylene hose fitting for connection to vacuum tubing. Vacuum pump is not included
- * Vacuum port with quick disconnect fitting for 1/4" ID tubing
- Electrical receptacle on the back for connection to an accessory vacuum pump
- One year warranty on materials and workmanship
- Overall dimensions: 15" w x 19" d x 13.9" h
- Actual weight 52 lbs. (23.6 kg). Shipping weight 124 lbs. (56.2 kg)

Standards conformance & regulations:

- UL Standard 61010-1 (115V, 60 Hz models)
- CAN/CSA C22.2 No. 61010-1 (115V, 60 Hz models)
- CE Conformity marking (230V, 50/60 Hz models)
- ⚠ **WARNING:** Cancer — P65Warnings.ca.gov (California only)

Options include:

- 300-watt Heat Boost
- Standard voltage and frequency configurations
 - CentriVap Pro
 - 115V, 60 Hz, 5.00A
 - 230V, 60 Hz, 2.50A
 - 230V, 50 Hz, 2.50A
 - CentriVap Pro with Heat Boost
 - 115V, 60 Hz, 7.50A
 - 230V, 60 Hz, 3.75A
 - 230V, 50 Hz, 3.75A
- Region-specific electrical plug configurations

All models require (not included):

- Vacuum Pump
- CentriVap Cold Trap
- Rotor(s)
- Sample tubes. Contact your laboratory supply dealer

Optional accessories:

- CentriZap™ Pro Strobe Light
- CentriVap Cart
- Secondary Trap

*Hastelloy® is a registered trademark of Haynes International, Inc.

- * Labconco exclusive feature



Acid-Resistant **CentriVap® Pro** Vacuum Concentrators

Specifications

All models feature:

- PTFE-coated aluminum chamber with Hastelloy* shaft and other acid-resistant components
- Solvent resistant glass lid
- * VaporWorks™ OS for customization and storage of run parameters, data monitoring and output and device diagnostics
- * 5" full color touchscreen display
- * In-run and programmed parameter changes for full manipulation of rotor speed, chamber temperature from off to 100° C, chamber preheat, run time and vacuum pressure
- * Pre-programmed menu of methods for a wide variety of sample types
- * Desiccant mode for vacuum desiccation of samples and Lyo-mode for small scale benchtop lyophilization when combined with a rotary vane vacuum pump and Cold Trap
- * End point assist aids in determining dryness on select sample volumes and temperatures
- * Ethernet connectivity for automated alerts about sample run data, method parameters, maintenance, and software updates
- Automatic vacuum release valve
- Built-in vacuum delay allows rotor to achieve speed before applying vacuum
- Audible alarm to signal completion of set point run time
- Lid latch with safety sensor
- Phenol-free lid gasket
- * Centrifugal motion provided by a brushless motor featuring customizable rotor speed from 500 to 1800 RPM
- * 300-watt chamber heater speeds evaporation
- * Brushed stainless steel and charcoal, powder-coated steel exterior with blue accents
- 1/2" OD polypropylene hose fitting for connection to vacuum tubing. Vacuum pump is not included
- * Vacuum port with quick disconnect fitting for 1/4" ID tubing
- Electrical receptacle on the back for connection to an accessory vacuum pump
- One year warranty on materials and workmanship
- Overall dimensions: 15" w x 19" d x 13.9" h
- Actual weight 52 lbs. (23.6 kg). Shipping weight 124 lbs. (56.2 kg)

Standards conformance & regulations:

- UL Standard 61010-1 (115V, 60 Hz models)
- CAN/CSA C22.2 No. 61010-1 (115V, 60 Hz models)
- CE Conformity marking (230V, 50/60 Hz models)
- ⚠ **WARNING:** Cancer — P65Warnings.ca.gov (California only)

Options include:

- Standard voltage and frequency configurations
 - Acid Resistant CentriVap Pro
 - 115V, 60 Hz, 5.00A
 - 230V, 60 Hz, 2.50A
 - 230V, 50 Hz, 2.50A
 - Acid Resistant CentriVap Pro with Heat Boost
 - 115V, 60 Hz, 7.50A
 - 230V, 60 Hz, 3.75A
 - 230V, 50 Hz, 3.75A
- Region-specific electrical plug configurations

All models require (not included):

- Vacuum Pump
- CentriVap Cold Trap
- Acid-Resistant Rotor(s)
- Sample tubes. Contact your laboratory supply dealer

Optional accessories:

- CentriZap™ Pro Strobe Light
- CentriVap Cart
- Secondary Trap

*Hastelloy® is a registered trademark of Haynes International, Inc.

* Labconco exclusive feature



CentriVap® Cold Traps

Specifications

All models feature:

- HCFC/CFC-free refrigeration system
- 4-liter stainless steel collector
- Lid with two Quick-Disconnect fittings for 1/2" ID hose, rubber gasket and insulating cover
- Stainless steel drain port with polypropylene valve
- Grounding clip
- * Brushed stainless steel and charcoal, powder-coated steel exterior with blue accents
- ON/OFF power switch
- One year warranty on materials and workmanship

-50° C Cold Trap models also feature:

- 1/3 hp compressor lowers cold trap to -50° C (-58° F) in less than 30 minutes
- * Temperature graph that illuminates green when the collector coil reaches operating temperature of -40° C (-40° F)
- Acrylic or stainless steel lid, depending on model
- Overall dimensions: 14.5" w x 24.2" d x 13.8" h
- Actual weight 70 lbs. (32 kg). Shipping weight 80 lbs. (36 kg)

-84° C Cold Trap models also feature:

- Two 1/3 hp compressors lowers cold trap to -84° C (-119° F) in less than 40 minutes
- * Temperature graph that illuminates green when the collector coil reaches operating temperature of -65° C (-85° F).
- Stainless steel lid
- Overall dimensions: 14.5" w x 22.0" d x 20.9" h
- Actual weight 135 lbs. (61 kg). Shipping weight 142 lbs. (64 kg)

-105° C Cold Trap models also feature:

- Two 1/3 hp compressors lowers cold trap to -105° C (-157° F) in less than 40 minutes
- * Temperature graph that illuminates green when the collector coil reaches operating temperature of -65° C (-85° F)
- Stainless steel lid
- Overall dimensions: 24.1" w x 23.9" d x 17.6" h
- Actual weight 150 lbs. (68 kg). Shipping weight 170 lbs. (77 kg)

Standards conformance & regulations:

- UL Standard 61010-1 (115V, 60 Hz models)
- CAN/CSA C22.2 No. 61010-1 (115V, 60 Hz models)
- CE Conformity marking (230V, 50/60 Hz models)
- ⚠ **WARNING:** Cancer — P65Warnings.ca.gov (California only)

Options include:

- Standard voltage and frequency configurations
 - -50° C Cold Traps
 - 115V, 60 Hz, 7A
 - 230V, 60 Hz, 3A
 - 230V, 50 Hz, 3A
 - -84° C Cold Traps
 - 115V, 60 Hz, 12A
 - 230V, 60 Hz, 6A
 - 230V, 50 Hz, 6A
 - -105° C Cold Traps
 - 115V, 60 Hz, 13A
 - 230V, 60 Hz, 7A
 - 230V, 50 Hz, 7A
- Region-specific electrical plug configurations

Optional accessories:

- Clear Canisters and Chemical Trap Inserts
- Glass Trap
- Manifold
- CentriVap Cart

* Labconco exclusive feature



Standard CentriVap® Vacuum Concentrators

Specifications

All models feature:

- * Microprocessor-controlled programming for run time from 1 to 999 minutes, heat from OFF to HI (100° C) in one degree increments, heat time from 1 to 999 minutes, and optional Heat Boost ON/OFF. Memory stores 1 to 9 programs
- * Control panel with RUN/STOP button, PREHEAT button, optional HEAT BOOST button, set point SELECT button, increase/decrease buttons, and 3 Quick-Start™ buttons
- LCD for display of program number, actual and set point temperature, heater time remaining, run time remaining, and optional Heat Boost activation
- Quick-Stop™ System stops vacuum pump, opens valve to bleed air into the chamber and stops the rotor within seconds after time expires or RUN/STOP button is pressed
- Automatic vacuum release valve
- Built-in vacuum delay allows rotor to achieve speed before applying vacuum
- Audible alarm to signal
- Acrylic lid
- Lid latch with safety sensor
- Phenol-free lid gasket
- Powder-coated aluminum chamber
- Centrifugal motion provided by a brushless motor capable of achieving up to 1725 rpm
- * 300-watt heater speeds evaporation
- * Brushed stainless steel and charcoal, powder-coated steel exterior with blue accents
- 1/2" OD polypropylene hose fitting for connection to vacuum tubing. Vacuum pump is not included
- * Vacuum port with quick disconnect fitting for 1/4" ID tubing
- Electrical receptacle on the back for connection to an accessory vacuum pump
- One year warranty on materials and workmanship
- Overall dimensions: 14.7" w x 19.3" d x 11.7" h
- Actual weight 42 lbs. (19 kg). Shipping weight 48 lbs. (22 kg)

Standards conformance & regulations:

- UL Standard 61010-1 (115V, 60 Hz models)
- CAN/CSA C22.2 No. 61010-1 (115V, 60 Hz models)
- CE Conformity marking (230V, 50/60 Hz models)
- ⚠ **WARNING:** Cancer — P65Warnings.ca.gov (California only)

Options include:

- Standard voltage and frequency configurations
 - 115V, 50/60 Hz, 12A
 - 230V, 50/60 Hz, 6A
- Region-specific electrical plug configurations

All models require (not included):

- Vacuum Pump
- CentriVap Cold Trap
- Rotor(s)
- Sample tubes. Contact your laboratory supply dealer

Optional accessories:

- CentriZap™ Strobe Light
- Vacuum Controller
- Glass lid
- CentriVap Cart

* Labconco exclusive feature



Standard CentriVap® DNA Vacuum Concentrators

Specifications

All models feature:

- * Microprocessor-controlled programming for run time from 1 to 999 minutes, heat from OFF to HI (100° C) in one degree increments and heat time from 1 to 999 minutes. Memory stores 1 to 9 programs
- * Control panel with RUN/STOP button, PREHEAT button, set point SELECT button, increase/decrease buttons, and 3 Quick-Start™ buttons
- LCD for display of program number, actual and set point temperature, heater time remaining and run time remaining
- Quick-Stop™ System stops vacuum pump, opens valve to bleed air into the chamber and stops the rotor within seconds after time expires or RUN/STOP button is pressed
- Built-in diaphragm pump achieves vacuum of 7 mBar and has displacement capacity of 38 L/min. All wetted parts are PTFE or other chemical-resistant fluoropolymers
- Automatic vacuum release valve
- Built-in vacuum delay allows rotor to achieve speed before applying vacuum
- Audible alarm to signal completion of set point run time
- Acrylic lid
- Lid latch with safety sensor
- Phenol-free lid gasket
- Powder-coated aluminum chamber
- * Two 177 milliliter glass traps with 1/2" OD polypropylene hose fitting for connection to vacuum tubing
- Centrifugal motion provided by a brushless motor capable of achieving up to 1725 rpm
- * 300-watt heater speeds evaporation
- * Brushed stainless steel and charcoal, powder-coated steel exterior with blue accents
- Vacuum port with quick disconnect fitting for 1/4" ID tubing
- Includes DNA Rotor 7462900. Accommodates up to 60 each 1.5 ml and 72 each 0.5 ml microcentrifuge tubes
- One year warranty on materials and workmanship
- Overall dimensions: 15.1" w x 28.5" d x 11.2" h
- Actual weight 80 lbs. (36 kg). Shipping weight 100 lbs. (45 kg)

Standards conformance & regulations:

- UL Standard 61010-1 (115V, 60 Hz models)
- CAN/CSA C22.2 No. 61010-1 (115V, 60 Hz models)
- CE Conformity marking (230V, 50/60 Hz models)
- ⚠ **WARNING:** Cancer — P65Warnings.ca.gov (California only)

Options include:

- Standard voltage and frequency configurations
 - 115V, 60 Hz, 12A
 - 230V, 50/60 Hz, 6A
- Region-specific electrical plug configurations

All models require (not included):

- Sample tubes. Contact your laboratory supply dealer

Optional accessories:

- CentriZap™ Strobe Light
- Rotor(s)
- Vacuum Controller
- Glass lid

* Labconco exclusive feature



**Visit labconco.com to request information
for all Labconco products.**

LABCONCO CORPORATION

8811 Prospect Avenue
Kansas City, MO 64132

(800) 821-5525 | (816) 333-8811

labconco.com

©2025 LABCONCO CORPORATION

Printed in the U.S.A.

Product design subject to change without notice.

3-34-4/10/2025

