

# STAT CART



**EVERHUTCH**

BY

**KEWAUNEE®**



STATESVILLE, NC



WIDTH  
HEIGHT  
COLOR  
DRAWER CONFIG  
TRAY CONFIG  
LOCK OPTIONS  
ACCESSORIES

**YOUR CART**

# STAT CART

This procedure cart was specifically designed for patients and caregivers in mind. Defining features promote infection control, adaptability and durability.

**STATCART** standard sizes and options in drawers and trays were made to be compatible with existing procedure carts on the market today. This compatibility creates uniformity and allows hospitals to easily upgrade their cart without the need to update protocols. **STATCART** is quickly adaptable to meet the demands of different departments with its efficient equipment management Rail System. Due to the adaptability of its components, this system allows customers to find the optimal solution to answer specific clinical needs. Available with multiple lock options including a key lock, electronic keypad and electronic keypad with proximity card reader. The locking system can also be set up to offer dual credential unlocking. The cart is easily maneuvered around on plate-mounted swivel and locking casters.

This high quality storage system is manufactured and sourced in the USA and can withstand any demanding healthcare environment.



Multiple Configs for Top Accessories



ABS Acrylic, Scratch Resistant, Easy Clean Top with Spill Edge. UV Protection to Prevent Yellowing.



Easily Accessible Batteries and Lock Upgrades



Stable and Ergonomic Grab Handles



Keyed, RFID, & Electronic Gang Locks



Sturdy Side Rails Have Minimal Areas to Harbor Bacteria



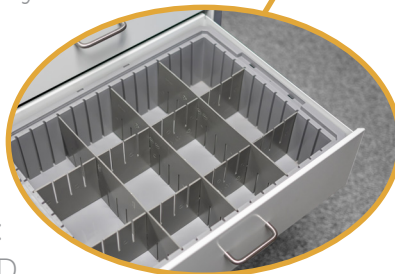
Toolless Accessory Changes Using the Fairfield Rail System



Multiple Depths of Drawers with Split and Single Trays



Sanitary and Strong Lower Bumpers



Drawers Accept Most Common Tray Inserts.  
STATCART Drawer Sizes:  
Standard: 22.5"W x 17.75"D  
Narrow 17"W x 17.75"D:



Sturdy, Easy to Clean, Locking Casters



# STAT CART | WIDTH & HEIGHT

## STANDARD WIDTH 29"



## NARROW WIDTH 22.5"



## COLOR COMBINATIONS

Drawer faces can be colored separately from cart shell.

### ■ Powder Coat Finishes

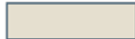
SNOW WHITE



TRUE BLUE



LIGHT NEUTRAL



RAPTURE RED



SAFETY YELLOW



Other colors upon request\*

# STAT CART

# DRAWER CONFIGURATIONS



Each cart height offers several drawer combinations comprised of these drawer heights:

- 3"
- 6"
- 9"

**\*EXAMPLE BELOW SHOWING 30" H STATCART  
DRAWER COMBINATIONS**

**MSC30AM050**



**MSC30AM131**



**MSC30AM212**



**MSC30AM240**



**MSC30AM321**



**MSC30AM430**



**MSC30AM511**



**MSC30AM810**



# STAT CART

# TRAY OPTIONS

## SINGLE TRAY PACKET #1



## SPLIT TRAY PACKET #2



MSC500A3TRKT1

3" D

**FULL SINGLE TRAY**

MSC500A6TRKT1

6" D

**FULL SINGLE TRAY**

MSC500A3TRKT2

3" D

**SPLIT TRAY**

MSC500A6TRKT2

6" D

**SPLIT TRAY**



MSC500A9TRKT1

8" D

**FULL SINGLE TRAY**



MSC500A9TRKT1

8" D

**FULL SINGLE TRAY**

# STAT CART | LOCK OPTIONS

**CONFIGURE YOUR CART SECURITY WITH THESE LOCK OPTIONS**



**MANUAL LOCK -01**  
comes as standard

## **ELECTRONIC LOCK -05**

- 250 user/supervisor codes
- Flush mounted membrane keypad with Battery pack.
- Standard RJ11 communications port for audit trail download
- Audit trail of last 1500 access attempts with date, time and user name
- Motor driven latching mechanism



**KEYLESS ELECTRONIC KEYPAD -06**  
**PROXIMITY CARD HID ACCESS**

**KEYLESS ELECTRONIC KEYPAD -07**  
**I-CLASS HID ACCESS HIGH FREQUENCY**

## **DRAWER LOCK -08**



**GANG LOCK -09**

# STAT CART | CONFIGURATIONS

## EMERGENCY CART



## PROCEDURE CART





# STAT CART | CONFIGURATIONS

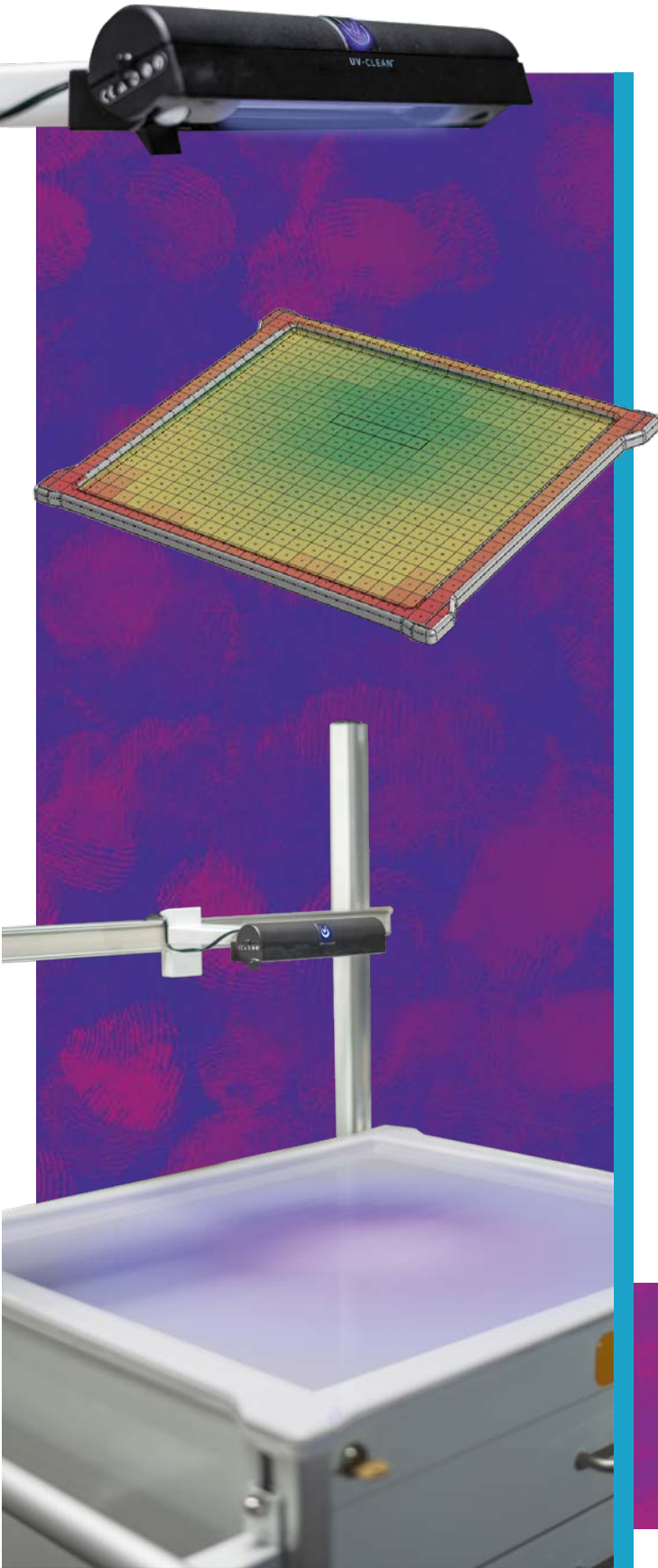
## ANESTHESIA CART



## ISOLATION CART



# STAT CART



## KILL MICROORGANISMS WITH **UV-CLEAN**

UV-CLEAN by Proximity is the award-winning, automated device that provides no-touch ultraviolet disinfection with UV-C light, the most germicidal ultraviolet light. This strong and safe device **efficiently inactivates 99.9% of bacteria and viruses** on high touch surfaces. With this small, yet powerful device, you can say goodbye to microorganisms and remove concerns with an enhanced cleaning protocol to improve current infection control practices.

### APPROXIMATE 99% REDUCTION @ 2MINUTES

For the following organisms requires:

Salmonella Species	53 uW/cm <sup>2</sup>
E. Coli	50 uW/cm <sup>2</sup>
Influenza	50 uW/cm <sup>2</sup>
Staphylococcus Species	42 uW/cm <sup>2</sup>
Coronavirus (SARS 1)	35 uW/cm <sup>2</sup>
Streptococcus Species	33 uW/cm <sup>2</sup>

### POINT OF CARE: HEALTHCARE FACILITIES

Hospital acquired infections affect millions of people and add billions of dollars to healthcare costs in the U.S. annually. Although hospitals and healthcare facilities implement rigorous cleaning and disinfection practices to prevent Healthcare Associated Infections (HAIs), harmful pathogens still spread throughout susceptible environments. In fact, HAIs, including C. diff, MRSA and Norovirus, can affect millions of people and add billions of dollars to healthcare costs in the U.S. annually.



80% of pathogens are transferred by touch



1 out of 31 patients develop a HAI



1.7 million HAIs occur in U.S. hospitals each year



Your length of stay in the hospital increases by 17.6 days if you get an HAI

# STAT CART | EQUIPMENT MANAGEMENT

The EVERHUTCH equipment management system provides flexibility and the opportunity to configure any cart to work in any department. Accessories can be easily removed, added or relocated to another position on the cart to increase efficiency and ergonomics. These accessories can also be moved easily from existing wall equipment rail systems to the cart and back again. This system gives healthcare workers the flexibility needed for optimum patient care.

## FROM WALL TO CART



# STAT CART | ACCESSORIES

## TILT BINS - WHITE PLASTIC BOX WITH CLEAR PLASTIC BINS

**MSC641**  
14"H x 12"W x 14"D  
**1 Bin**



**MSC642**  
14"H x 24"W x 14"D  
**2 Bin**



**MSC643**  
9.5"H x 24"W x 9.5"D  
**3 Bin**



**MSC644**  
8.25"H x 23.75"W x 5.5"D  
**4 Bin**



**MSC645**  
6.5"H x 23.75"W x 4.5"D  
**5 Bin**

## BASKETS- WHITE PLASTIC BOX WITH CLEAR PLASTIC BINS



**MSC646**  
4.25"H x 10"W x 7"D  
**3 Bin**



**MSC647**  
4"H x 18"W x 10"D  
**3 Bin**



**MSC648**  
4.75"H x 5.375"D  
**UTENCIL CUP**

## HOOKS - & INTEGRATED COUNTING PLATE



**MSC649**  
2.5"H x 1.5"W x 2"D  
**1 HOOK 2"**



**MSC650**  
2.5"H x 1.5"W x 4"D  
**1 HOOK 4"**



**MSC651**  
2.5"H x 12"W x 2"D  
**3 HOOK 2"**



**MSC652**  
2.5"H x 12"W x 4"D  
**3 HOOK 4"**

# STAT CART | ACCESSORIES

## GLOVE BOX HOLDER - ABS CLEAR PLASTIC (GLOVES NOT INCLUDED)



**MSC625**  
10"H x 18.75"W x 5"D  
**TRIPLE HORIZONTAL**



**MSC622**  
10"H x 18.75"W x 5"D  
**TRIPLE VERTICAL**



**MSC626**  
10"H x 6"W x 5"D  
**SINGLE VERTICAL  
& HORIZONTAL MOUNT**

## MEDICAL GAS



**MSC621**  
16"H x 5.5"W x 5.5"D  
**WIRE METAL  
OXYGEN HOLDER**



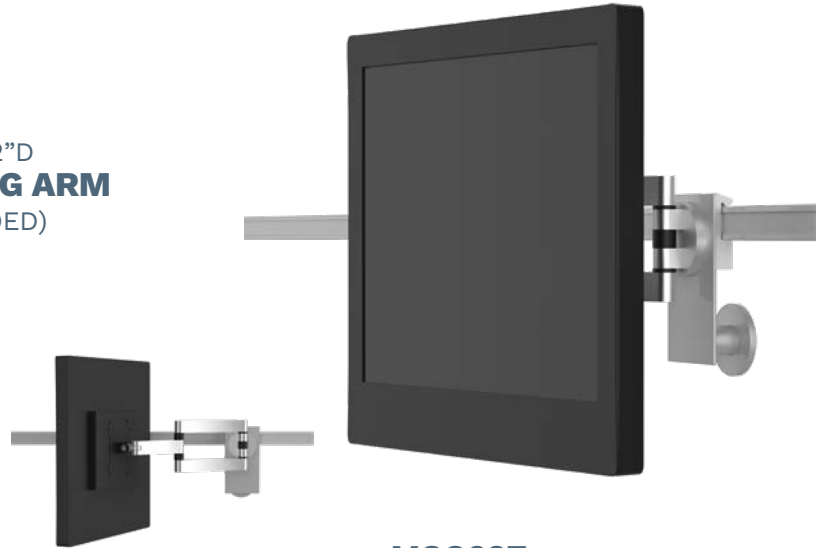
**MSC635**  
6"H x 3.5"W x 8"D  
**SUCTION PUMP SHELF KIT**  
(MONITOR NOT INCLUDED)

# STAT CART | ACCESSORIES

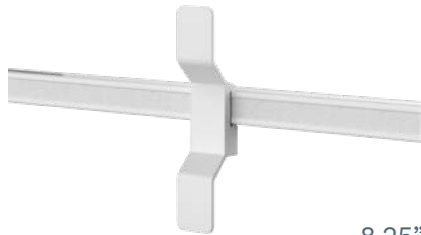
## MONITOR MOUNTING AND CABLE MANAGEMENT



**MSC634**  
5.5"H x 5.5"W x 2"D  
**GCX STYLE SWING ARM**  
(GCX NOT INCLUDED)



**MSC637**  
6"H x 3.5"W x 8"D  
**MOUNTING PLATE AND  
ARTICULATING / TILTING VESA MOUNT**  
(MONITOR NOT INCLUDED)



**MSC654**  
8.25"H x 1"W x 1.5"D  
**CORD CLEAT**

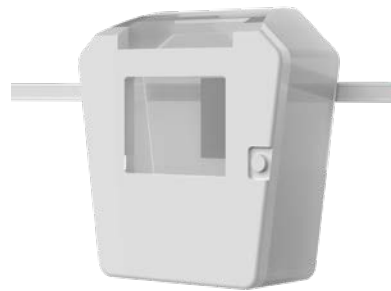
## WASTE MANAGEMENT



**MSC629**  
10"H x 18.75"W x 5"D  
**12QT WASTE BIN &  
AND RAIL MOUNT**



**MSC628**  
10"H x 18.75"W x 5"D  
**RAIL MOUNT  
FOR WASTE BIN**



**MSC623**  
5"H x 5"W x 1"D  
**SHARPES BOX &  
RAIL MOUNT**



**MSC627**  
5"H x 5"W x 1"D  
**RAIL MOUNT FOR  
SHARPES**

# STAT CART

# ACCESSORIES

## SHELVES - FIXED AND FOLDING



**MSC632**

15"W x 10"D

**FLIP-UP SURFACE 15"  
SIDE MOUNTED**

Scratch resistant food grade high density polyethylene.  
Indented spill lip. Up to 100lb load capacity.



**MSC633**

20"W x 18"D

**FLIP-UP SURFACE 20"  
REAR MOUNTED**

Scratch resistant food grade high density polyethylene.  
Indented spill lip. Up to 100lb load capacity.



**MSC630**

10"W x 8"D

**10" FIXED WRITING SURFACE  
WITH LIP EDGES**



**MSC631**

14.5"W x 13.5"D

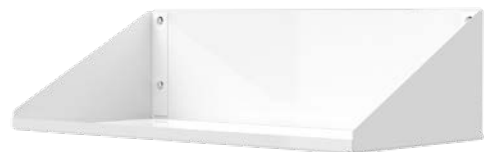
**15" FIXED WRITING SURFACE  
WITH LIP EDGES**



**MSC667S**

29"W

**STANDARD WIDTH  
ACCESSORIES SHELF**



**MSC667N**

22.5"W

**NARROW WIDTH  
ACCESSORIES SHELF**

# STAT CART | ACCESSORIES

## RAILS



**MSC657**  
21.5"  
**UNIVERSAL SIDE RAIL**



**MSC658S**  
23.5"  
**STANDARD WIDTH  
REAR RAIL**



**MSC658N**  
18"  
**NARROW WIDTH  
REAR RAIL**



**MSC619**  
XXXXXX  
**CPR BOARD AND RAIL**



**MSC655S**  
23.5"W  
**REAR ACCESSORY RAIL KIT  
STANDARD WIDTH**



**MSC655N**  
18"W  
**REAR ACCESSORY RAIL KIT  
NARROW WIDTH**



**MSC664**  
24"H  
**STANDARD HEIGHT**



**MSC665**  
38"H  
**EXTENDED HEIGHT**



# STAT CART | ACCESSORIES

**MISCELLANEOUS** - ABS CLEAR PLASTIC (GLOVES NOT INCLUDED)



**MSC636**  
10"H x 18.75"W x 5"D  
**ACRYLIC CHART HOLDER**



**MSC653**  
10"H x 18.75"W x 5"D  
**4 OUTLET  
POWER STRIP**



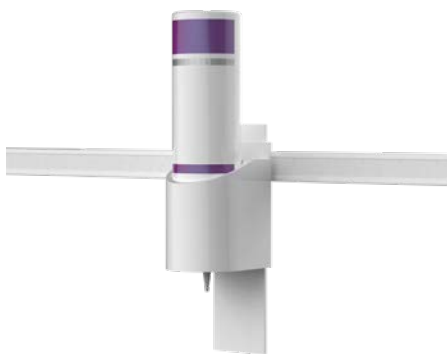
**MSC640**  
5.5"H x 5.5"W x 2"D  
**DEFIBRILLATOR  
SHELF**



**MSC606**  
**STANDARD TOP**



**MSC607**  
**NARROW TOP**



**MSC636**  
7"H x 2.5"W x 1"D  
**FOAM DISPENSER  
& BRACKET**



**MSC663**  
**RAIL BRACKET**



**MSC618**  
**SIDE HANDLE**

# STAT CART

# ACCESSORIES

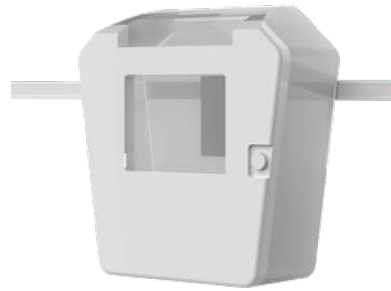
## WASTE MANAGEMENT



**MSC629**  
10"H x 18.75"W x 5"D  
**12QT WASTE BIN &  
AND RAIL MOUNT**



**MSC628**  
10"H x 18.75"W x 5"D  
**RAIL MOUNT  
FOR WASTE BIN**



**MSC623**  
5"H x 5"W x 1"D  
**SHARPES BOX &  
RAIL MOUNT**



**MSC627**  
5"H x 5"W x 1"D  
**RAIL MOUNT FOR  
SHARPES**

## INFUSION MANAGEMENT



**MSC620**  
36"H x 20" pole x 4"D  
**IV POLE**



**MSC624**  
1"D x 4"H ON 5' AMF POST  
**C-CLAMP POLE MOUNT**

# ACCESSORY EXAMPLES





BY  
**KEWAUNEE®**

At EVERHUTCH we're making vital products for the healthcare space. We provide you with **STORAGE WITH PURPOSE** that you need to organize and optimize your environment.

EVERHUTCH leverages more than a century of experience from Kewaunee, a recognized global leader in the design, manufacture, and installation of laboratory, healthcare, and technical furniture products.

A North Carolina based company founded in **1906**, **KEWAUNEE'S** history of quality products and scientific expertise empowers EVERHUTCH to provide you with healthcare solutions to deliver quality patient care. With a suite of products designed to meet the needs of both the modern healthcare setting and clinical lab space, flexibility and adjust ability are essential.

We've got you from start to finish. Our products are proudly made in the US under one roof, ensuring quality and reliability through the entire process.

