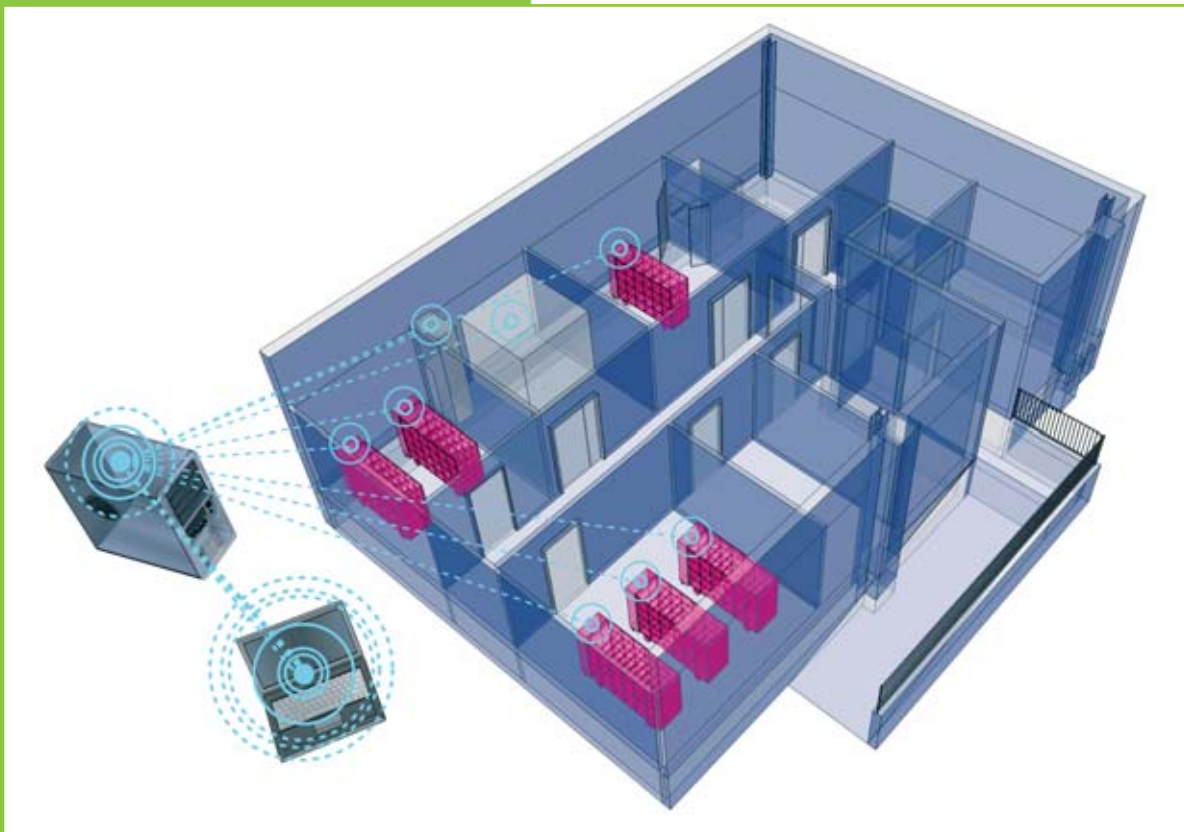




*WDM*

*Wireless Data Management*

- Equipment remote control: enables not only to monitor your equipment, but to change settings and parameters.
- Automated data collecting
- User friendly: easy to install, intuitive to use
- Flexible: only an internet connection and a PC/mobile phone are required; can be installed in existing facilities



*"WDM significantly improves the capability of facility managers to quickly identify potential problems and to manage them even from outside the facility".*



## 1/ Introduction

On a day-to-day basis scientists face the problems related to the continuous need to checking the parameters of their experiments at any time, and to intervene in case of necessity.

This process is expensive and time consuming, and it forces technicians to undertake a tiresome activity (for example, how much time can be wasted to locate an alarm coming from a malfunctioning AHU)?

Many products in this field allow you to monitor your equipment, but not at any distance, and not at a in any great depth (e.g. room conditions may be different from those of a rack condition), and most of all, they do not allow any control. This is why Tecniplast has developed WDM - Wireless Data Management, an exclusive wi-fi software developed to monitor but

also control:

- The functioning of the equipment.
- Or emergency situations.
- Allowing at the same time to collect data related to the experiments in an exact, reliable and inexpensive way.

## 2/ Cost Saving

WDM offers a great ROI in managing a facility, since it is time and cost saving. Activities that had to be performed on the spot can be now carried out remotely, with an internet connection and a pc or a mobile phone! WDM allows you to access information about your equipment through the web and to receive alarm notifications through e-mail and SMS: so in any place, at any time!

## 3/ Equipment Remote Monitor and Control, Automated Data Collecting

Your facility can be controlled in such detail you can operate at cage level and not at room level: WDM allows instant identification and localization of every single piece of equipment.

An instant alarm reporting system is also part of WDM; in case of alarm, the service technician will be able to operate extremely quickly and efficiently way, since there is no waste of time in locating the malfunctioning machine.

Furthermore, the system does not only perform equipment monitoring, but also:

- Automated data collecting.
- Equipment control! You will not only be able to check the conditions of your racks, but also to change their parameters in case of need!

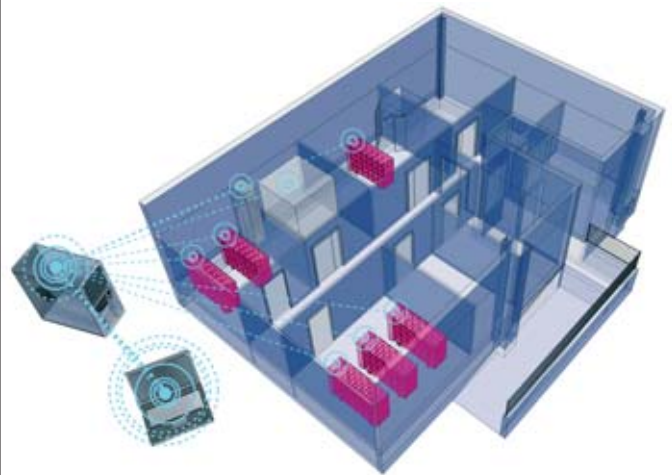
## 4/ Flexibility

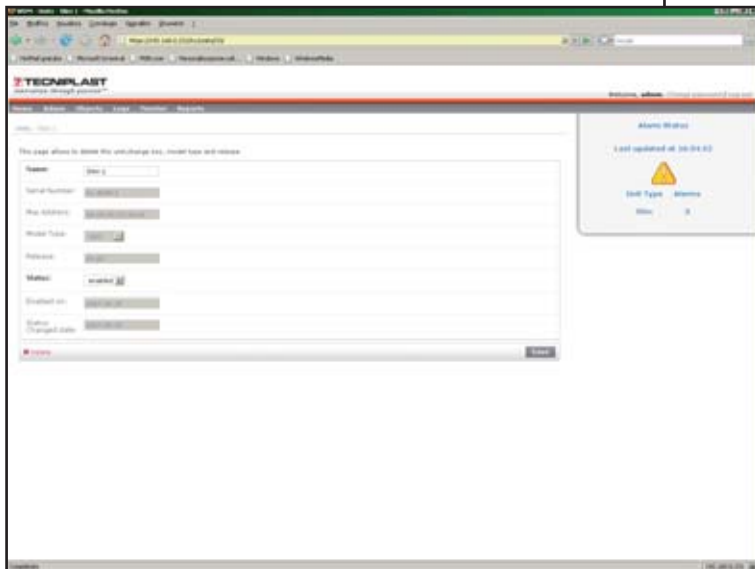
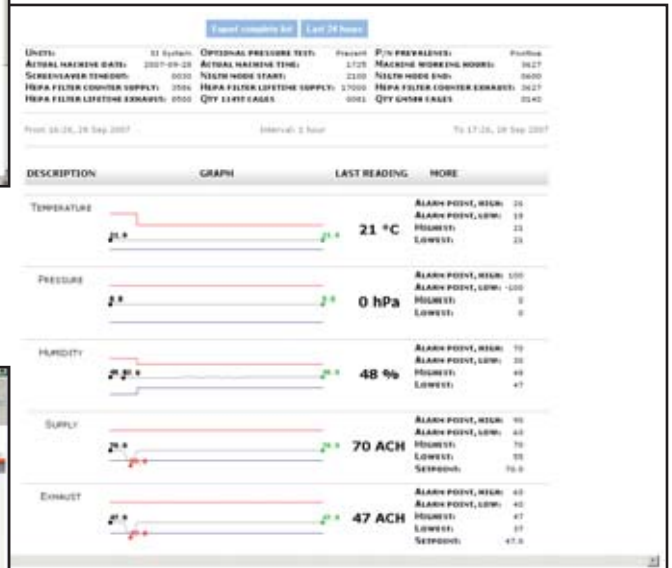
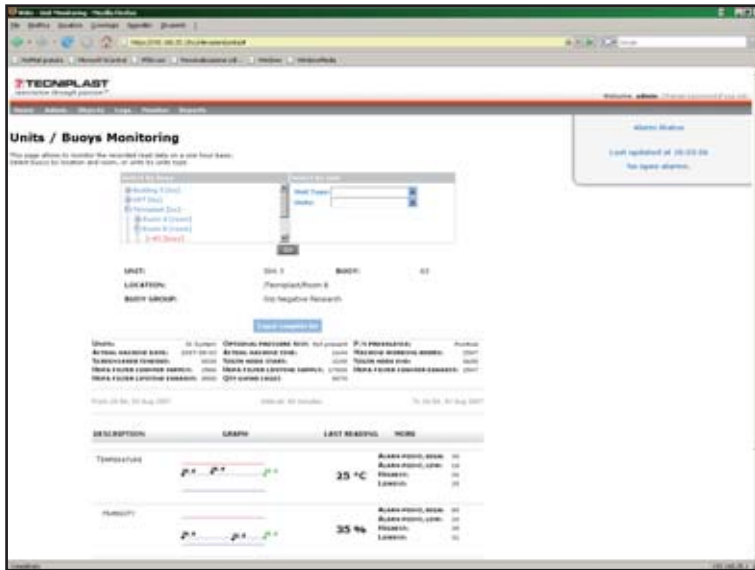
You can access the software with a simple internet connection through your mobile phone or your PC, without any need for dedicated hardware and/or software. There is also the possibility to upgrade and expand existing facilities. Finally, WDM is an open solution, and can be used on the whole Tecniplast product range.

## 5/ User Friendly

Easy to install, easy and intuitive to use.

Training is quick: only one session is needed for all Tecniplast products in your lab.





Unit Slim 2 configuration is not aligned. - Messaggio (Testo normale)

Da: wdm-trace@in.it, va.it Invia: venerdì 03/08/2007 16:54

A:

Cc:

Oggetto: Unit Slim 2 configuration is not aligned.

This is a Tecniplast Control Center message.  
Unit 'Slim 2' attached to buoy 'A2' placed in 'Tecniplast/Room B' had a problem on 03 Aug 2007 at 16:53:  
Unit Slim 2 configuration is not aligned.



## Related Products

To maximise operational efficiency and learn more about these products contact your local representative.



**Sealsafe Plus:** high containment, certified protection from allergens, high density and practicality of use. The IVC (r)evolution.



**CS5 changing station.** Compact and light double side mobile Changing Station that allows the user to easily move the cabinet inside the animal room.



**900 Series Rack Washer.** Designed specifically to meet the throughput needs of medium to large size facilities, these machines will live up to your highest expectations in terms of maximum cleaning efficiency, safety, environmental impact and quality construction.

 **TECNIPLAST**

HEADQUARTERS

**ITALY** | Tel. +39 0332 809711 • [www.tecniplast.it](http://www.tecniplast.it) • E-mail: [tecnicom@tecniplast.it](mailto:tecnicom@tecniplast.it)

SISTER COMPANIES

**AUSTRALIA/NEW ZEALAND** | Tel. + 61 2 8845 6500 • [www.tecniplast.it](http://www.tecniplast.it) • E-mail: [info@tecniplast.com.au](mailto:info@tecniplast.com.au)

**FRANCE** | Tel. 04 72 52 94 41 • [www.tecniplast.fr](http://www.tecniplast.fr) • E-mail: [info@tecniplast.fr](mailto:info@tecniplast.fr)

**GERMANY** | Tel. 08805 921320 • [www.tecniplast.de](http://www.tecniplast.de) • E-mail: [info@tecniplast.de](mailto:info@tecniplast.de)

**UNITED KINGDOM** | Tel. 0845 0504556 • [www.tecniplast.it](http://www.tecniplast.it) • E-mail: [info@tecniplastuk.com](mailto:info@tecniplastuk.com)

**JAPAN** | Tel. + 03 5770 5375 • [www.tecniplast.it](http://www.tecniplast.it) • E-mail: [info@tecniplastjapan.co.jp](mailto:info@tecniplastjapan.co.jp)

**USA/CANADA** | Toll Free: 877.669.2243 • [www.tecniplastusa.com](http://www.tecniplastusa.com) • E-mail: [info@tecniplastusa.com](mailto:info@tecniplastusa.com)

To find your local distributor, please visit [www.tecniplast.it](http://www.tecniplast.it)



ISO-9001 - Cert. n° 0875



ISO-14001 - Cert. n° 0256A/0

