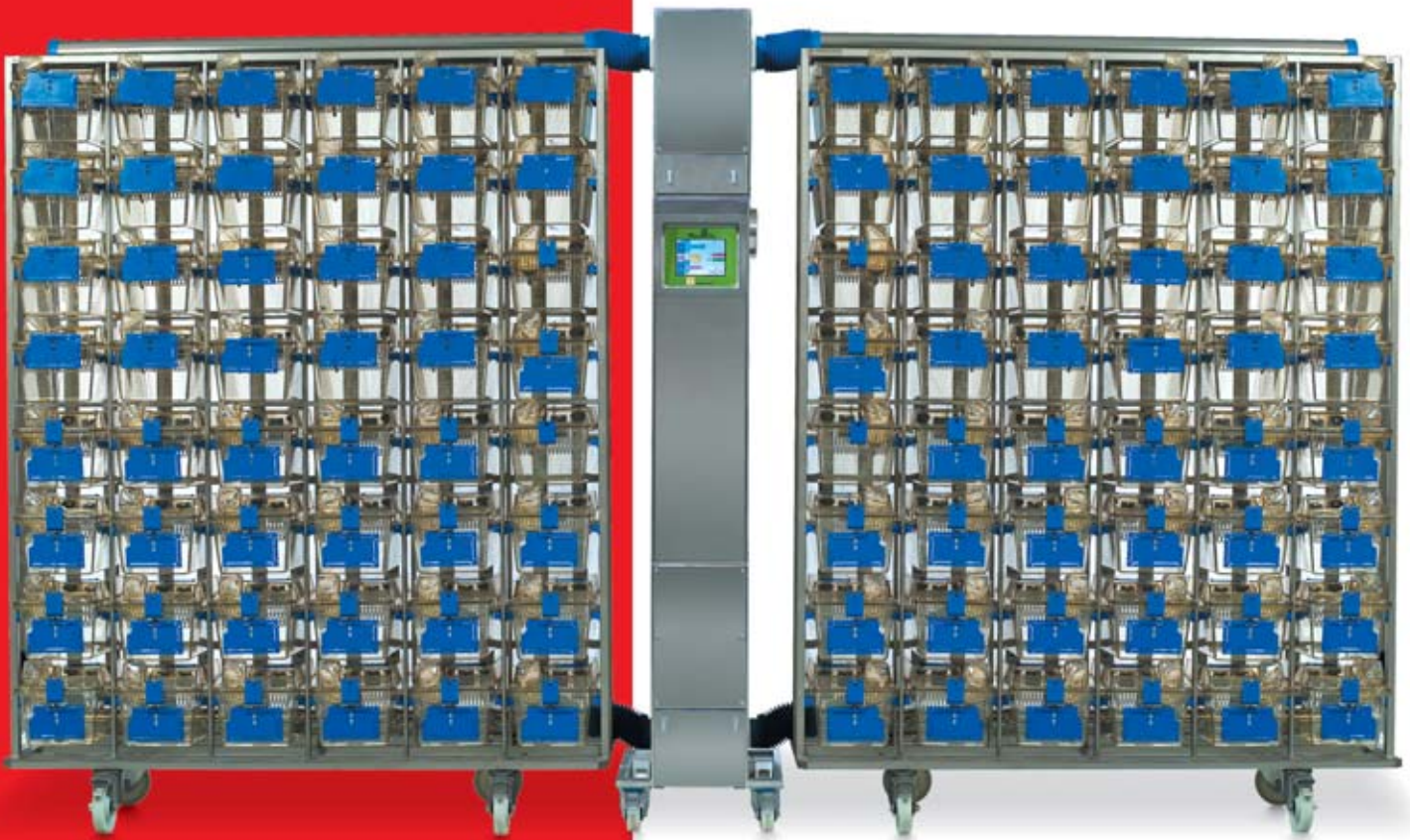




Housing

Sealsafe®

- Safety
- Practicality of use
- Cage visibility
- Housing Flexibility



"The most flexible and practical housing equipment we ever adopted. We feel we can feel safe for both animals and their caretakers".

Sealsafe™



TECNIPLAST
innovation through passionSM

1/Visibility

The clear Sealsafe™ top provides excellent visibility into the cage and increased animal space because of the limited bottle/diet depression volume.

2/Cage Airflow Design

A preference test has demonstrated that mice prefer cages having the air supply in the cover to that in the wall. Inlets in the wall of the cages blow the air in at animal height, the situation in newer types of IVC seems to provoke less uncomfortable conditions*.

**Individually Ventilated Cages: Beneficial for Mice and Men? V. Baumans et al. 2002 Contemporary Topics. Vol.41:13-19.*

3/Housing Flexibility

Tecniplast 4 cage sizes for all housing needs: 1145T (A shoe box cage type which allows up to 30% extra cages in the same rack footprint when compared to other sizes such as Type II long or similar, used for stock or breeding pairs), 1284L/1285L (the most used mouse cage, known as Type II long, used for stock, breeding pairs and trios), 1291H (called "same cage", because it is ideal for housing both adults mice and rats) and 1500U model (the largest Sealsafe IVC, compliant with minimum requirements for both mice and rats, featuring 1500 cm²; ideal for housing also rats and guinea pigs).

4/Easy Access

Wire bar lid and Sealsafe™ top can be easily pushed and pulled with one hand for a quick access to cage occupants in constrained space such as changing stations.

5/External Water Bottle

The top features an indentation that guides precise placement of each bottle. You can remove or change bottles without disturbing, or stressing, the animals thanks to the real external bottle depression.

6/Sealing for pressure barrier

The specially moulded Nylon Seal and the quick release clamps ensure a secure seal between the top cover and the cage base; the clamps are user friendly and well proven over many years.

7/Filter

A rounded 0.2 micron filter area on the top of the cage ensures the safety of the animals in case of power failure without compromise of protection.

8/Animal Welfare

The cage and the system are designed to provide the best possible micro-environment for each animal. We define cage comfort as:

- Noise level below 50dBA.
- No ultrasound emission.
- Air speed of less than 0.2 m/sec at animal level.

9/TouchSLIM Line

The TouchSLIMLine™ is an air handling unit that is fitted with a microprocessor-controlled touch screen which controls the speed of both Supply and Exhaust blowers while displaying the Temperature and Relative Humidity. Total control at your fingertips.



Sealsafe®

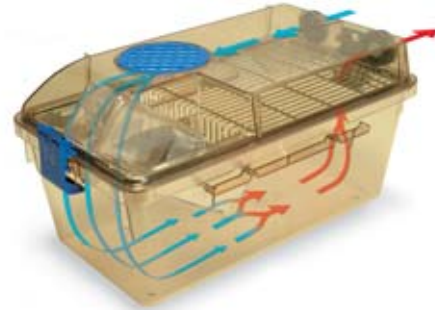
Visibility

1



Cage Airflow Design

2



Housing Flexibility

3



Easy Access

4



External Water Bottle

5



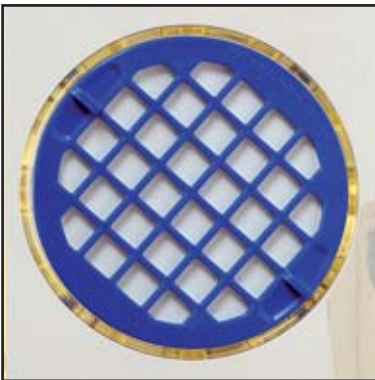
Sealing for pressure barrier

6



Filter

7



Animal Welfare

8



TECHNICAL SHEET

Sealsafe® Cages

Cage Size	Rack	Complete Rack Weight** Kg	Overall Dimensions (L x W x H) - mm / inch	Species
1145T	2T64MAC	187	1494 x 500 x 1898 + (78*) 58.82 x 19.69 x 74.72 (3.071*)	Mouse
	2T72MAC	206	1677 x 500 x 1898 + (78*) 66.02 x 19.69 x 74.72 (3.071*)	Mouse
	2T81MAC	224	1677 x 545 x 2015 + (82*) 66.02 x 21.46 x 79.33 (3.228*)	Mouse
	2T128MAC	340	1494 x 888 x 1908 + (91*) 58.82 x 34.96 x 75.12 (3.583*)	Mouse
	2T144MAC	375	1677 x 888 x 1908 + (91*) 66.02 x 34.96 x 75.12 (3.583*)	Mouse
	2T162MAC	408	1677 x 888 x 2015 + (100*) 66.02 x 34.96 x 79.33 (3.937*)	Mouse
1284L	2L48MAC	162	1476 x 500 x 1898 + (78*) 58.11 x 19.69 x 74.72 (3.071*)	Mouse
	2L56MAC	182	1717 x 500 x 1898 + (78*) 67.6 x 19.69 x 74.72 (3.071*)	Mouse
	2L63MAC***	199	1717 x 545 x 2015 + (83*) 67.6 x 21.46 x 79.33 (3.268*)	Mouse
	2L96MAC	276	1476 x 888 x 1908 + (91*) 58.11 x 34.96 x 75.12 (3.583*)	Mouse
	2L112MAC	315	1717 x 888 x 1908 + (91*) 67.6 x 34.96 x 75.12 (3.583*)	Mouse
1291H	2L126MAC***	348	1717 x 888 x 2015 + (100*) 67.6 x 34.96 x 79.33 (3.937*)	Mouse
	2H24MAC	139	1210 x 540 x 1880 + (73*) 47.64 x 21.26 x 74.02 (2.874*)	Mouse/Rat
	2H30MAC	167	1505 x 540 x 1880 + (73*) 59.25 x 21.26 x 74.02 (2.874*)	Mouse/Rat
1500U	2H36MAC	190	1800 x 540 x 1880 + (73*) 70.87 x 21.26 x 74.02 (2.874*)	Mouse/Rat
	2U20MAC	152	1642 x 680 x 1860 + (103*) 64.65 x 26.77 x 73.23 (4.055*)	Rat/Guinea Pig

Universal TouchSLIMline™ air handling unit. Cat. No. BOXUNCPO4TCS accepts all racks. *Quick removable horizontal supply plenum protruding above the roof of the rack. **It includes: rack, cage bases, lids, tops, bottles, caps and label holders. ***USE ONLY THE 1285L CAGE SIZE.

1145T Overall Dimensions (L x W x H): 369 x 156 x 132 mm / 14.53 x 6.142 x 5.197 inch
Floor area: 435 cm² / 67.43 inch²

1284L Overall Dimensions (L x W x H): 365 x 207 x 140 mm / 14.37 x 8.15 x 5.512 inch
Floor area: 530 cm² / 82.15 inch²

1285L Overall Dimensions (L x W x H): 365 x 207 x 130 mm / 14.37 x 8.15 x 5.118 inch
Floor area: 542 cm² / 84.01 inch²

1291H Overall Dimensions (L x W x H): 425 x 266 x 185 (210*) mm / 16.73 x 10.47 x 7.283 (8.268*) inch
Floor area: 800 cm² / 124 inch²

1500U Overall Dimensions (L x W x H): 480 x 375 x 210 mm / 18.9 x 14.76 x 8.268 inch
Floor area: 1500 cm² / 232.5 inch²

*Code of Practice for the Housing and Care of Animals used in Scientific Procedures, Home Office Animals (Scientific Procedures) ACT1986.

TouchSLIM™

Overall Dimensions (L x W x H): 480 x 550 x 1954 mm / 19 x 22 x 77 inch

Heat Loss: Max 406 BTU/h - Maximum Air Flow: 200 m³/h

Electrical Consumption: 1A at 200 m³/h 230V • 2A at 200 m³/h 115V

TouchSLIM Line

9

Cost Saving

- 4 single-sided, 2 double-sided racks or a mix.
- Only need one air handling unit.
- Space saving and reduces the amount of heat produced.
- Reduction of air changes per hour at room level.

Monitoring

- Parameters monitoring and alarms.
- Monitor: supply air flow, exhaust air flow, temperature, relative humidity and pressure (optional).

Flexibility

- Flexible setting and easy to use touch screen.
- Set cage type, number of air changes per hour, pressure mode (positive or negative) and navigate with ease through the system.

Ergonomics

- Stand-alone, no vibrations transmitted.
- Casters make it easy to roll in and out.
- Ergonomic, light and independent from the rack.



Options

- Cage body with grommet, for auto watering.

Accessories

- The MOUSE HOUSE provides a complex three-dimensional environment, within standard laboratory caging. Tests have shown that use of the MOUSE HOUSE reduces perceived negative behaviour patterns and increases positive ones.
- The IVC Transport Unit has been developed to move the cages from a stock/breeding rack to an experimental area and/or to move the animal groups between units, maintaining the same ventilating conditions.
- The IVC Recovery Unit is designed to ensure a controlled temperature environment for animals during post-surgical treatment and isolation of selected weak/sick groups of animals for veterinary inspection or treatment.

Sealsafe cages are made of H-TEMP Polysulfone (PSU) caging, guaranteed for 3 years from the date stamp. This plastic is highly resistant, it can be autoclaved at 134° C/273° F. Considering an average of one autoclaving cycle per week, the 3 years of warranty are comparable to at least 150 cycles.

Sealsafe cages are made of U-TEMP Polyetherimide (PEI) caging, guaranteed for 5 years from the date stamp. This plastic is highly resistant, it can be autoclaved at 134° C/273° F. Considering an average of one autoclaving cycle per week, the 5 years of warranty are comparable to at least 250 cycles.

H-TEMP Polysulfone (PSU)



U-TEMP Polyetherimide (PEI)



Related Products

To maximise operational efficiency and learn more about these products contact your local representative.



CS5 changing station. Compact and light double side mobile Changing Station that allows the user to easily move the cabinet inside the animal room.



Logistic trolleys offer safety and ergonomic features that enable high load-density for moving cages and bottles, crates, pallets and covers.



900 Series Rack Washer. Designed specifically to meet the throughput needs of medium to large size facilities, these machines will live up to your highest expectations in terms of maximum cleaning efficiency, safety, environmental impact and quality construction.

TECNIPLAST

HEADQUARTERS

ITALY | Tel. +39 0332 809711 • www.tecniplast.it • E-mail: tecnicom@tecniplast.it

AUSTRALIA/NEW ZEALAND | Tel. + 61 2 8845 6500 • www.tecniplast.it • E-mail: info@tecniplast.com.au

FRANCE | Tél. 04 72 52 94 41 • www.tecniplast.fr • E-mail: info@tecniplast.fr

GERMANY | Tel. 08805 921320 • www.tecniplast.de • E-mail: info@tecniplast.de

UNITED KINGDOM | Tel. 0845 0504556 • www.tecniplast.it • E-mail: info@tecniplastuk.com

JAPAN | Tel. + 03 5770 5375 • www.tecniplast.it • E-mail: info@tecniplastjapan.co.jp

USA/CANADA | Toll Free: 877.669.2243 • www.tecniplastusa.com • E-mail: info@tecniplastusa.com



ISO-9001 - Cert. n° 0875



ISO-14001 - Cert. n° 0256A0

