

# LABGARD®



NU-427 CLASS II, TYPE B1  
BIOLOGICAL SAFETY CABINETS



Best Products. Best Performance. Best Protection.

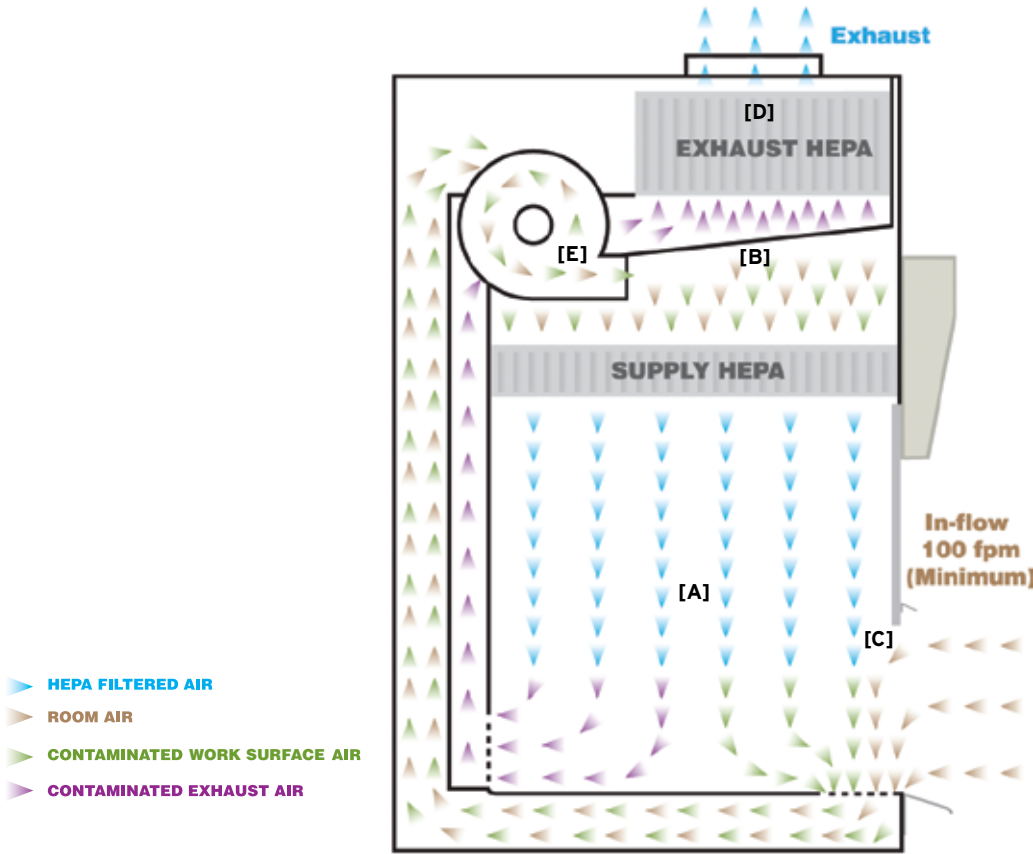
NuAire's® LabGuard® NU-427 is the only 70% exhaust Class II Type B1 Laminar Flow Biological Safety Cabinet offering a single piece, low-profile configuration in combination with a number of other significant improvements. The LabGuard® NU-427 Class II Type B1 Biological Safety Cabinet may be used for work treated with minute quantities of volatile toxic chemicals and trace amounts of radionuclides required as an adjunct to microbiological studies if work is done in the direct exhausted portion of the cabinet, or if the chemicals or radionuclides will not interfere with the work when recirculated in the downflow air.



# Improved Principles of Biological Safety Cabinet Design

## Class II, Type B1

Air In-flow 30% Recirculated, 70% Exhausted



### True Laminar Airflow [A]

Unidirectional airflow moving along parallel flow lines at a constant velocity minimizes air turbulence within the work zone.

### HEPEX™ Zero Leak Airflow System [B]

The HEPEX™ Zero Leak Airflow System eliminates the possibility of cabinet and gasket leaks.

### Greater Volume of Air Creates a Stronger Air Barrier [C]

Air exchanges within the Class II Type A2 Biological Safety Cabinet occur 25 times per minute.

### Larger, Long Lasting HEPA Filters [D]

NuAire® utilizes HEPA filters that are typically 25% larger than those in competitive products.

### Motor/Blower System Extends HEPA Filter Life [E]

As the HEPA filter loads the motor/blower system automatically compensates to assure performance and extended filter life.

### Single Piece Stainless Steel Construction

### Centrally Located Control Center

### State-of-the-Art Electronic Safety System

### Improved Quality, Reduced Noise

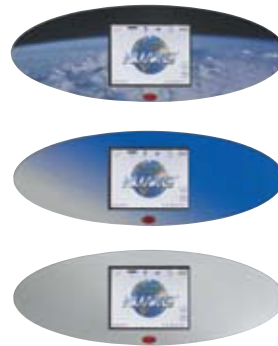
### Biological Tolerance Testing Assures Optimal Performance



Registered to: ISO 9001:2000  
ISO 13485:2003



For more information contact NuAire, Inc.® at 1.800.328.3352 or [www.nuaire.com](http://www.nuaire.com)



## NU-427 (Class II Type B1)

The TOUCHLINK™ is an easy-to-use touch screen LCD which will operate and display all system functions. On / off functions for fluorescent and germicidal ultraviolet lights, blower motor, and interior outlets. Monitors high / low limits for downflow, inflow, and sliding window position. The password protected TOUCHLINK™ also contains a unique date/clock display and timer function which can be used as a laboratory timer, to set purge cycles, outlet timer, UV light timer, auto-run timer, night setback, or weekend turn-off. The TOUCHLINK™ also contains diagnostic functions for a NSF trained service technician or certifier.

## LABGARD® NU-427 Class II, Type B1 Biological Safety Cabinet

### Standard Features

- Personnel, Product, and Environmental Protection
- True Laminar Airflow
- 70% Exhaust - 30% Recirculation
- HEPEX™ Zero Leak Airflow System
- Large HEPA Filters: 99.99% Efficiency Rating
- Metal Diffuser over Supply Filter
- Removable Control Center
- Spill Trough with Drain Valve
- 100% Stainless Steel Sealed Construction
- Minimum Air Turbulence
- 100 LFPM Air Barrier
- Sliding Window with 8" Work Access Opening Window is in Vertical Position, Minimizing Glare and Allows for Ergonomically Correct Posture
- Frameless Polished Edge Window, 18 ½" Maximum Opening
- Removable Work Tray
- External Non-Glare Fluorescent Lighting
- One Electrical Duplex Outlet (Left Front Faring)
- Two Gas Service Petcock (Right Side Wall)
- Ergonomic PVC Armrest
- NSF Standard 49 and cUL Approved

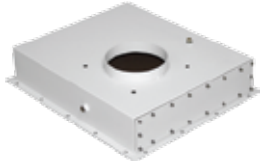
### Optional Features and Accessories

- Germicidal Ultraviolet Lamp
- Prop-Up Removable Work Tray
- Ground Fault Interrupter
- IV Bar with Six (6) Hooks
- Base Support Stand
- Footrest
- Elbow Rest
- Additional Service Valves for Gas, Air, or Vacuum
- Storage Pull-Out Trays
- Alarm Systems [exhaust]
- Adjustable Control for Support Stand or Storage Cabinet
- Decorative Side Panels
- Sinks with Hot / Cold or DI Water Faucets
- Heated Work Surface
- Seismic Studs and Brackets
- Remote Controlled Service Valves

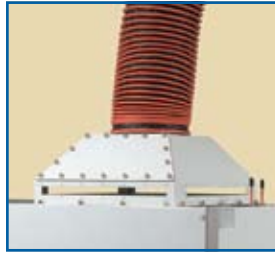
Model	Size (Nominal)	Electrical (All Sizes)	Interior Dimensions (W x H x D) in. [ mm ]	Exterior Dimensions (W x H x D) in. [ mm ]
NU-427-400	4 ft.	115 VAC / 60 Hz	46 <sup>3</sup> / <sub>8</sub> x 25 <sup>1</sup> / <sub>2</sub> x 23 <sup>1</sup> / <sub>2</sub> [ 1178 x 648 x 597 ]	53 <sup>5</sup> / <sub>8</sub> x 61 x 32 <sup>7</sup> / <sub>8</sub> [ 1362 x 1550 x 835 ]
NU-427-600	6 ft.	E: 230 VAC / 50 Hz G: 220 VAC / 60 Hz	70 <sup>3</sup> / <sub>8</sub> x 25 <sup>1</sup> / <sub>2</sub> x 23 <sup>1</sup> / <sub>2</sub> [ 1788 x 648 x 597 ]	77 <sup>5</sup> / <sub>8</sub> x 61 x 32 <sup>7</sup> / <sub>8</sub> [ 1972 x 1550 x 835 ]



## Options and Accessories



Gas Tight / Low Profile Exhaust Transition



Canopy Exhaust Transition and Flex Duct



Butterfly Valves



203 mm to 254 mm Round Transition



Neoprene Connection Kit



Exhaust Airflow Monitors



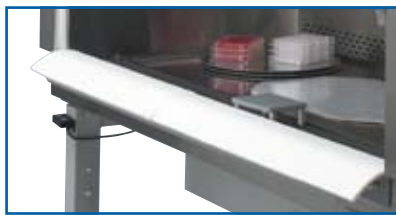
Elbow Rest



IV Bar With Hooks



Remote Controlled Service Valves



Foam Armrest Pad



Stainless Steel Turntable



Adjustable Footrest



Motorized Adjustable Base Stand



Base Stand with Storage Cabinet

### Also Available:

Ultraviolet Germicidal Lamps  
Faucets and Sinks, Cup Sinks  
Pre-Piped Plumbing  
Ground Fault Interrupter  
Side Panels

Seismic Brackets  
Metal Frame HEPA Filter  
Microscope Window  
Heated Work Surface  
Custom Configurations



For more information contact NuAire, Inc.® at 1.800.328.3352 or [www.nuaire.com](http://www.nuaire.com)



NuAire, Inc.®

2100 Fernbrook Lane

Plymouth, MN 55447

U.S.A.

1.800.328.3352

[www.nuaire.com](http://www.nuaire.com)