

- > MOBILE, MODULAR, WORKCENTERS
- > GLASSWARE HANDLING
- > MOBILE LAB TABLES
- > INSTRUMENTATION CARTS
- > WALL STORAGE
- > STAINLESS SHELVING
- > LAB CARTS
- > HIGH DENSITY STORAGE



Lab Solutions

We put space to work.™

LAB SOLUTIONS

Enhanced productivity and corrosion resistance are common denominators of every Metro® storage system designed for laboratory environments. Choose from a wide array of innovative storage, transport, material handling, and workstation products designed with your needs in mind. For more information on proven systems that “put space to work,” call 1-800-992-1776 or visit us at www.metro.com.



MOBILE, MODULAR WORKCENTERS



METRO Lab Solutions

The Starsys™ Modular System creates flexible space.

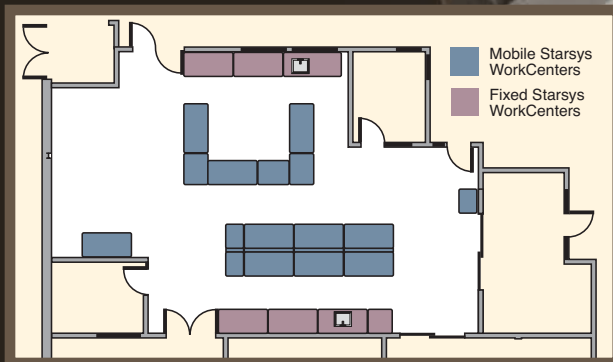
No matter what you need — open, closed, short, tall, stationary, preconfigured workcenters, mobile units — Starsys has the elements for you. With Starsys, you choose from an array of modular units to fit the space and work specifications. It's that easy.

And that flexible.

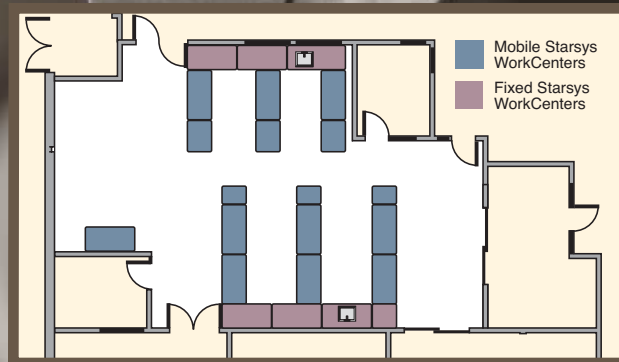
Starsys Benefits:

- Facilitates fast, efficient lab installation.
- The ability to easily reconfigure lab furniture layout as needs change.
- The ability to easily reconfigure unit design.
- Flexibility to design a storage solution to exact needs.
- Corrosion-proof polymer components for a contamination-free product.
- Durable, easy-to-clean, polymer enclosures that won't chip, peel, dent, or rust — ever.
- Rigid aluminum and coated metal substructure, combined with advanced polymers, provide a robust, stable work environment for even the most sensitive equipment.
- A high level of organization.
- Easy access to supplies.
- Greater storage density in a smaller footprint.

Research Lab . . .



Research Lab, 15 minutes Later....



Note: The Starsys System features advanced polymer materials that offer excellent chemical resistance. To obtain a complete Starsys chemical resistance report, please contact your local Metro representative.

MOBILE WORKCENTERS

A brief sampling of our entire Mobile WorkCenters product offering is shown. To find out more information, to view the entire selection of available standard units, or to design a unit for your unique application, visit www.metro.configurator.com



METRO STARSYS[™]



SXMWTK36EBS2



SXMWD36EOH3



SXMWTK36EOH2



Starsys Unit
with Reagent Shelving



SXMWD36EBS2



SXMWT36EBS6



SXMWSK39EBS2

Note: Starsys Preconfigured Mobile WorkCenters feature epoxy-resin tops. Load rated at 900 lbs. (409kg).

METRO STARSYS™ ACCESSORIES



Wall-mounted overhead cabinets (single- and double-wide) come with choice of clear or solid doors, polymer or wire shelves, and can be easily relocated along wall rail.



Tambour door overhead in a single-wide module can be accessorized using tilt-out bin, shelves, and light.



Cassette storage is ideal for small items, and can be combined with cart or overhead cabinet options



Full extension baskets and totes provide easy access and retrieval.



Overbridge and accessories keep work surface clear of supplies and equipment.



Handy tilt-out bins fitted to side storage units can be prestocked with lab supplies.



Roll-up tambour doors and adjustable shelves installed in side storage units allow storage of various size items.



Accessory handle is ergonomically designed to easily maneuver a cart.



Removable drawer totes allow for replenishment system.



Drawers are easily repositioned without tools.



Full extension drawers provide complete access to contents.



Drawer dividers are available to organize your supplies for easy access.



Color-coded drawer pulls are available in an array of choices to fit any system or decor.



Clear doors provide visual access while protecting contents from environment.



Full extension shelves maximize storage capacity.



Polymer shelves are easy to clean and reposition.



Lab Solutions

We put space to work.™

High-Performance Liquid Chromatography (HPLC) Carts

- HPLC carts contribute to greater benchtop productivity.
- Mobilize and stack HPLC equipment on carts to maximize valuable lab space.
- Avoid crowding valuable benchtop space with High Performance Liquid Chromatography (HPLC) or other analytical equipment.



Lab Storage Cabinet

- MetroBasix Plus™ carts are made lighter than typical all-steel carts by utilizing aluminum drawers and polymer components.
- Lighter weight carts are easier to push, and reduce back strain.
- Full-extension drawers and a full array of accessories put equipment and supplies where needed for convenient access.

Lab Animal Research (LAR) Feed Carts

- LAR Feed Carts are designed to store and transport animal feed.
- Stainless Steel/Polymer finish provides superior corrosion resistance, while compact footprint makes it easy to maneuver in and around tight lab spaces.



Polymer Feed Cart



LAR Feed Cart (one-tote capacity)



LAR Feed Cart (two-tote capacity)

Mobile Desk

- Mobile Desk can be used for instrumentation storage or can be combined with accessories to provide a functional lab work surface.
- Accessorize desk with power strip, slide-out keyboard, and flat monitor mounting bar.
- Four locking 5" (127mm) polyurethane casters included for maximum stability.



*MICROBAN® and the MICROBAN® symbol are registered trademarks of the Microban Products Company, Huntersville, NC.



Deep Ledge Lab Dolly

- The Deep Ledge series has shelves with built-in Microban® antimicrobial product protection that helps keep shelves cleaner between cleanings.*
- Microban® inhibits the growth of bacteria, mold and mildew that cause odors and stains on the shelf surface.
- Choose from a wide selection of casters.



Chemical Cart

- Solid shelves contain unwanted spills.
- Stackable perimeter ledges retain chemicals, acid and other solution containers for safe transport.
- Solid shelf mats lift off shelf frame for easy cleaning.
- 5" (127mm) polyurethane casters provide smooth ride.

Lab Security Cart

- Provides secure storage for animal cage, lab instrument or hazardous chemical transport.
- Solid stainless steel shelf with raised ship's edge can be used as a work surface and can contain unwanted spills.
- Stainless steel finish provides superior corrosion resistance.





Lab Solutions

We put space to work.™

MetroMax i™ Glassware Carts

- Two-basket and four-basket capacity glassware solutions are offered in a space-saving 18" x 36" (457 x 914mm) footprint.
- Solid MetroMax i™ bottom shelf provides spill retention and can be removed from shelf frame for easy cleaning.
- Glassware carts are built, primarily, from MetroMax i™ advanced polymers, providing lifetime corrosion protection.
- Choose from a wide range of accessories, including all-polymer casters, for maximum corrosion resistance and premium performance.



GWB2
(Shown with polymer casters and accessories)



GWB1
(Shown with Metro Tote Kit on bottom shelf and casters)

Deep Ledge Utility Cart

- Specially designed with a 2¾" (70mm) deep ledge to contain product and spills.
- Easy-to-position center shelf option adjusts at 1" (25mm) increments.
- Polymer shelves are easy to clean and corrosion proof.
- 2-shelf and 3-shelf models are available in five colors including: Gray, Berry, Blue, Black and Microban Blue.
- Choose from a wide selection of styles, sizes & finishes.



LC3P2030
(Shown with stainless casters)



MW Carts

- The most efficient way to create mobile space.
- Ergonomically-designed for low-effort transport.
- Precise handling you need to maneuver in close quarters.



MW100



MW600

Metro® High-Density Active Aisle Storage Systems

When adding space isn't an option, the answer is to make your existing space more efficient. Combine movable aisles and stationary end units — utilizing all available space.

Eliminate the need for costly facility expansion with Metro Top-Track™ and HD qwikTrak™ storage systems.

Top-Track™ High-Density Storage System

- Overhead track system compensates for uneven floors and makes access easy, with no underfoot tracks to stumble over or trap dirt.
- Mobile and stationary units attach to overhead tracks to increase storage capacity by as much as 50%!



Top-Track High-Density Storage System



qwikTRAK High-Density Storage System

qwikTRAK™ High-Density Storage System

- The active aisle allows easy access to stored products and can increase storage capacity by up to 50%.
- The guiding track is positioned on the floor to provide a smooth and level surface for mobile units. The end stationary units anchor the system and the guiding track to the floor.



Lab Solutions

We put space to work.™

MetroMax i™ Lab Worktables

- Advanced polymer construction provides excellent corrosion-resistance performance for the most corrosive lab environments.
- Table features smooth surfaces that are easy to clean. Mobile units can be easily moved to clean behind table area.
- Available top materials include Type 304 stainless and TRESPA phenolic resin (black or gray).
- Choose from a wide range of available accessories and caster options to customize table for a specific application.



LTM30XS
(Shown with casters)



LTM30XUS
(Shown with accessory wire shelf and casters)



LTM60XUPG
(Shown with accessories and casters)



LTM60XPG
(Shown with backplash, accessories and casters)



LTM60XUPG
(Shown with accessories, casters and StarSys Cart)

Stainless Lab WorkTables

- Stainless steel construction throughout provides corrosion-proof performance.
- Table features smooth surfaces that are easy to clean. Mobile units can be easily moved to clean behind table area.
- Available top materials include Type 304 stainless and TRESPA phenolic resin (black or gray).
- Choose from a wide range of accessories and caster options to customize table.



LTSM30IS
(Shown with casters)



LTS30US
(Shown with accessory stainless wire shelf)



LTS30US
(Shown with accessory wire shelf)



LTSM60UIS
(Shown with accessories and casters)



LTSM60UPG
(Shown with accessories, casters, backplash accessory, and Starsys™ cart)

ALL-STAINLESS SOLID SHELVING



Lab Solutions

We put space to work.™

Super Erecta Shelf® All-Stainless Solid Shelving

- Solid shelving is available in four widths and six lengths.
- All-stainless, 18-gauge steel construction with 1/8" (3mm) ship's edge detail helps contain spills.
- All-stainless design, including stainless cast corners, can be used in cart wash and autoclave environments.
- New accessories include high-temperature autoclave casters and autoclave cart covers (opposite page).



All stainless solid shelf with stainless corners



Stationary Unit



Mobile Unit



4" (101mm) Ledges



Shelf Dividers

Autoclavable Cage Racks

- Preconfigured, autoclavable cage racks available in two footprints — 18"x60" (457x1524mm) and 24"x60" (610x1524mm).
- Units are 69" (1753mm) high, including casters. Casters must be ordered separately.
- Carts come standard with swaged posts and aluminum split sleeves.



5MHTP & 5MHTPB
Hi-temp phenolic
autoclave casters



5MHTN & 5MHTNB
Hi-temp nylon
autoclave casters



LC5S2460
(casters ordered separately)

Autoclavable Lab Carts

- Preconfigured, autoclavable Lab carts are available in two footprints — 18"x24" (457x610mm) and 24"x36" (610x914mm).
- Choose between 2- and 3-shelf models
- Units are 39" (991mm) high, including casters. Casters must be ordered separately.
- Carts come standard with swaged posts and aluminum split sleeves.



LC2S2436
(casters ordered separately)



LC2S1824
(casters ordered separately)



Lab Solutions

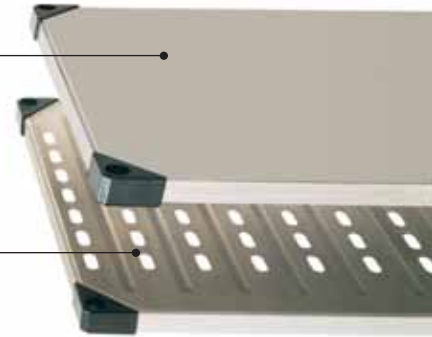
We put space to work.™

Super Erecta® Solid Shelving

- Perfect for applications involving spillage or contamination.
- Shelf design features a 1/8" (3.2mm) raised "ship's edge" on all four sides to contain spills.
- Sturdy aluminum corner castings firmly secure shelf to posts using standard Super Erecta split sleeves (provided).
- Embossed or louvered/embossed shelf styles allow air circulation.
- Available in 18 gauge stainless steel (Type 304) or galvanized materials.

Flat

Louvered/
Embossed



Super Adjustable Super Erecta®

- The easiest to adjust wire shelving system ever.
- No tool adjustment — lift to release, adjust shelf.
- No wasted space — shelf adjusts at 1" (25mm) increments.
- No wasted time — no tool assembly.



MetroMax i™ Shelving

- The Storage System built to last a lifetime.
- Advanced Polymer design provides a lifetime of corrosion resistance.
- Polymer mats feature Microban® antimicrobial product protection molded into the shelf mats to minimize bacterial growth.



Security Trucks

Mobile Security Unit with qwikSLOT™ Shelves:

- Protects valuable materials and sensitive items from loss or pilferage.
- Ready View of Contents: Heavy-gauge open wire construction keeps contents visible at all times, making it easy to check inventory.
- Patented, Ergonomic, 1/4-Turn Door Handle: Makes opening and closing the unit easier than conventional security unit designs.
- Double Door: Each door opens 270 degrees and can be secured along the sides of the unit.
- Shipped Knocked-Down: Saves on freight costs. Easily assembled.



MetroMax Q® Shelving

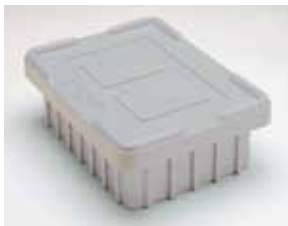
- The power to change is at your fingertips.
- Quick to Adjust — Patented corner release makes shelf repositioning easy.
- Quick to Clean — Removable polymer mats are dishwasher safe.
- Corrosion Proof Polymer Mats feature Microban® antimicrobial product protection molded into the shelf mats to minimize bacterial growth.

WWW.METRO.COM/LABSOLUTIONS



Metro's Tote Box Line offers safe and efficient storage of items in bulk, or in compartmentalized fashion with the use of optional dividers and covers. Ideal for spill containment applications.

- Can be stored and transported on a variety of standard Metro products (see APT cart below).
- Manufactured from polypropylene base resins.
- Available in natural gray (NAT) compound.
- Injection molded for longer life and more uniform wall thickness.
- Impact resistant, durable, and excellent chemical resistance rating.



APT Cart with Totes



Super Erecta® with Stackable Bins — essential for small parts storage



Enclosed Starsys™ — Compact system designed for efficient use of storage

Metro® Super Erecta® Stainless Open-Wire Shelving:

- The original wire storage and handling system has become the standard in the cleanroom industry.
- Manufactured from electro-polished, Type 304 stainless steel.
- Super Erecta® open-wire design facilitates maximum laminar airflow.



Super Erecta® Shelving



Upright Garment Rack



Perf Top Table



Gowning Bench



Wall Mount Garment Rack

Contact your Metro representative for more information on Metro's cleanroom product solutions.

metro.com/labsolutions



Lab Solutions

We put space to work.™

InterMetro Industries Corporation
651 North Washington Street, Wilkes-Barre, PA 18705
570-825-2741 · 1-800-992-1776



© 2010 InterMetro Industries Corporation
Starsys is a Trademark of InterMetro Industries Corporation.

L04-100
Rev. 4/10



EMERSON. CONSIDER IT SOLVED.™