

GeIDoc-It™

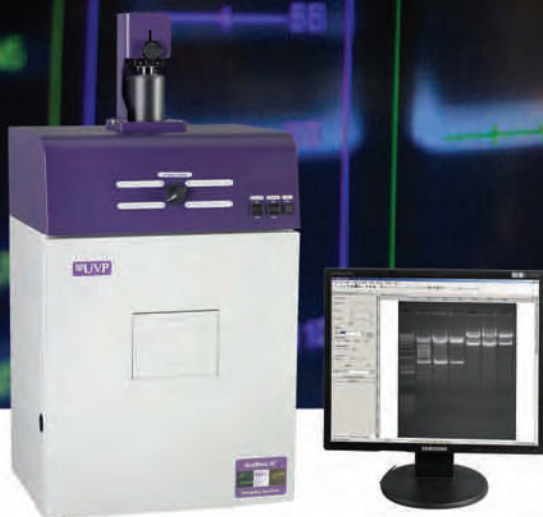
Gel Imaging Systems

Advanced Gel Documentation and Analysis for Genomics and Proteomics

- Industry Leading 2 Megapixel, Scientific Grade CCD Camera for High Resolution Images
- Imagers Designed for Image Capture, Documentation and Analysis
- UV and White Light Enable Multiple Imaging Applications
- GeIDoc-It TS with Integrated Computer and 15" Color Touch Screen for Fast, Easy Image Capture
- Compact Darkroom Footprint Minimizes Lab Bench Requirements
- Network Connectivity for File Transfer



GeIDoc-It TS
Imaging System



GeIDoc-It
Imaging System



Anything You Can Imagine, UVP Can Image!
Document • Print • Publish • Analyze

GelDoc-It™ Gel Imaging Systems

Advanced, modular designs for superior fluorescent and colorimetric gel imaging and analysis!

High resolution 2 megapixel, scientific grade CCD GelCam 310 camera and motorized lens (pictured) or manual zoom lens

Easy turn four position filter wheel

White light sources include epi and optional **LED** white light illuminator for Coomassie Blue and Silver stains

Unique gel viewer window blocks UV while allowing visualization of samples without opening the door

Small darkroom footprint minimizes lab bench requirements

Access port for connecting to the external **BioLite** (optional) high intensity multispectral light source

GelDoc-It Imager
Dedicated Design for Rapid Gel Imaging and Analysis

Ultraviolet light sources includes transillumination or optional epi UV modules for exciting UV fluorophores

Computer required for the GelDoc-It System (order separately)

Thermal printer for archive quality prints (order separately)



VisionWorks®LS Software allows image acquisition, enhancement, documentation, printing, publishing and analysis of gels, blots, plates and colonies¹



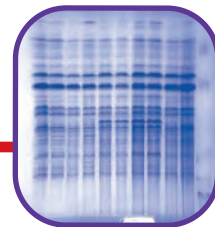
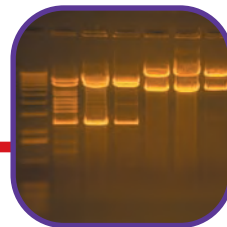
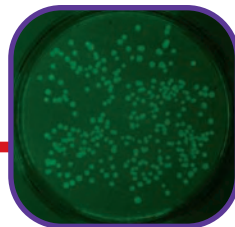
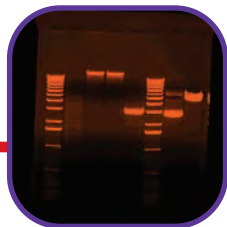
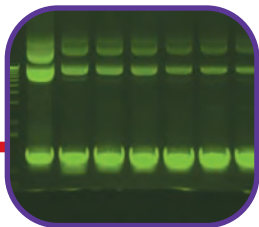
Mounted UV modules (optional) with external darkroom control enables epi UV illumination designed for a clip on UV to 480nm converter (optional)

All GelDoc-It systems feature a **roll-out tray for the transilluminator**; Select from a variety unique Benchtop Transilluminators and FirstLight Transilluminator with uniform UV illumination; several filter sizes and wavelengths are available

Benefits of the GelDoc-It and GelDoc-It TS Systems

- Industry leading **2 megapixel** scientific grade CCD GelCam 310 camera for capturing superior gel images
- Quickly generate reproducible, consistent results with the user-friendly **VisionWorks software** interface
- **Modular design** allows addition of UV modules and a white light illuminator for multiple imaging applications
- GelDoc-It TS has an easy access **single filter tray** located under the camera; GelDoc-It has a **four position filter wheel**
- Systems include **Ethidium Bromide (EtBr) filter**
- **Light tight darkroom** provides optimum conditions for fluorescent and colorimetric imaging



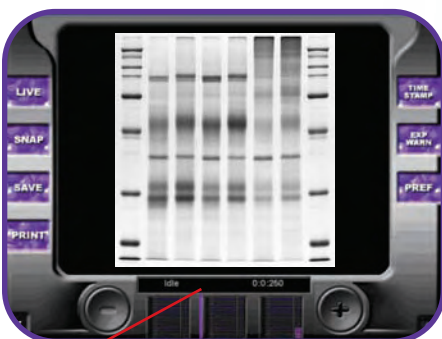


GelDoc-It TS Imager

Compact Stand-Alone Design with Touch Screen Technology

Save images to the internal hard drive, **USB thumb drive** or connect to a network for transferring images

Unique gel viewer window blocks UV while allowing visualization of samples without opening the door



TS Software interface. Touching the screen with a finger or **stylus pen (included)** enables easy control of the software imaging acquisition (and optional analysis) functions.



High resolution 2 megapixel, scientific grade CCD GelCam 310 camera with **motorized or manual lens**

15" color touch screen technology for selecting system functions

Single filter tray is located under the camera for easy access

Darkroom power controls are conveniently located

White light sources include epi and optional **LED** white light illuminator for Coomassie Blue and Silver stains

Ultraviolet light sources includes transillumination or optional epi UV modules for exciting UV fluorophors

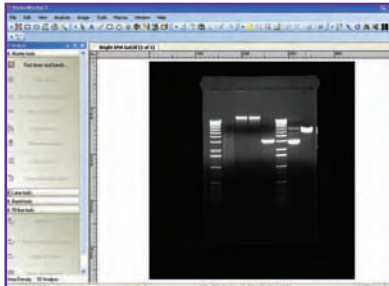
The **built-in computer** allows the addition of a keyboard, mouse and VisionWorksLS analysis software to create a complete **networkable stand-alone system**

GelDoc-It TS Software

The modular design of the GelDoc-It TS enables the system to be used with the exclusive TS software and/or the VisionWorksLS Software.

TS Software is loaded on the GelDoc-It TS with manual lens. The software enables users to easily control the image capture, live preview and save functions. Print images with the optional thermal printer.

VisionWorks®LS Acquisition Software is loaded on the GelDoc-It TS with the motorized lens to enable image capture, enhancement and reporting capabilities. (Analysis software optional.)



GelDoc-It Systems Overview

Component	GelDoc-It	GelDoc-It TS
Camera	GelCam 310	GelCam 310
Zoom Lens	Motorized or Manual	Motorized or Manual
Computer	External/optional	Internal
Monitor	External/optional	Integrated touch screen
Emission Filters	4 position, EtBr included	1 position, EtBr included
White Light	Epi (white light illuminator optional)	Epi (white light illuminator optional)
Transilluminator	Benchtop (Single/3UV/2UV) or FirstLight	Benchtop (Single/3UV/2UV) or FirstLight
Software	VisionWorksLS	TS Interface and/or VisionWorksLS

Applications

A wide range of dyes and fluorophors that can be used with the GelDoc-It Systems include:

Ethidium Bromide | SYBR® Green | SYBR® Gold
 SYBR® Safe | GelStar® | SYPRO® Red | SYPRO® Ruby
 GelRed™ | GelGreen | Coomassie Blue | Silver Stained
 Deep Purple™ | GFP | Quantum Dots

Ordering Information

¹ System configurations may vary by country. Contact a UVP representative or dealer to discuss configuring a system.

System Configurations

GelDoc-It 310 Imaging System

GelDoc-It TS 310 Imaging System

System Components

- GelCam 310 Camera
- Darkroom with UV blocking gel viewing window
- Overhead light: white light (UV optional)
- UV Transilluminator (25x26cm, 21x26cm or 20x20cm)
Single UV, 3UV, 2UV, FirstLight models available
- Emission filter: Ethidium Bromide (EtBr); others available
- Manual or motorized zoom lens
- GelDoc-It includes VisionWorksLS
- GelDoc-It TS includes TS Software and/or VisionWorksLS
- 100-115V or 230V

Camera Specifications

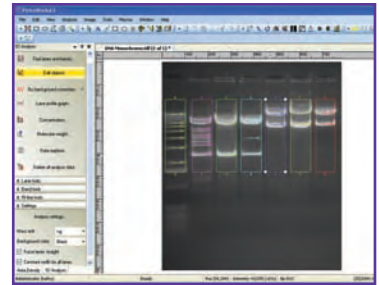
Camera:	GelCam 310
CCD Bit Depth:	12 bit
File Bit Depth (A/D):	16 bit
Grayscale Range:	65,536
Pixel Resolution:	1600 x 1200
Megapixels:	2.0
Captured Image Size (TIF):	3.7mb @ 16-bit
PC Interface Connection:	USB 2.0
Lens (Manual or Motorized):	f/1.2 12.5-75mm zoom lens

GelDoc-It and GelDoc-It TS are CSA and CE approved.

VisionWorks® Software

Systems configured with VisionWorksLS software have extensive tools to facilitate capture and analysis of gels.

- Easy to use software plugins allow selection of image capture and optics settings
- Variety of image enhancement tools including process filters, annotation, background correction and more
- Powerful analysis capabilities include 1D lane analysis, protein quantitation, colony counting, molecular weights, GFP expression and more
- User defined macros and templates for repeat experiments and analysis
- Detailed and user configured reports and export to Excel
- Single user and network versions available
- Support for CFR 21 Part 11 compliance
- Compatible with Win XP



Optional Accessories

Epi UV Modules

UVL-21 (365nm) Epi UV Modules (2 required)
 UVG-21 (254nm) Epi UV Modules (2 required)
 UV to 480nm Converter (Clip On) for UV Modules

LED Uniform White Light Illuminator 11Wx11D in. (28x28 cm)

Converter Plates (21x26cm or 25x26cm sizes):

302nm UV to White Light
 302nm UV to 365nm
 302nm UV to 480nm

Gel Tools:

Gel-Cutter: easy cutting and removal of gel materials
Gel-Scooper: for transfer of gels
Gel-Trays: UV transmitting for moving gels onto the transilluminator
Gel-Ruler: Fluoresce under 365/302nm UV
Step Tablet: Calibrated gradation for comparison of bands and spots

Thermal Printers: Archive quality 256 grayscale prints
 Thermal Paper rolls (standard or glossy)

Emission Filters

BioLite MultiSpectral Source and Excitation Filters



Web Site: www.uvp.com

UVP, LLC 2066 W. 11th St., Upland, CA 91786 | Tel: (800) 452-6788
 (909) 946-3197 | Fax: (909) 946-3597 | Email: info@uvp.com
Ultra-Violet Products Ltd. Unit 1, Trinity Hall Farm Estate,
 Nuffield Road, Cambridge CB4 1TG UK | Tel: +44(0)1223-420022
 Fax: +44(0)1223-420561 | Email: uvp@uvp.co.uk

For pricing, quotes and additional information, contact:

FirstLight and VisionWorks are registered trademarks of UVP, LLC. GelDoc-It and BioLite are trademarks of UVP, LLC.
 All other trademarks are recognized as owned by their respective owners.